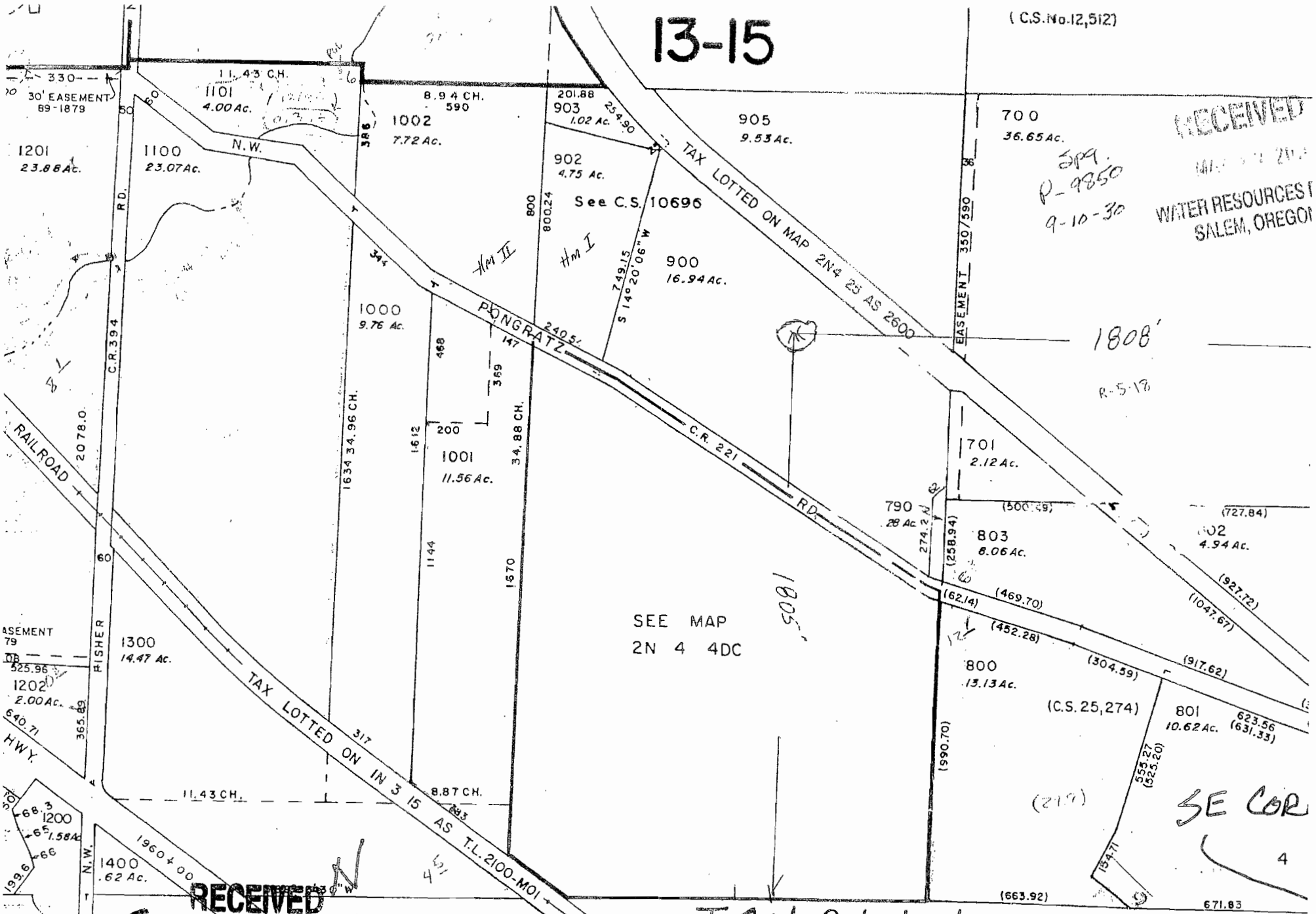


13-15

(C.S.No.12,512)



RECEIVED

SPR.
P-9850
9-10-30

MAY 10 2012
WATER RESOURCES I
SALEM, OREGON

1808'

R-5-18

SEE MAP
2N 4 4DC

1805'

EASEMENT
79
OR
325.96
1202
2.00Ac.
640.71
HWY

1200
66
1584
66
1996
66
N.W.
1400
.62 Ac.
1960 + 00

RECEIVED

MAY 10 2012

WATER RESOURCES DEPT
SALEM, OREGON

SEE MAP
2N 4 9

T 2N R 4W 4 TAX LOT 900
WASHINGTON COUNTY, OR
SCALE 1" = 400' NW 1/4 SE 1/4 Sec 4