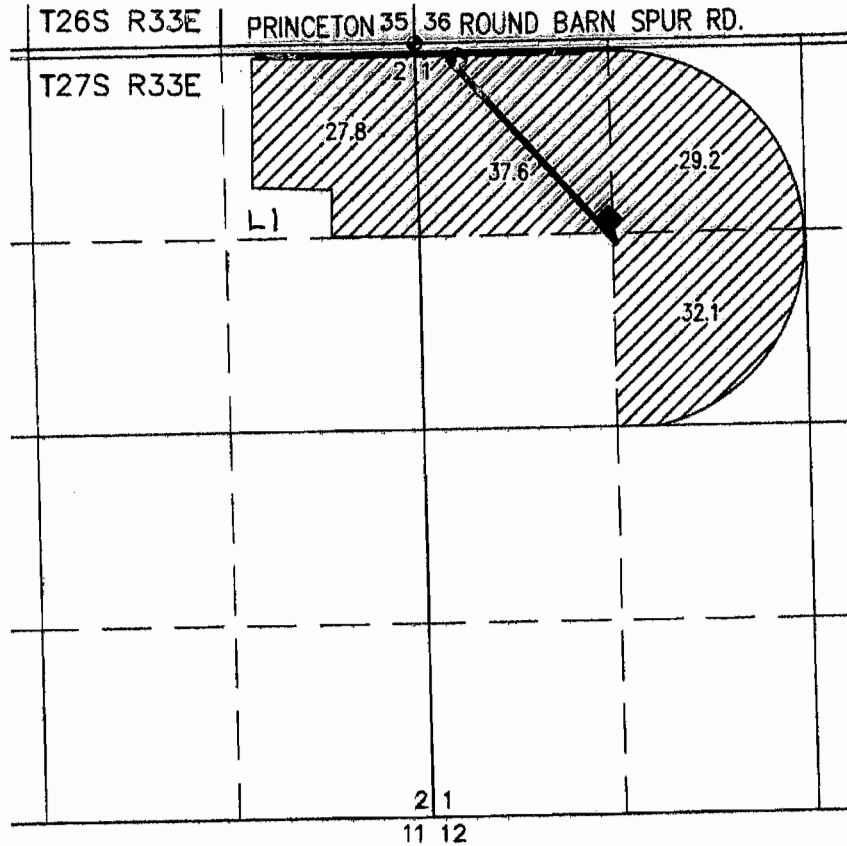


FINAL PROOF MAP

TO CHANGE POINT OF APPROPRIATION FOR T-10321 JAMES & SUE GILMOUR

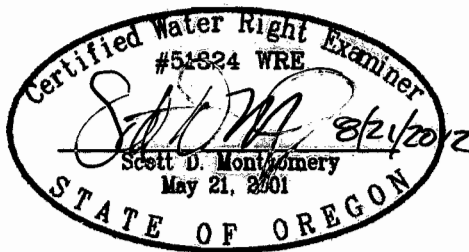
TOWNSHIP 27 SOUTH, RANGE 33 EAST, SECTIONS 1 & 2, W.M.
TAX LOT: 200



RECEIVED BY OWRD

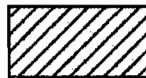
AUG 22 2012

SALEM, OR



RENEWAL DATE: 12/31/2012

THIS MAP IS FOR THE PURPOSE OF LOCATING A WATER RIGHT ONLY AND HAS NO INTENT TO PROVIDE LEGAL DIMENSIONS OR THE LOCATION OF PROPERTY LINES



126.7 ACRES WATER RIGHTS FROM C#82697 (G-8527), AS SHOWN.

◆ 2-1/2" ALUMINUM CAPPED SECTION MONUMENT

— BURIED 6 OR 8 INCH STEEL PIPE

HARN 51070 - WELL 2

● LOCATED IN THE NW 1/4 NW 1/4 SECTION 1, T27S R33E, W.M. AND 70 FEET SOUTH AND 285 FEET EAST FROM THE NW CORNER OF SECTION 1.

◆ **HARN 51069 WELL 3**

● LOCATED IN THE NW 1/4 NW 1/4 SECTION 1, T27S R33E, W.M. AND 1195 FEET SOUTH AND 1291 FEET EAST FROM THE NW CORNER OF SECTION 1.

PREPARED FOR:

JAMES & SUE GILMOUR
30427 STELLMACHER DRIVE
ALBANY, OR 97321

PREPARED BY:



ALL POINTS ENGINEERING AND SURVEYING, INC.
P.O. BOX 767 (CRR) TERREBONNE, OR 97760
(541) 548-5833 www.APEandS.com

added Riv' Lot RCK/10/28/13