

Application for George Gover to change the Place of use

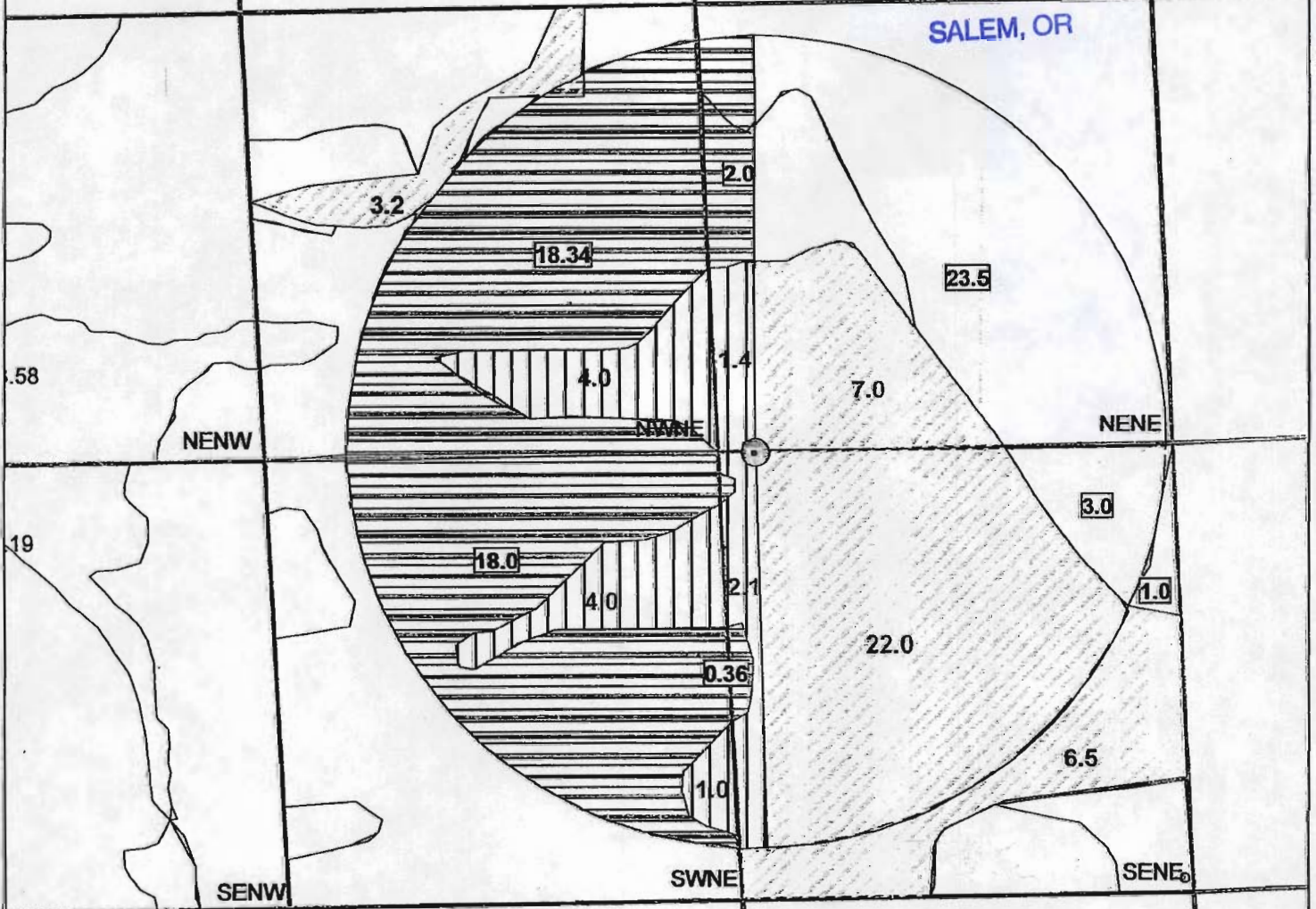
# Certificate 80372 & 67383 & 27737 SUP

## Township 8 S, Range 46 E Sec 20




RECEIVED BY OWRD

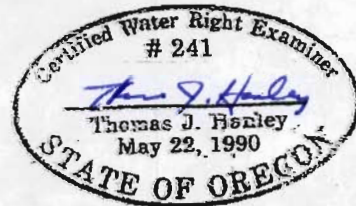
OCT 25 2012

SALEM, OR



**Legend** 1 inch = 500 feet

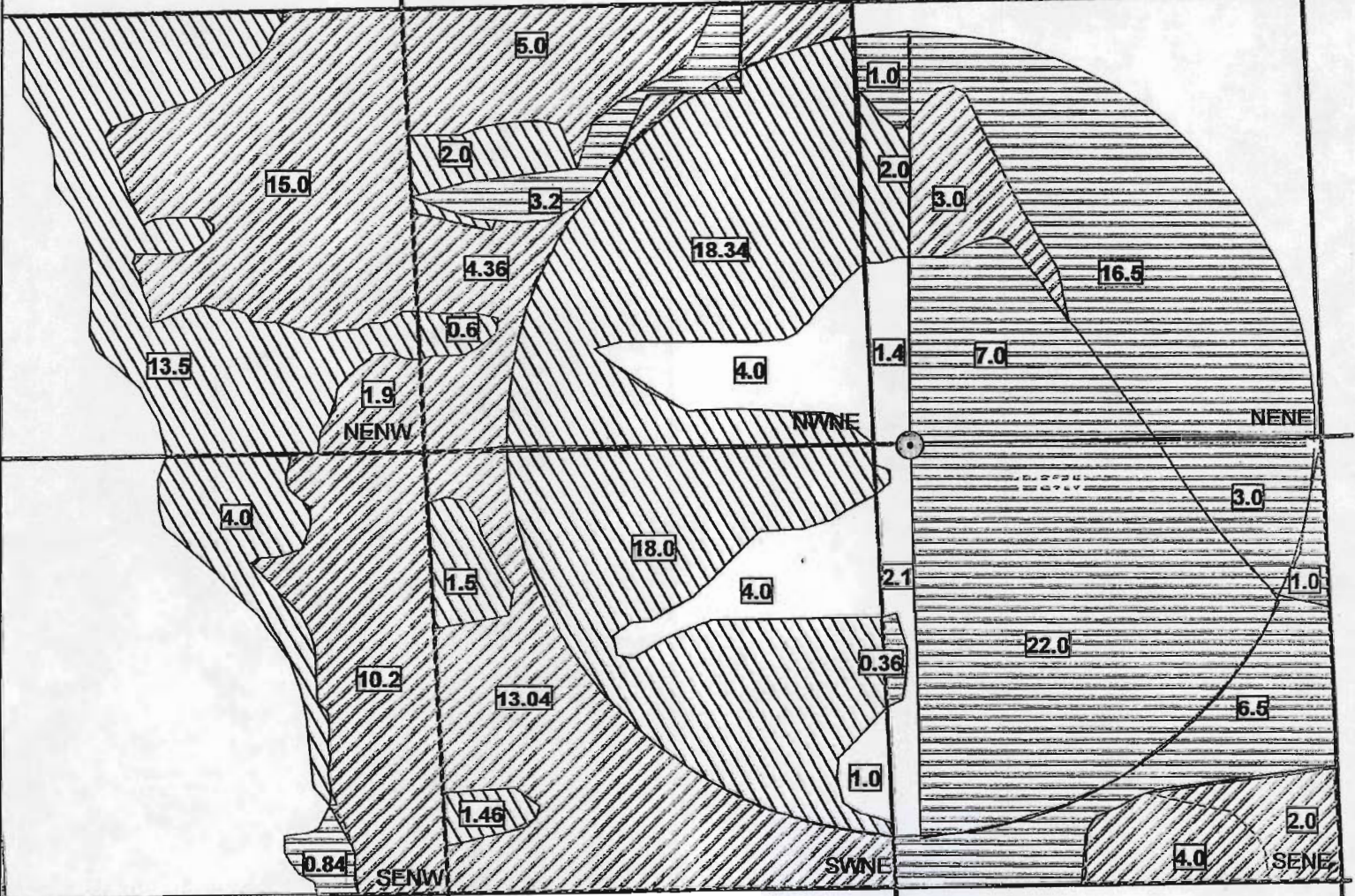
-  80372 67383 27737 "From"
-  80372 67383 27737 Remaining
-  80372 67383 27737 "TO"



This product is for informational purposes and may not have been prepared for, or be suitable for legal, engineering, or surveying purposes. Users of this information should review or consult the primary data and information sources to ascertain the usability of the information.



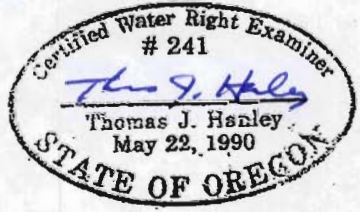
# Certificate 67383 Primary Irrigation Township 8 S, Range 46 E Sec 20




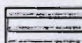
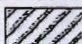
RECEIVED BY OWRD

OCT 25 2012

SALEM, OR



**Legend**  
1 inch = 500 feet

-  67383 (P) "From"
-  67383 (P) "To"
-  67383 (P) "Remaining"

This product is for informational purposes and may not have been prepared for, or be suitable for legal, engineering, or surveying purposes. Users of this information should review or consult the primary data and information sources to ascertain the usability of the information.





Oregon Water Resources Department

725 Summer St NE, Salem, OR 97301

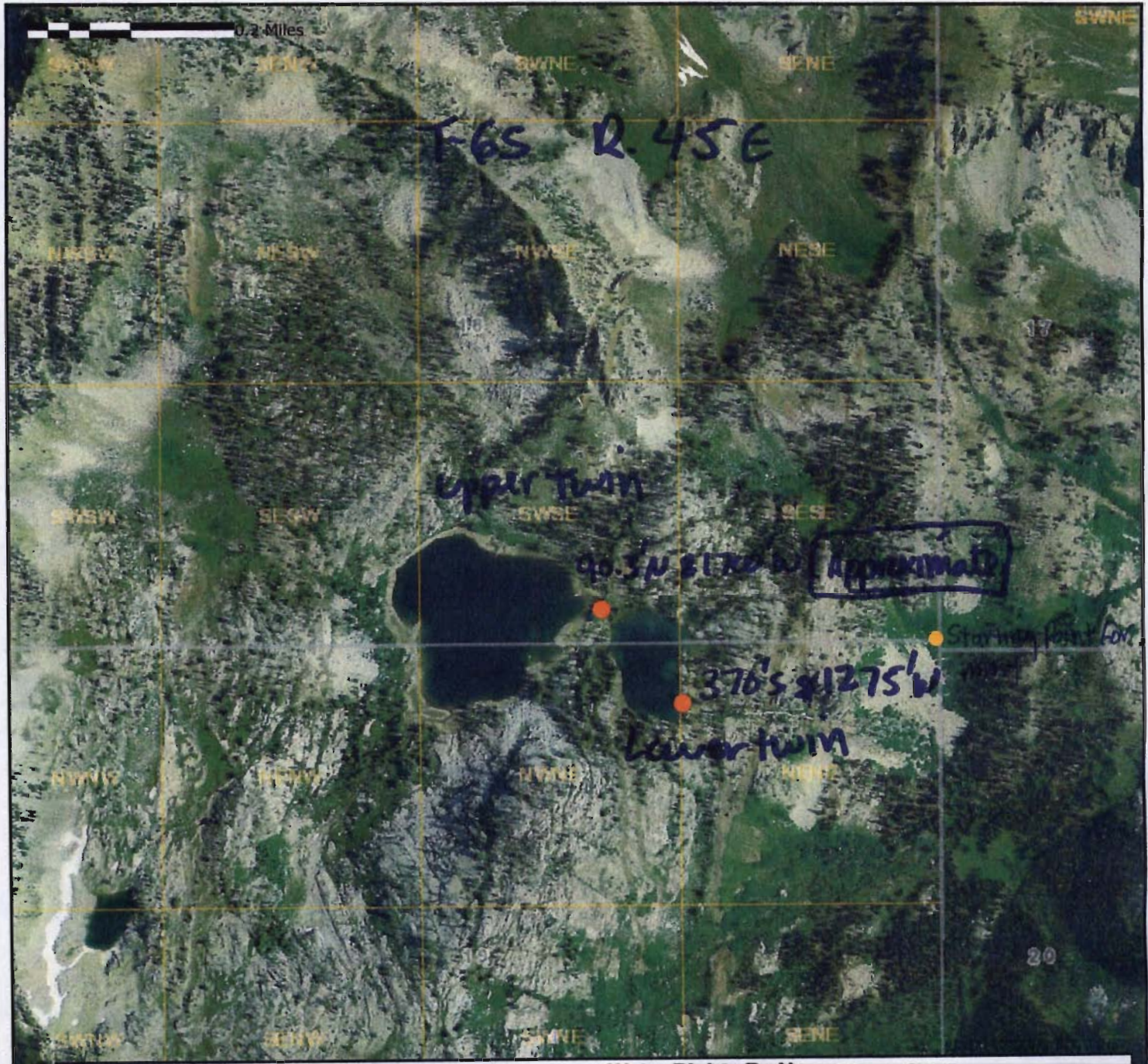
(503)986-0900

1 of 2

Supplemental Map

Oregon Water Rights

Approximate Locations of P.O.D. C-27737



Points of Diversion	Places of Use	Recreation	Miscellaneous	Mining	Municipal
RECEIVED BY OWRD	Storage water	Fish	Agriculture	Power	Points of Diversion
OCT 28 2012	Surface water	Wildlife	Livestock	Commercial	Colors vary with use
	Ground water	Instream	Irrigation	Domestic	

SALEM, OR

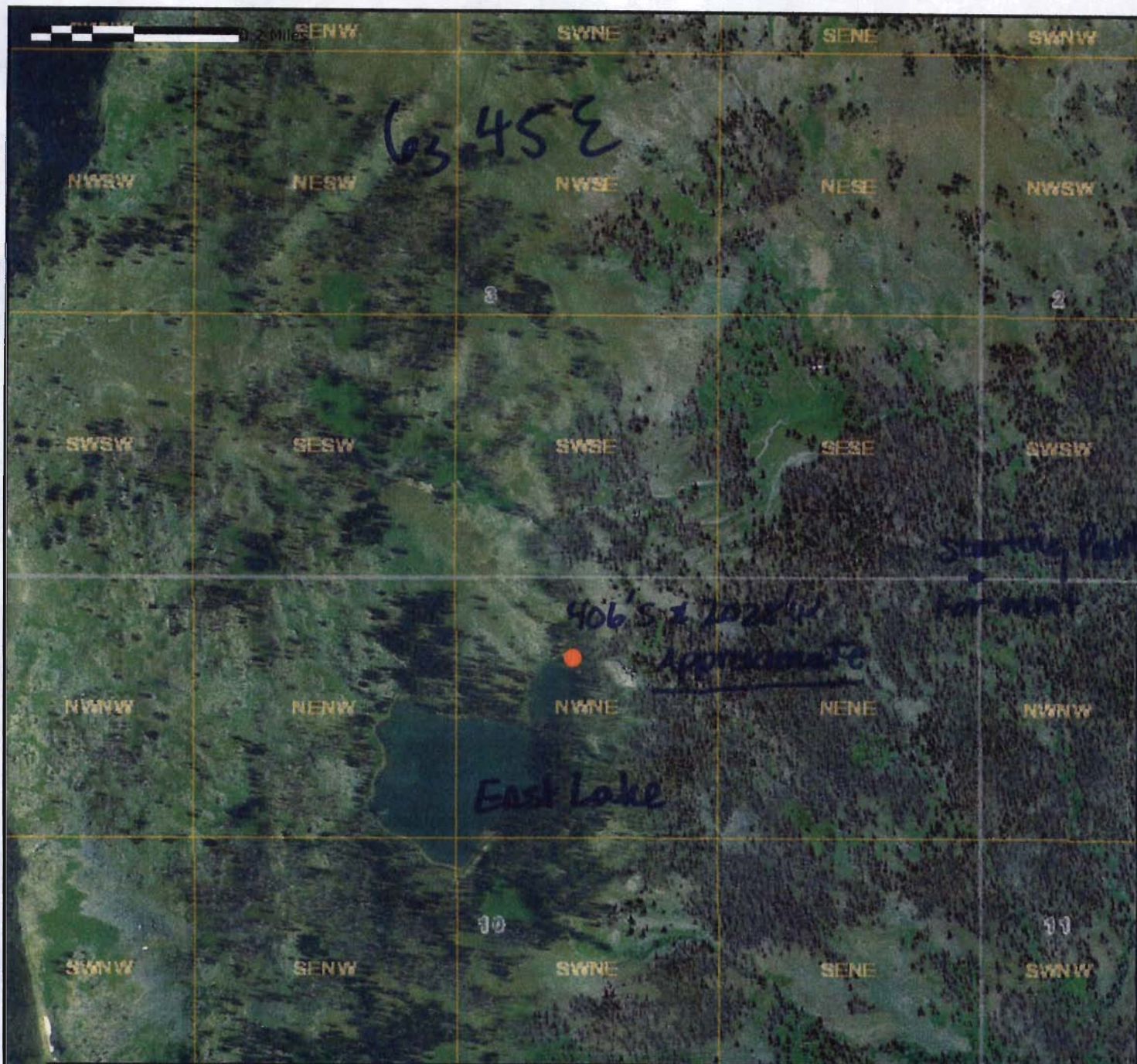




725 Summer St NE, Salem, OR 97301

(503)986-0900

Approximate Locations of P.O.D C-27737



Water Rights By Type		Water Rights By Use (Places of Use)				
Points of Diversion	Places of Use	↑ N	Recreation	Miscellaneous	Mining	Municipal
RECEIVED BY OWRD	Storage water		Fish	Agriculture	Power	Points of Diversion
OCT 25 2012	Surface water	Wildlife	Livestock	Commercial	<i>Colors vary with use</i>	
SALEM, OR	Ground water	Instream	Irrigation	Domestic		