

SECTION 36 T.24S. R.5W. W.M.
DOUGLAS COUNTY

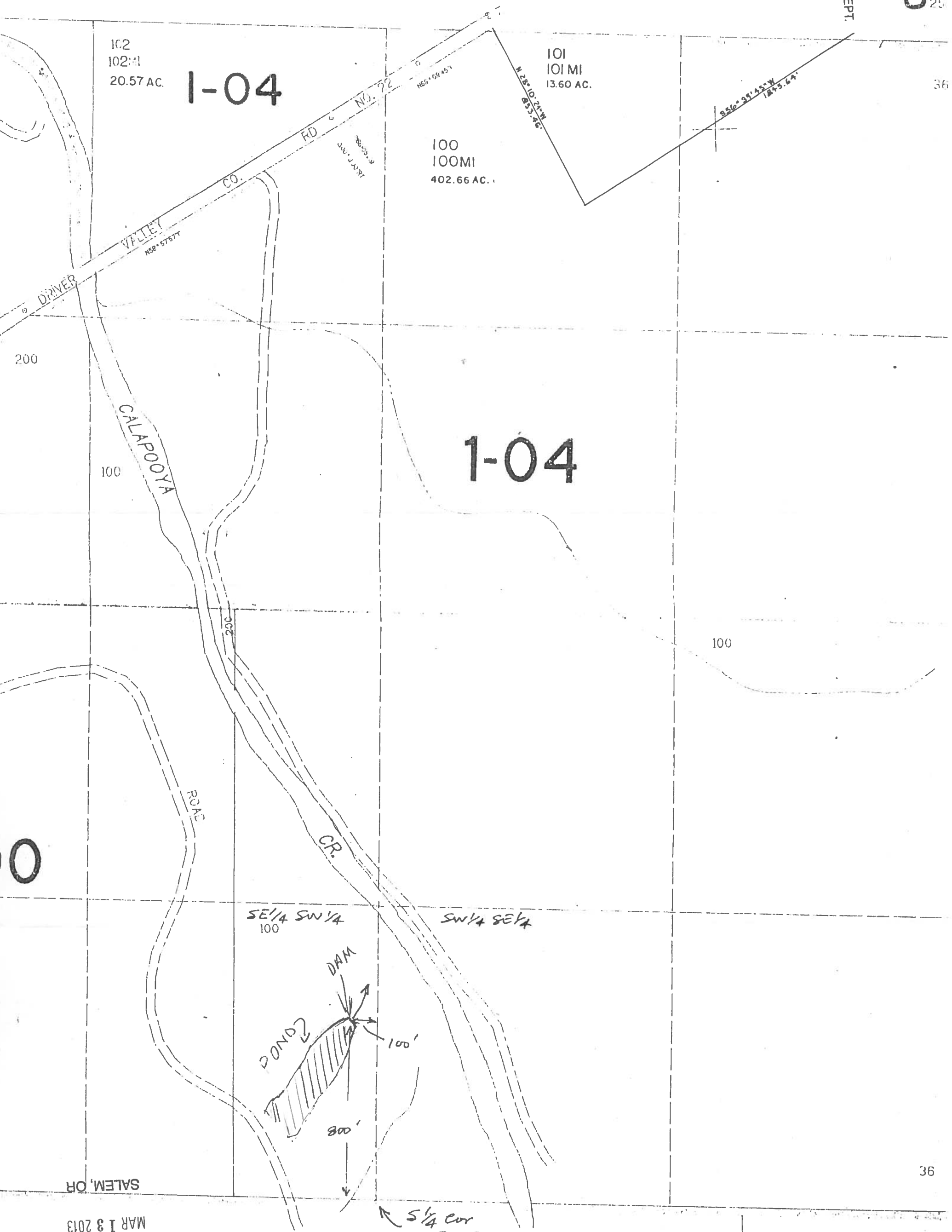
Application No. R-81370
Permit No. 112217

11-400'

SEE MAP 24 5 25

WATER RESOURCES DEPT.
SALEM, OREGON

RECEIVED
AUG - 1 1996



0

SALEM, OR

MAR 13 2013

RECEIVED BY OWRD

SEE MAP 25 5 1

5 1/4 cor
Sec. 36

36

36

1