



RECEIVED

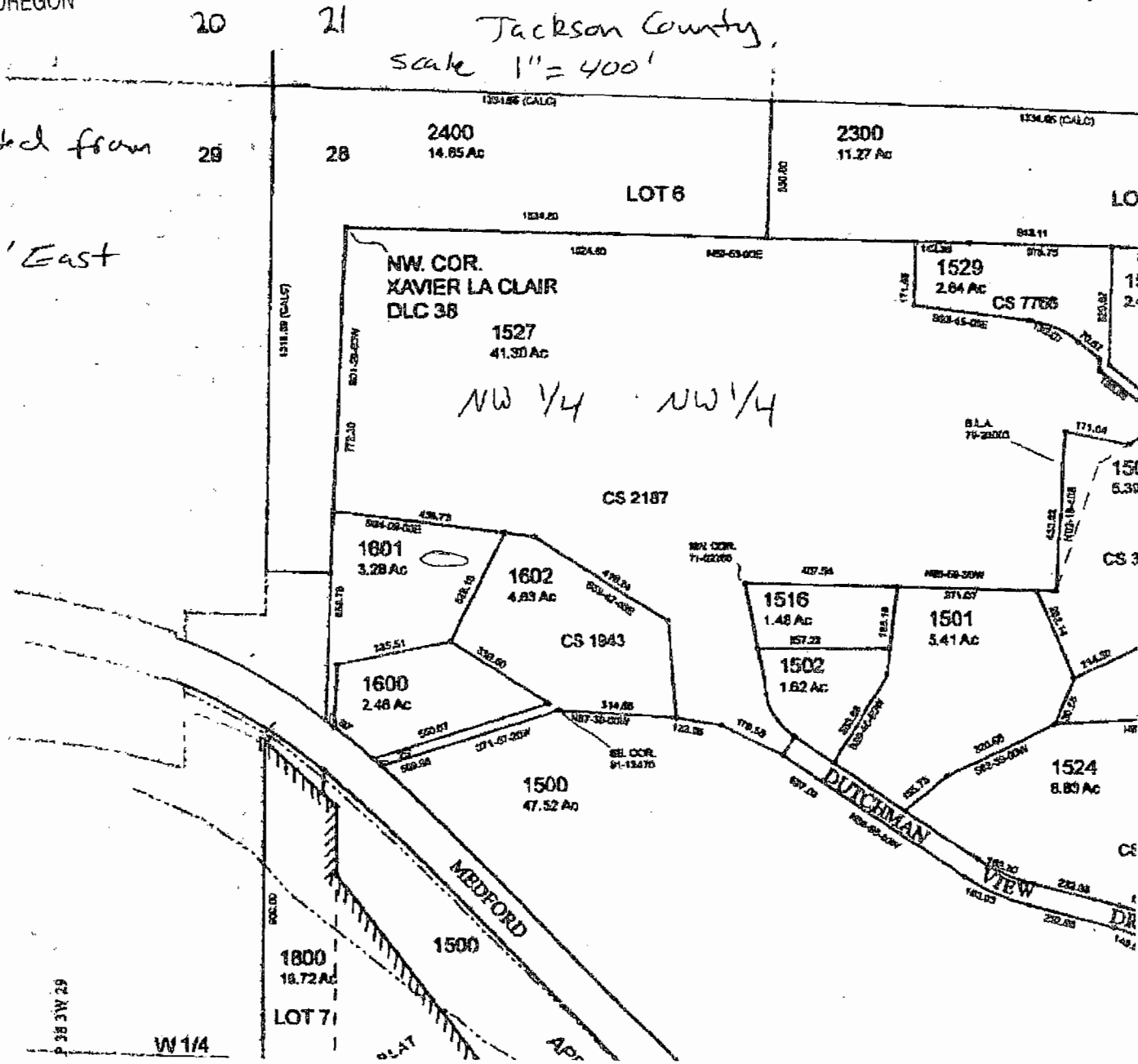
DEC 28 2010

WATER RESOURCES DEPT  
SALEM, OREGON

Section 28 T38S, R3W, W.M.  
Jackson County,  
scale 1" = 400'

Proposed reservoir located from  
NW corner 28

1260' South 450' East  
parcel # 1601



RECEIVED  
APR 03 2008  
WATER RESOURCES DEPT  
SALEM OREGON

Legend  
Reservoir Shape =

App No R 87137