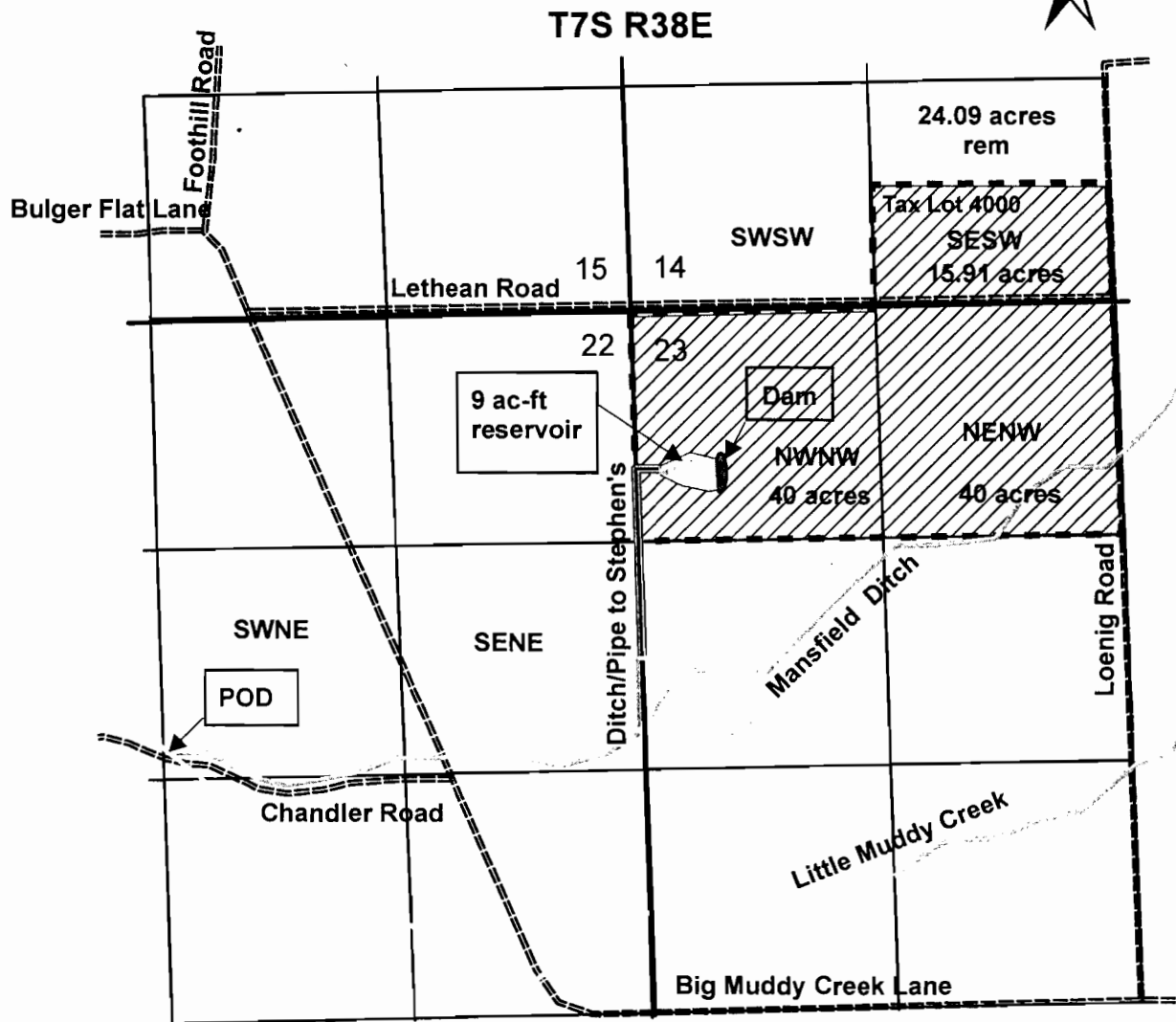


RECEIVED

AUG 3 2011

WATER RESOURCES DEPT
SALEM, OREGON

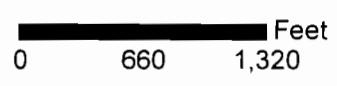
Richard D. Stephens
Stephens Upper Pond
R-87406



POU: 95.91 acres in tax lot 4000
T7S, R38E, Sec 14, 23

POD: Mansfield Ditch POD on Little Muddy Creek is
2470' South and 2540' West from the NE Corner Section 22

Dam Location: 910' South and 650' East from NW Corner, Section 33



LEGEND

- Irrigated acres
- Creek/ Ditch
- Roads
- Pipeline
- Taxlot Boundary