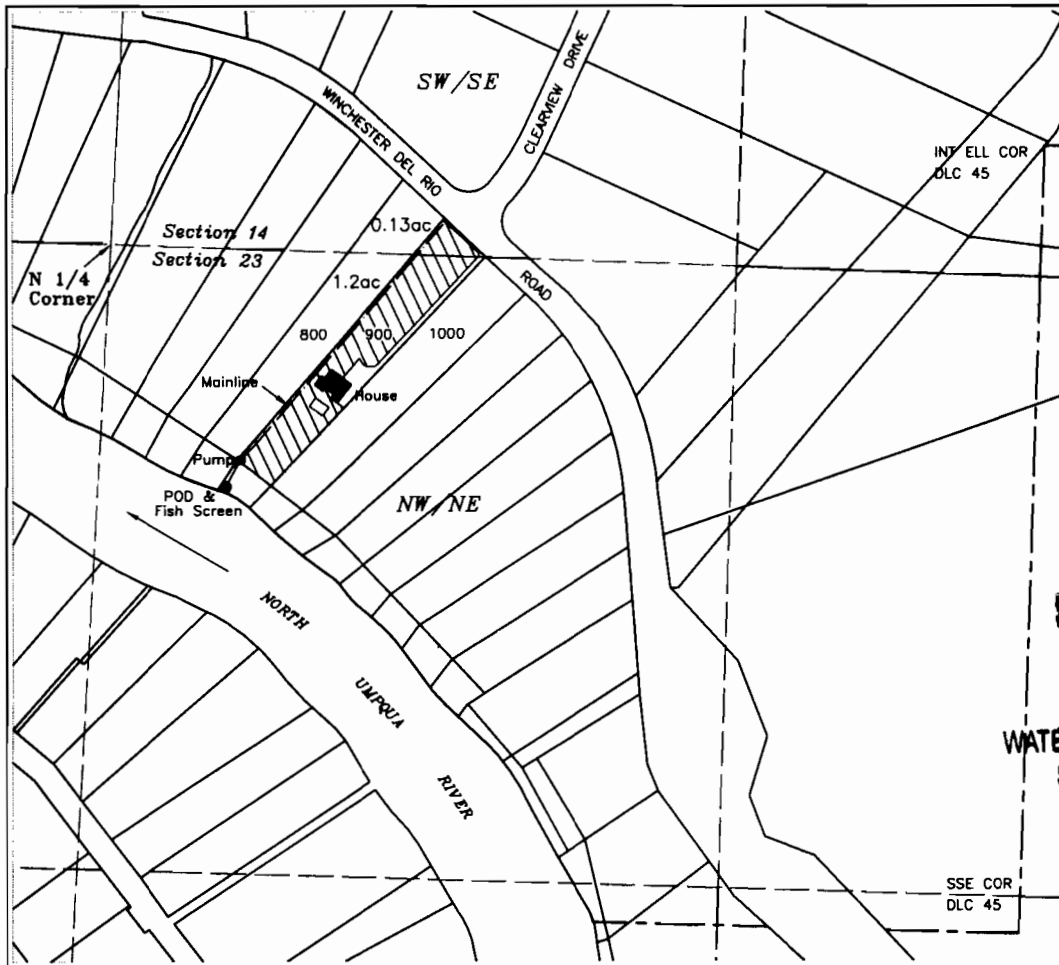


CLAIM OF BENEFICIAL USE

TRANSFER 7683

IN THE NAME OF DAVE RUSSEL

SECTIONS 14 & 23, TOWNSHIP 26 SOUTH RANGE 6 WEST, W.M.
DOUGLAS COUNTY OREGON



POD - DLC 45, NW/NE, Section 23; 500 feet south & 265 feet east from the north 1/4 corner Section 23



Irrigated area 1.33 acres

Scale
1 inch = 400 feet

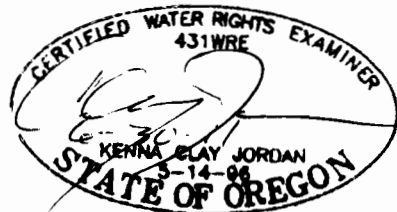


NORTH

Locations per 1/4 1/4 are derived by assumed fit of aerial photo orientation to ground surveys and/or tax assessor maps

For purpose of locating POD Cardinal directions are in reference from point of beginning (N 1/4 COR Section 23) extending along it's boundary lines

This map is not intended to provide legal dimensions or locations of property ownership lines



RECEIVED

DEC 15 2009

WATER RESOURCES DEPT
SALEM, OREGON

JORDAN ENGINEERING
460 JORDAN LANE
ROSEBURG, OR 97471
(541) 673-1931

10/8/2009 n.e.d.