

FINAL PROOF SURVEY AND CLAIM OF BENEFICIAL USE

RECEIVED
DEC 23 2002
WATER RESOURCES DEPT
SPECIAL ORDER

LOCATED IN
NW 1/4, SW 1/4; SW 1/4, SW 1/4 AND SE 1/4, SW 1/4, SECTION 32, T.1N., R.33E., W.M.,
UMATILLA COUNTY, OREGON

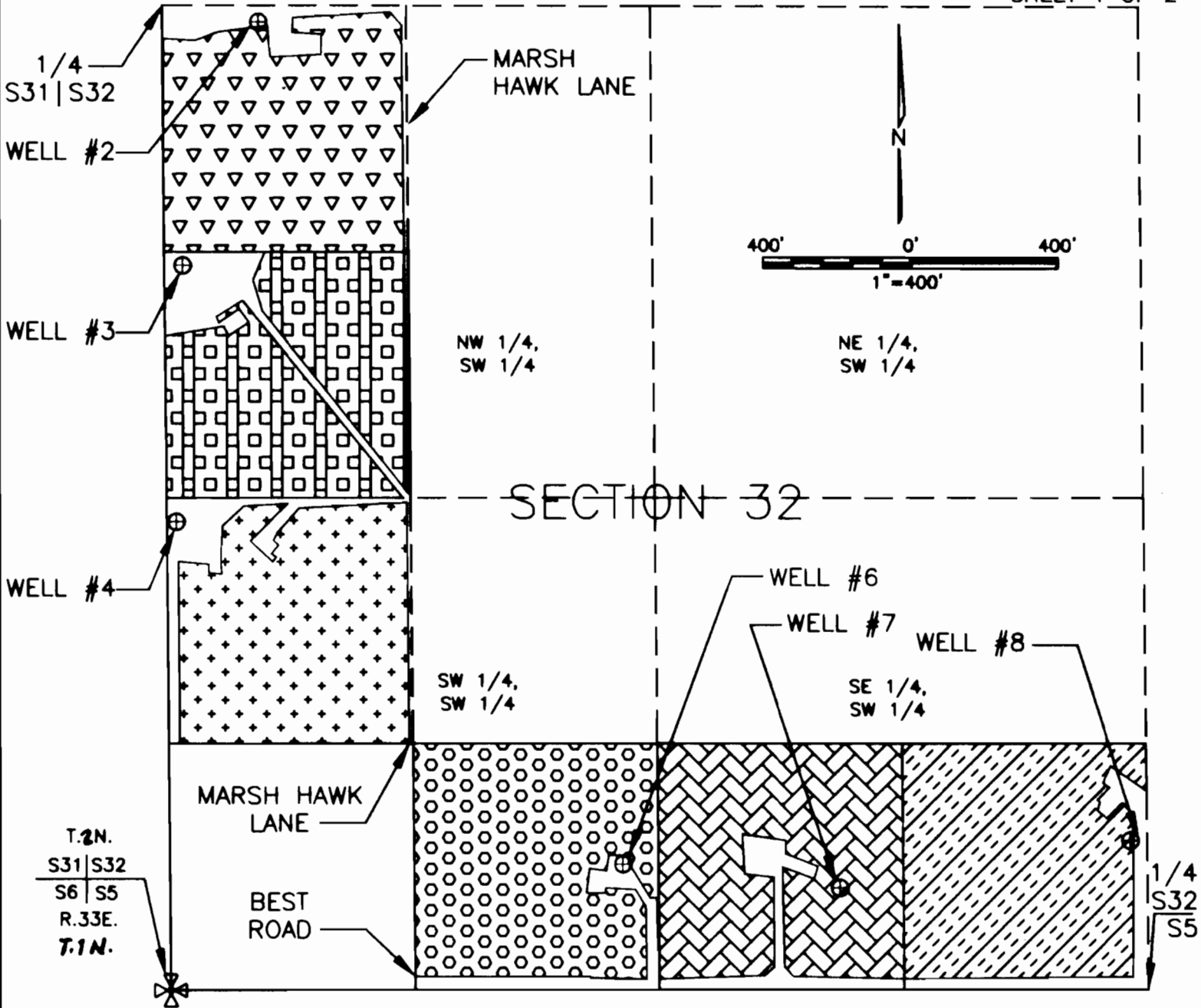
APPLICANTS: DAVID L. AND SANDRA L. UMBARGER

2 N
jme 6/6/13

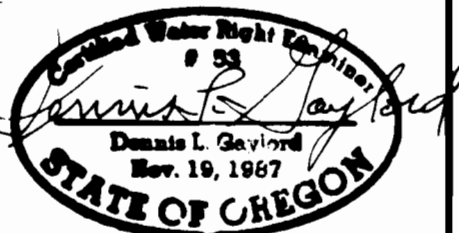
TRANSFER 8373

SPECIAL ORDER VOLUME 54, PAGE 297

SHEET 1 OF 2



THIS MAP IS PREPARED FOR THE EXPRESS PURPOSE TO SHOW WATER APPROPRIATION AND USE. IT IS NOT INTENDED TO SHOW OR LOCATE PROPERTY OWNERSHIP LINES.



DENNIS L. GAYLORD,
CWRE
71614 S.W. LAKE DRIVE
PENDLETON, OR 97801
(541)-276-6260
NOVEMBER, 2002

Renews 6/30/2003

Mill Creek Drafting

FINAL PROOF SURVEY AND CLAIM OF BENEFICIAL USE

RECEIVED
DEC 23 2002
WATER RESOURCES DEPT
SALEM, OREGON

LOCATED IN
NW 1/4, SW 1/4; SW 1/4, SW 1/4 AND SE 1/4, SW 1/4, SECTION 32, T.4N., R.33E., W.M.
UMATILLA COUNTY, OREGON

APPLICANTS: DAVID L. AND SANDRA L. UMBARGER

2 N
Jme 0/6/13


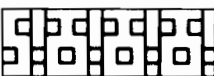

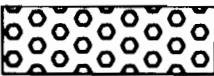

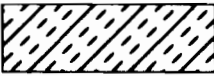
TRANSFER 8373

SPECIAL ORDER VOLUME 54, PAGE 297

SHEET 2 OF 2

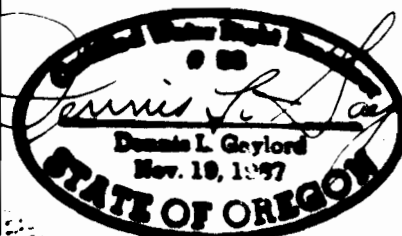
LEGEND

- SECTION LINE
- - - - - 1/16TH LINE
- ⊕ SECTION CORNER
- ⊕ WELL

LEGEND	CORNER TIE	RECEIVING LANDOWNER	TAX LOT NUMBER
 = AREA IRRIGATED FROM WELL #2, 8.95 ACRES. NW 1/4, SW 1/4 SECTION 32.	45' SOUTH & 280' EAST OF WEST 1/4 CORNER OF SECTION 32.	LARRY AND LEE ANN BAARSTAD	11501
 = AREA IRRIGATED FROM WELL #3, 8.52 ACRES. NW 1/4, SW 1/4 SECTION 32.	705' SOUTH & 55' EAST OF WEST 1/4 CORNER OF SECTION 32.	MEL AND JULIE WUNDERLICH	11502
 = AREA IRRIGATED FROM WELL #4, 8.58 ACRES. SW 1/4, SW 1/4 SECTION 32.	1,270' NORTH & 40' EAST OF SOUTHWEST CORNER OF SECTION 32.	DANIEL AND PAMELA DUSO	11503
 = AREA IRRIGATED FROM WELL #6, 9.21 ACRES. SW 1/4, SW 1/4 SECTION 32.	340' NORTH & 1,225' EAST OF SOUTHWEST CORNER OF SECTION 32.	THOMAS AND KAREN DEMANEW	11505
 = AREA IRRIGATED FROM WELL #7, 9.10 ACRES. SE 1/4, SW 1/4 SECTION 32.	275' NORTH & 835' WEST OF SOUTH 1/4 CORNER OF SECTION 32.	MARK LEWIS	11506
 = AREA IRRIGATED FROM WELL #8, 9.01 ACRES. SE 1/4, SW 1/4 SECTION 32.	405' NORTH & 50' WEST OF SOUTH 1/4 CORNER OF SECTION 32.	SUSAN SIMMONS	11507

TOTAL AREA TRANSFERRED: 53.38 ACRES

THIS MAP IS PREPARED FOR THE EXPRESS PURPOSE TO SHOW WATER APPROPRIATION AND USE. IT IS NOT INTENDED TO SHOW OR LOCATE PROPERTY OWNERSHIP LINES.



©

Renews 6/30/2003

DENNIS L. GAYLORD,
CWRE
71614 S.W. LAKE DRIVE
PENDLETON, OR 97801
(541)-276-6260
NOVEMBER, 2002

Mill Creek Drafting