

AUG 26 2013
SALEM, OR

POINTS OF DELIVERY MAP
SW¼, T.14S., R.13E., W.M.
Section 21, Map 14 13 21 CO
Deschutes County, Oregon

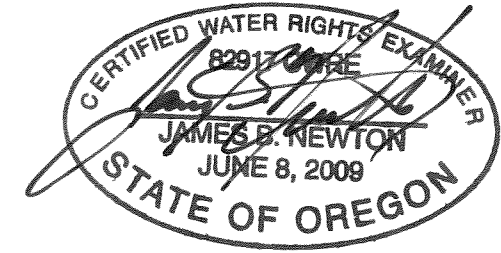
S.W.1/4 SEC.21 T.14S. R.13E. W.M.
DESCHUTES COUNTY

NOTES

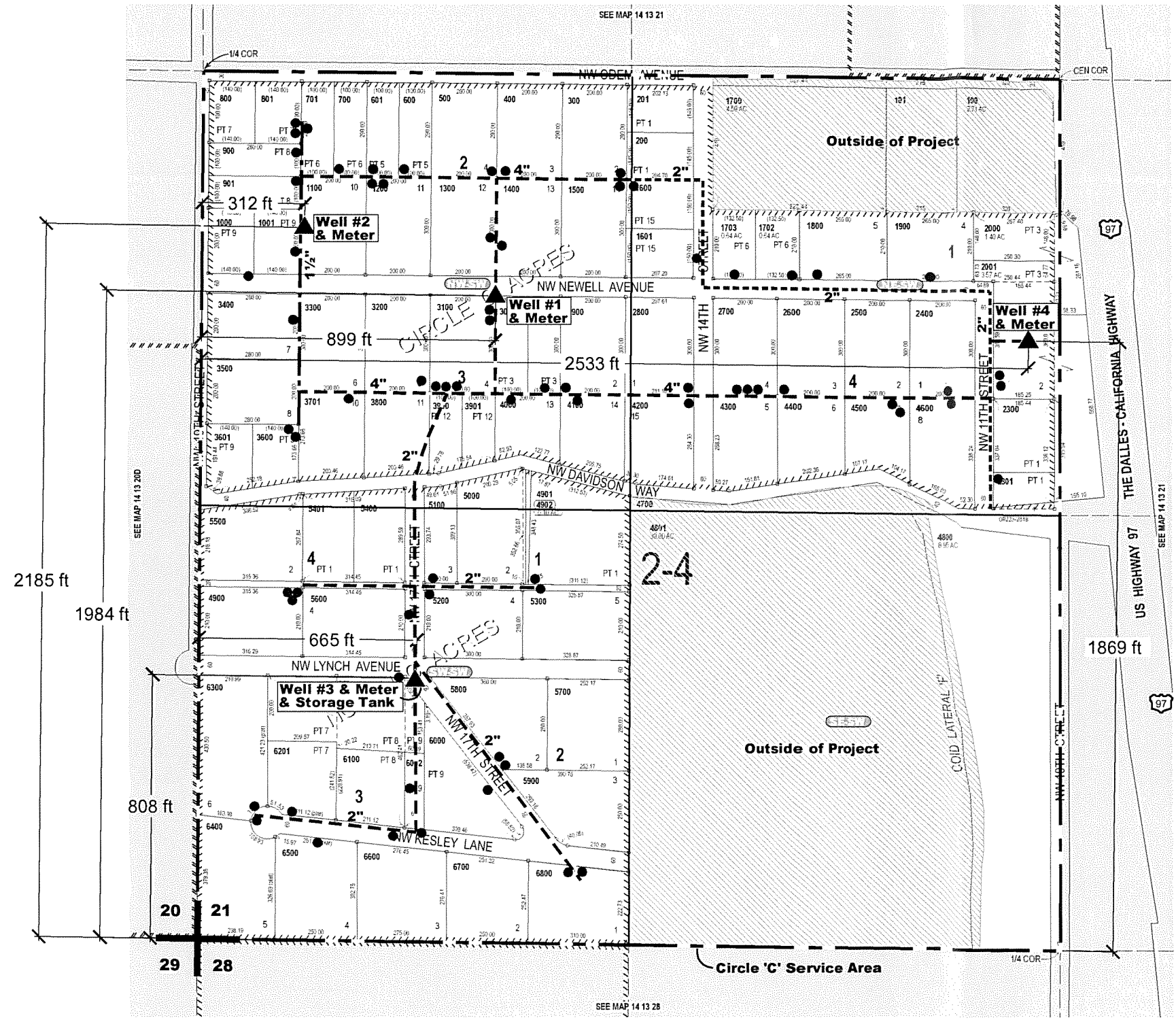
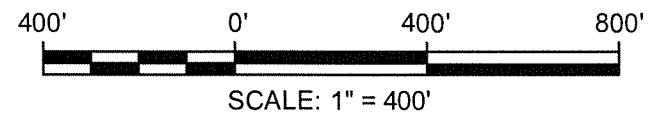
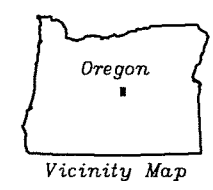
1. This map was prepared for the purpose of identifying the location of water rights only and is not intended to provide legal dimensions or locations of property ownership lines.

LEGEND

- Well ID#
- Well Location
- Location of Delivery Valves (72 Total)
- Approximate Location of Distribution Pipeline
 - 1-½" Pipeline - ABS
 - 2" Pipeline - PVC CL-160
 - 4" Pipeline - PVC CL-160



EXPIRES:
RENEWS: 0/31/2014



Base Map: Deschutes County Assessor Tax Map 14 13 21CO

Points of Delivery Map
Circle 'C' Improvement District
Deschutes County, Oregon



NEWTON CONSULTANTS INC.
Earth, Water and Rock Specialists
Ph: 541 504-9960 Fax: 541 504-9961

DESIGNED BY: J. Newton

DRAWN BY: S. Schenck

DATE: AUGUST 2013

PROJECT NO: 1123-102

FIGURE

3

S.W.1/4 SEC.21 T.14S. R.13E. W.M.
DESCHUTES COUNTY

AUG 26 2013

SALEM, OR

PLACE OF USE MAP

SW¼, T.14S., R.13E., W.M.
Section 21, Map 14 13 21 CO
Deschutes County, Oregon
Permit G-7872

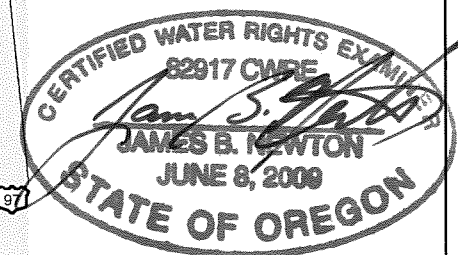
NOTES

1. This map was prepared for the purpose of identifying the location of water rights only and is not intended to provide legal dimensions or locations of property ownership lines.

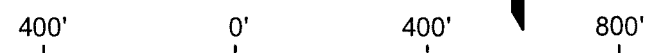
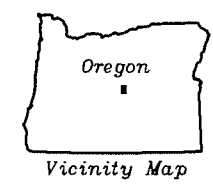
QtrQtr	Tax Lot#	Acres	QtrQtr	Tax Lot#	Acres	QtrQtr	Tax Lot#	Acres
NE-SW	1600	0.48	NW-SW	300	1.26	SW-SW	4900	1.40
	1601	0.54		400	0.90		4901	1.45
	1702	0.43		500	1.21		5100	0.61
	1703	0.65		600	0.38		5200	1.33
	1800	0.98		601	0.53		5300	1.39
	1900	1.09		700	0.62		5400	0.96
	2001	1.10		701	0.14		5401	0.56
	2300	0.59		800	0.49		5500	1.48
	2301	0.37		801	0.23		5600	1.28
	2400	1.21		900	0.25		5700	1.50
	2500	1.24		901	0.44		5800	1.42
	2600	1.04		1000	0.50		5900	1.57
	2700	1.29		1001	0.41		6000	1.96
	2800	1.20		1100	1.25		6100	0.82
	4200	1.21		1200	1.28		6200	1.97
	4300	1.23		1300	1.25		6201	1.10
	4400	0.92		1400	1.18		6300	0.14
	4500	0.98		1500	1.20		6400	0.05
	4600	1.00		1600	0.02		6500	0.06
		17.55		1601	0.02		6600	0.13
				2800	0.01		6700	0.12
				2900	0.92		6800	1.05
				3000	0.42			22.35
				3001	0.48			
				3100	1.03			
				3200	1.44			
				3400	1.14			
				3600	0.39			
				3601	0.51			
				3701	0.91			
				3800	1.01			
				3900	0.38			
				3901	0.36			
				4000	0.79			
				4100	0.70			
				4200	0.03			
				4901	0.29			
				5100	0.08			
				5400	0.04			
				5401	0.02			
				5500	0.05			
					24.57			

☐ Tax Lot 5400 Only
Receives Water
for Irrigation.

Total Acres Irrigated is 64.47



EXPIRES: 12/31/2014
RENEWS:



SCALE: 1" = 400'

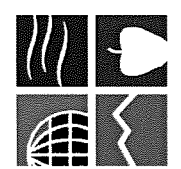


LEGEND

- Tax Lot No. → [Symbol]
- Total Irrigated Acres in Tax Lot → [Symbol]
- Acres in a Tax Lot that Cross a Qtr Qtr Boundary Line → [Symbol]
- Qtr Qtr Boundary Line → [Symbol]
- Irrigated POU → [Symbol]

Base Map: Deschutes County Assessor Tax Map 14 13 21CO

Place of Use Map (Revised as of 2Aug2013)
Circle 'C' Improvement District
Deschutes County, Oregon



NEWTON CONSULTANTS INC.
Earth, Water and Rock Specialists
Ph: 541 504-9981
Fax: 541 504-9980

DESIGNED BY: J. Newton

DRAWN BY: S. Schenck

DATE: AUGUST 2013

PROJECT NO. 1123-102

FIGURE 1