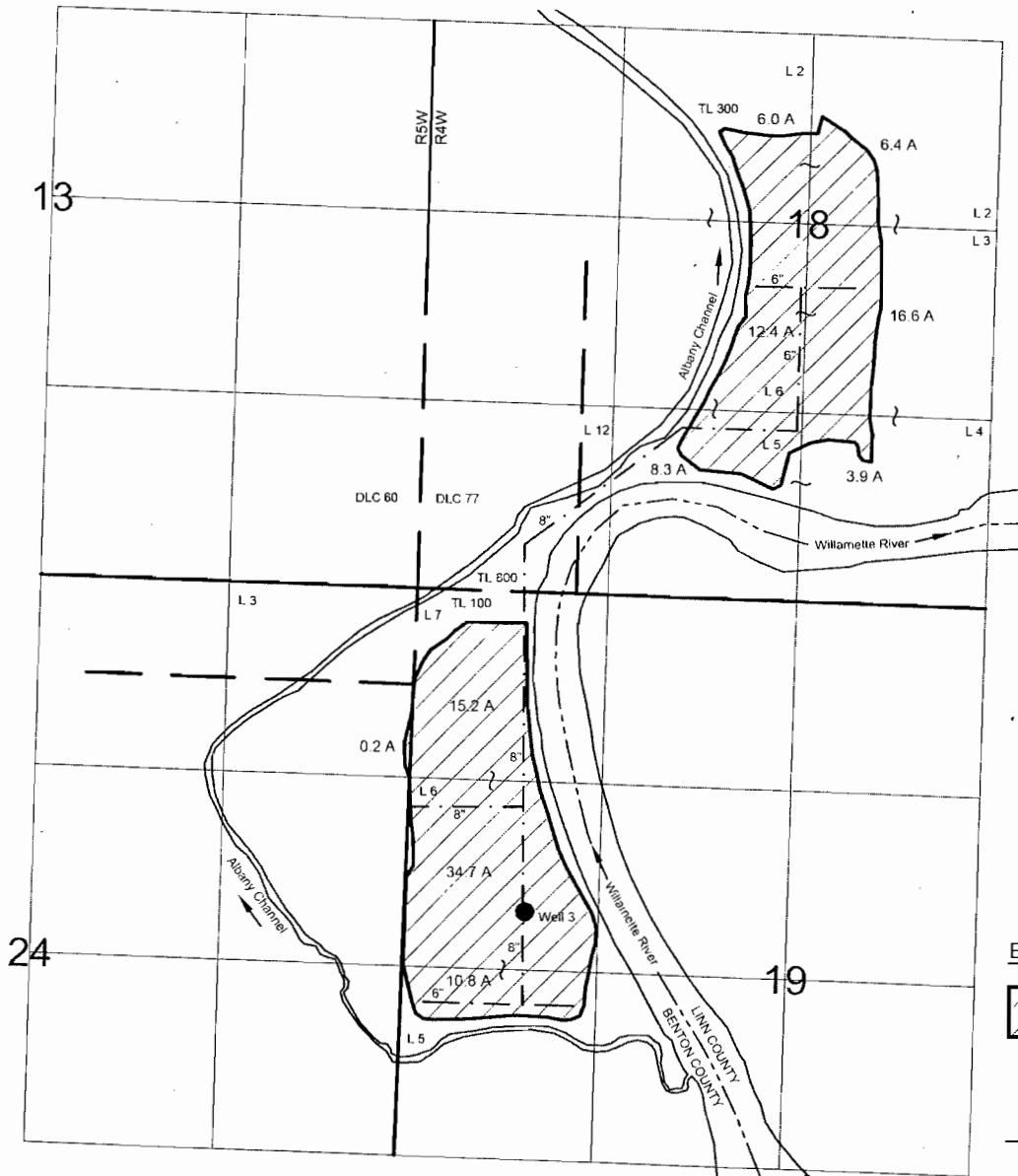





T13S, R4W & R5W W.M.
 Benton County
 T-10645 Claim of Beneficial Use Map
 Larry Venell

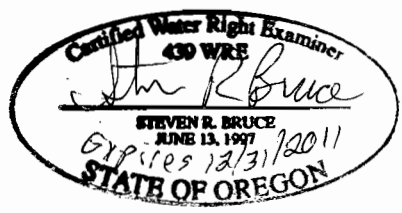


370
 860
 1/4

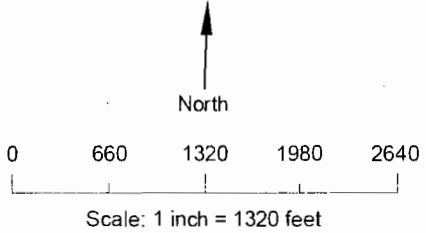
EXPLANATION:

-  - Place of Use (114.5 Acres)
-  - Point of Appropriation
-  - Mainline

Well located 370 ft N and 860 ft E from W 1/4 corner of Section 19



SKOOKUM
 WATER ASSOCIATES INC
 P.O. Box 80174
 Portland, OR 97280
 (503) 319-8926



August 3, 2011

THIS MAP IS NOT INTENDED TO PROVIDE LEGAL DIMENSIONS OR LOCATIONS OF PROPERTY OWNERSHIP LINES.

Site inspection conducted July 7, 2011