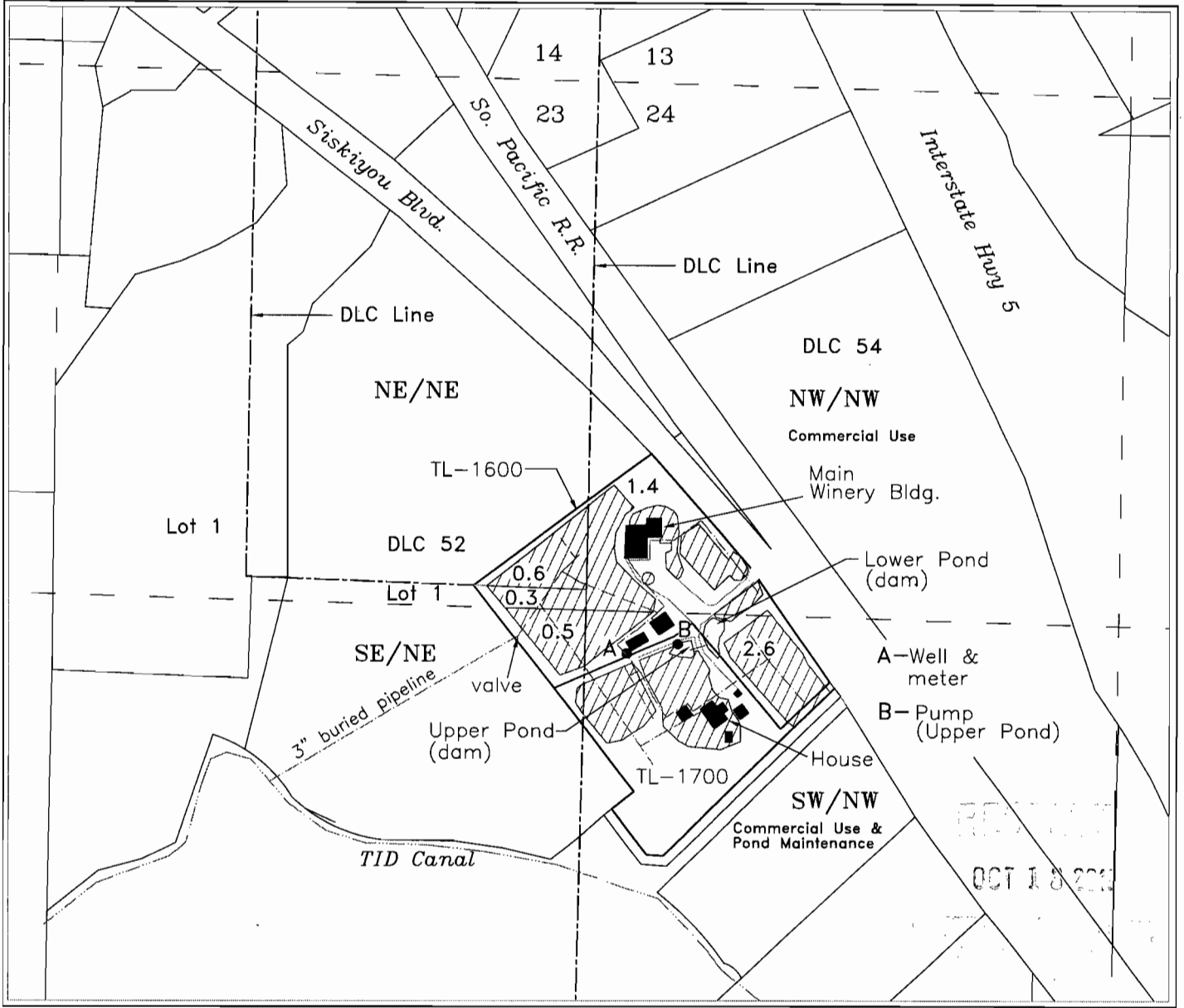


**CLAIM OF BENEFICIAL USE**  
**APPLICATION G-15898      PERMIT G-15611**  
 In The Name Of: **JOHN WEISINGER**  
 Sections 7, Township 39 South, Range 1 East, W.M.  
 Jackson County, Oregon

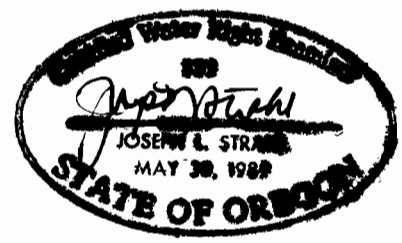
23 & 24 *RCK 2/1/13*



- A- Well & meter - 1435 feet South & 105 feet East from the NW Corner of Section 24
- B- Pump in upper pond

Upper Pond - 1425 feet South & 270 feet East from the NW Corner of Section 24  
 Lower Pond - 1350 feet South & 330 feet East from the NW Corner of Section 24

5.4 acres - Irrigation and Frost Protection



1 inch = 400 feet



Base map Jackson County GIS and partition plat P-01-2007 over 2005 FSA aerial photo for assumed best fit

This map is not intended to provide legal dimensions or locations of property ownership lines

10/07/2010 n.e.d.