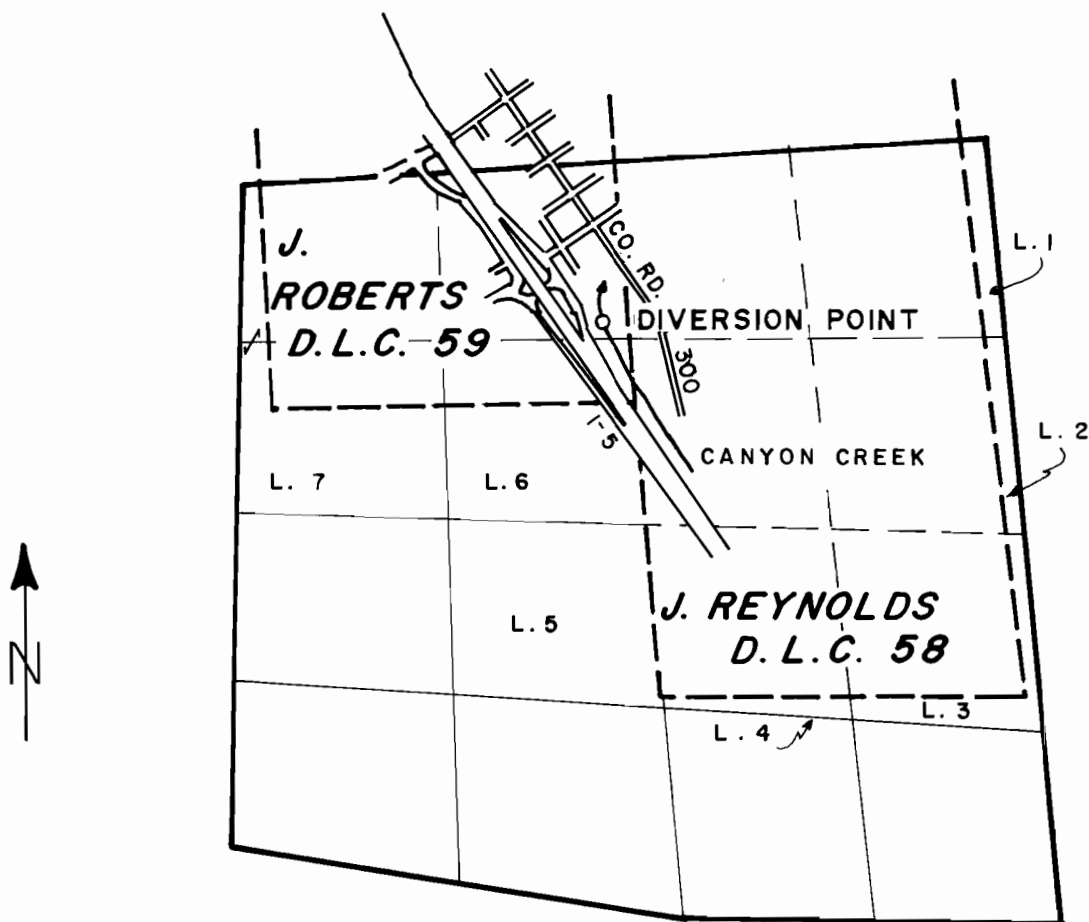


T. 30S., R. 5 W., W.M. SECTION 34



DIVERSION POINT LOCATED 550' N. & 210' W. FROM SE. CORNER D.L.C. 59.

SCALE: 4" = 1 MILE

FINAL PROOF SURVEY UNDER

Transfer Number 5634
IN NAME OF

CLARENCE W. CAMPBELL

Surveyed APRIL 22 1987, by J. M. SCHMORDE