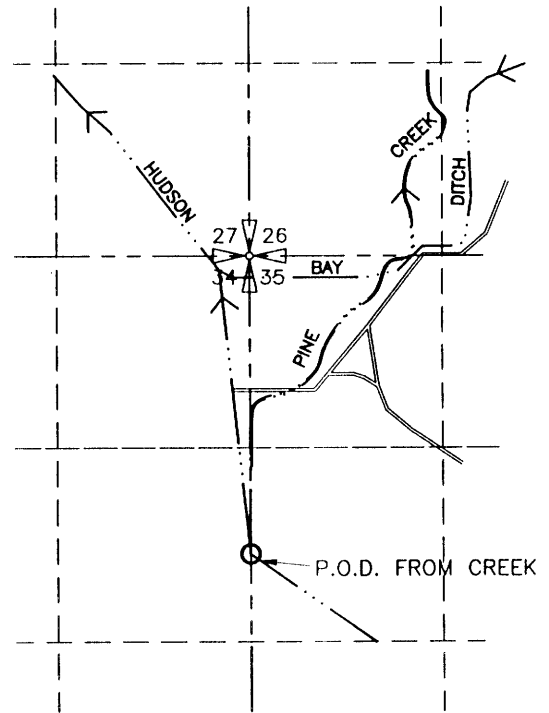
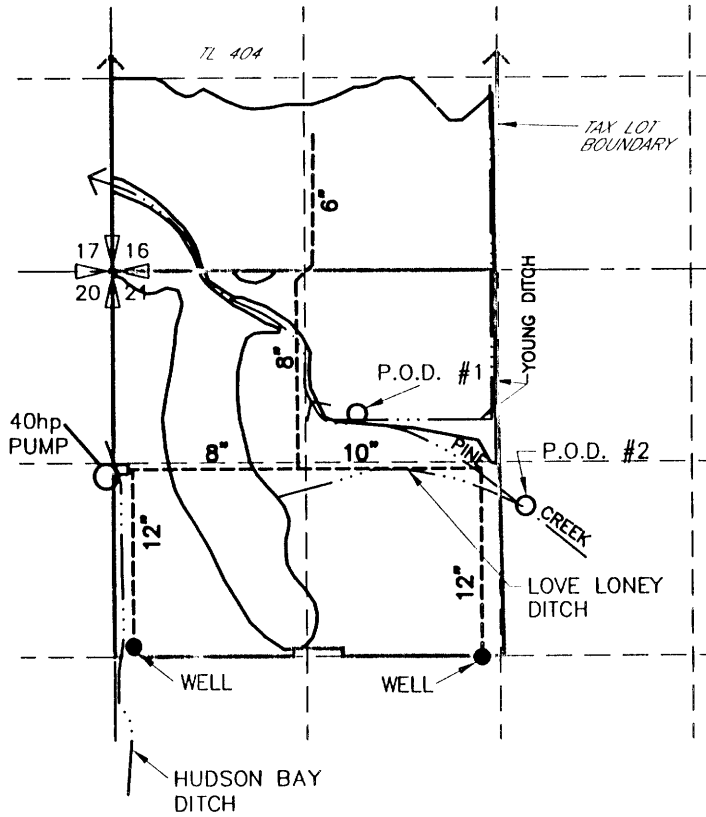


FINAL PROOF SURVEY TRANSFER T-7834 T. O. WILLIAMS & ASSOCIATES

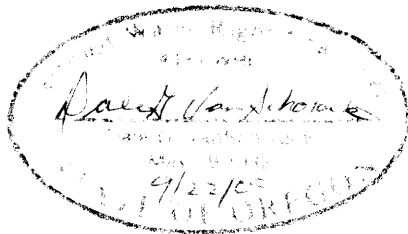
T6N, R34E WM



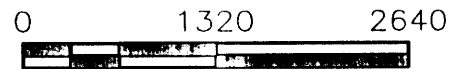
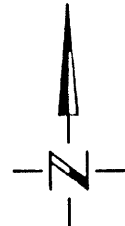
ADDITIONAL POINT OF DIVERSION LOCATED 2040' SOUTH FROM THE NW CORNER OF SECTION 35

AUTHORIZED
POINT OF DIVERSION #1 LOCATED 1650' NORTH AND 1670' EAST FROM THE W 1/4 CORNER OF SECTION 21

POINT OF DIVERSION #2 LOCATED 1625' SOUTH AND 2815' EAST FROM THE NW CORNER OF SECTION 21



RECEIVED



SCALE IN FEET

NOTE:
THE PURPOSE OF THIS MAP IS TO IDENTIFY THE APPROXIMATE LOCATION OF THE WATER RIGHT. IT IS NOT INTENDED TO PROVIDE INFORMATION RELATIVE TO THE LOCATION OF PROPERTY OWNERSHIP BOUNDARY LINES.

3522.065
3522RYFP.DWG
9/12/00