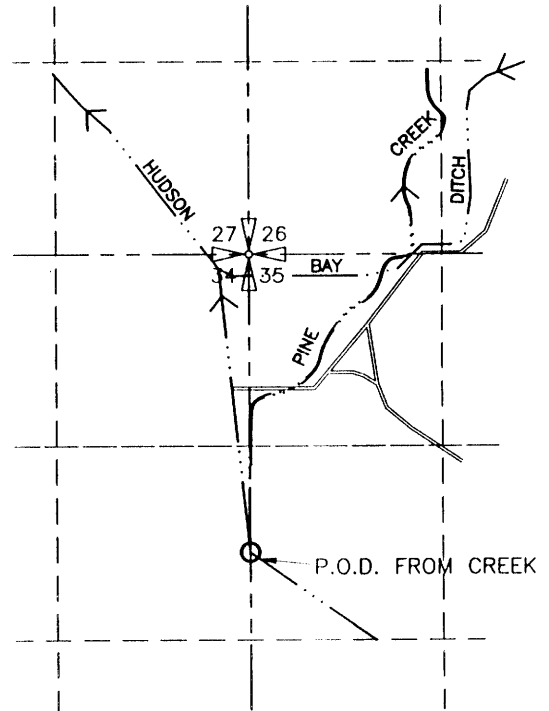
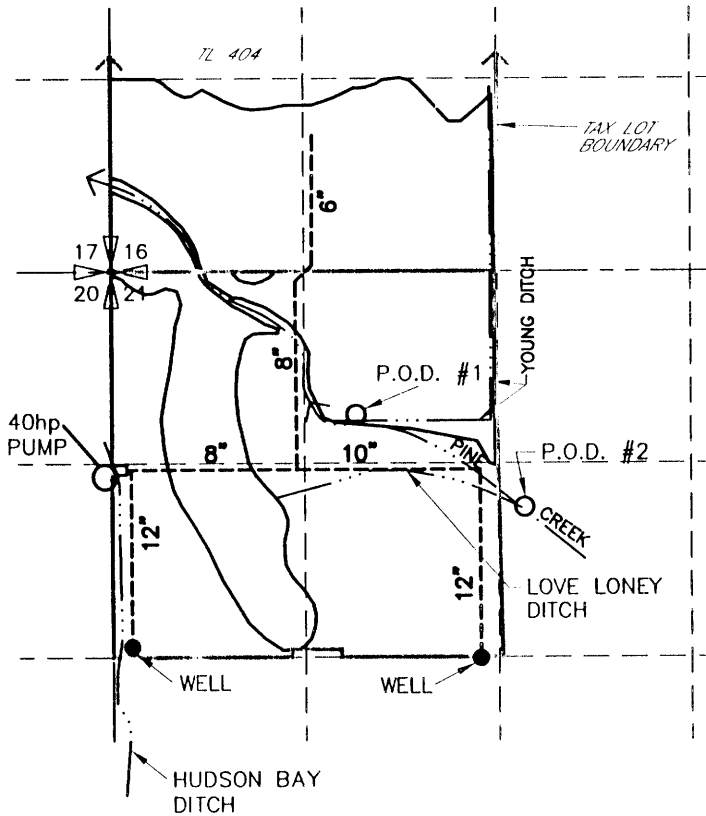


FINAL PROOF SURVEY TRANSFER T-7834 T. O. WILLIAMS & ASSOCIATES

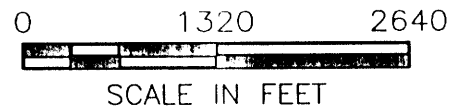
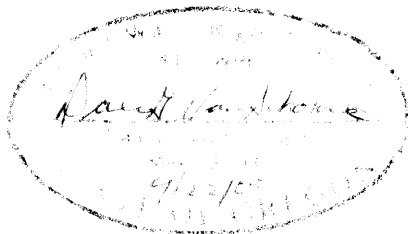
T6N, R34E WM



ADDITIONAL POINT OF DIVERSION LOCATED 2040' SOUTH FROM THE NW CORNER OF SECTION 35

AUTHORIZED
 POINT OF DIVERSION #1 LOCATED 1650' NORTH AND 1670' EAST FROM THE W 1/4 CORNER OF SECTION 21

POINT OF DIVERSION #2 LOCATED 1625' SOUTH AND 2815' EAST FROM THE NW CORNER OF SECTION 21



NOTE:
 THE PURPOSE OF THIS MAP IS TO IDENTIFY THE APPROXIMATE LOCATION OF THE WATER RIGHT. IT IS NOT INTENDED TO PROVIDE INFORMATION RELATIVE TO THE LOCATION OF PROPERTY OWNERSHIP BOUNDARY LINES.

3522.065
 3522RYFP.DWG
 9/12/00