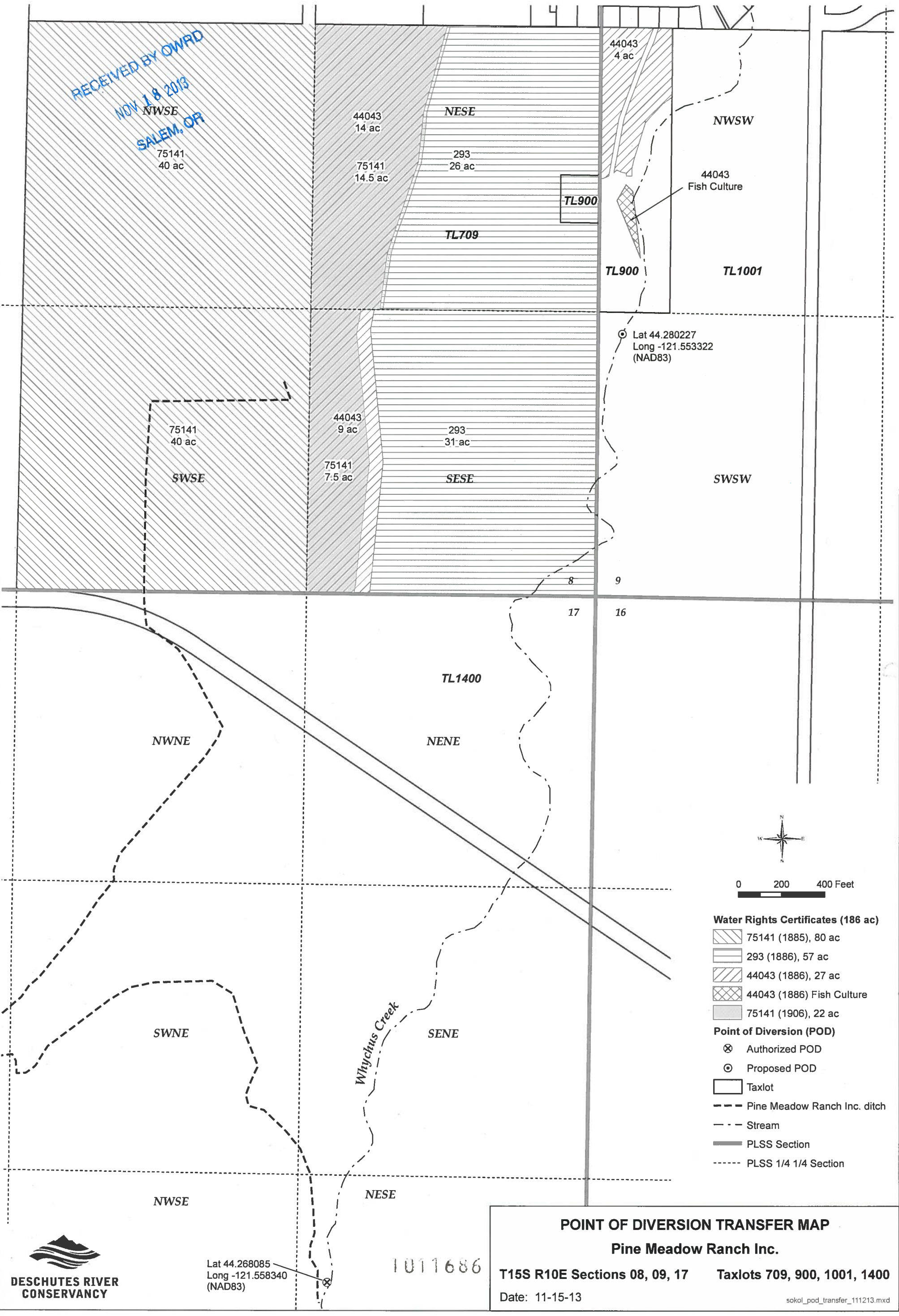


# DESCHUTES COUNTY T15S R10E Sections 08, 09, 17

SCALE: 1" = 400'

D

RECEIVED BY OWRD  
NOV 18 2013  
SALEM, OR



**Water Rights Certificates (186 ac)**

- 75141 (1885), 80 ac
- 293 (1886), 57 ac
- 44043 (1886), 27 ac
- 44043 (1886) Fish Culture
- 75141 (1906), 22 ac

**Point of Diversion (POD)**

- Authorized POD
- Proposed POD

- Taxlot
- Pine Meadow Ranch Inc. ditch
- Stream
- PLSS Section
- PLSS 1/4 1/4 Section

**POINT OF DIVERSION TRANSFER MAP  
Pine Meadow Ranch Inc.**

**T15S R10E Sections 08, 09, 17 Taxlots 709, 900, 1001, 1400**

Date: 11-15-13

sokol\_pod\_transfer\_111213.mxd



Lat 44.268085  
Long -121.558340  
(NAD83)

1011686