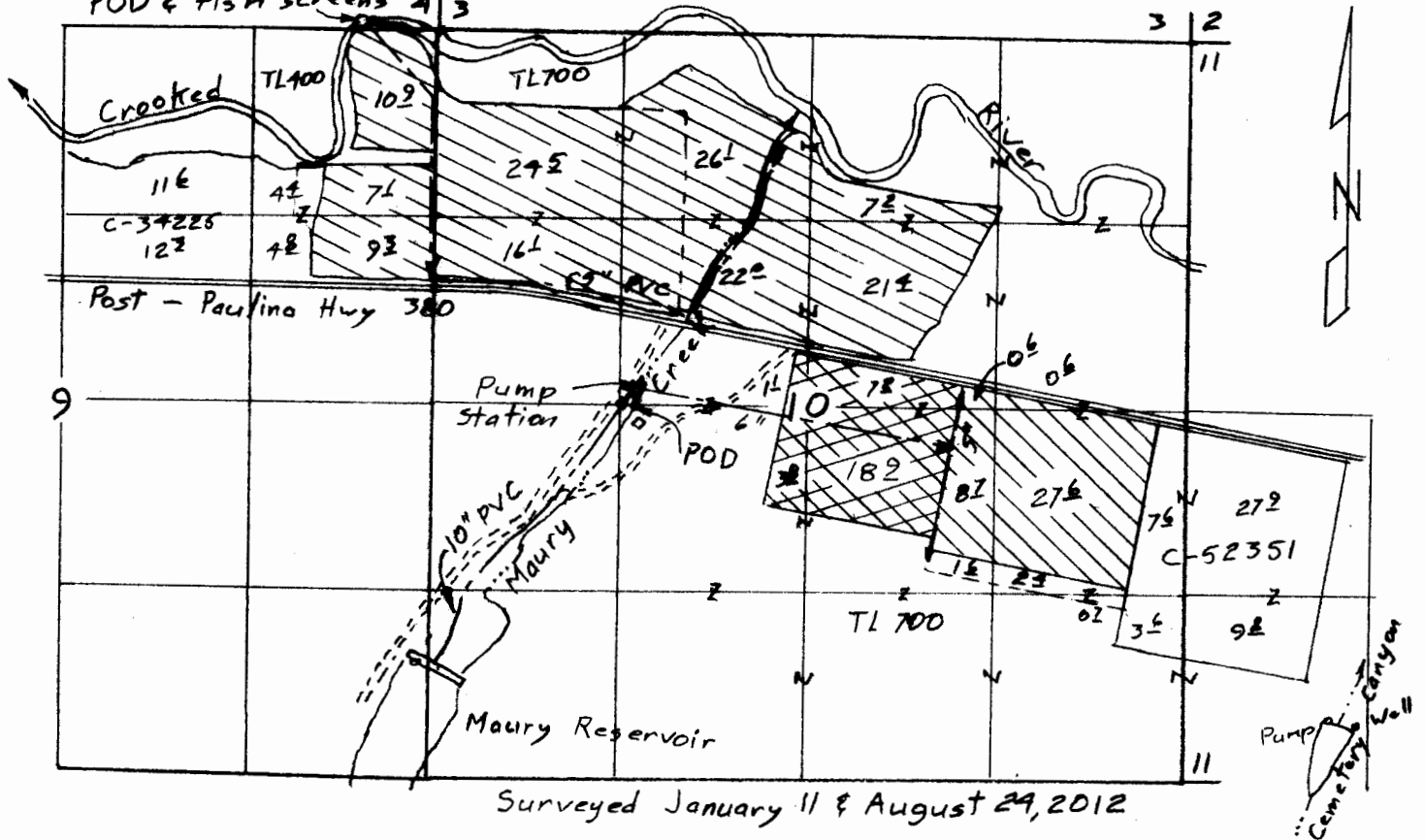


TOWNSHIP 17 SOUTH, RANGE 21 EAST, W.M.

POD & fish screens 4 | 3



Surveyed January 11 & August 29, 2012

Crooked R. ⊗ C-32421 144½ acres (1959)

Maury Cr. ⊗ C-534 31½ acres (1885)

Maury Cr. & Res. ⊗ C-52349 68½ acres (1966)

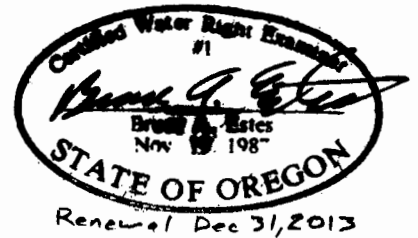
Scale 1" = 1320'
(4" = 1 mile)

Crooked River POD: 30' N & 600' W from SE corner section 4
 Maury Reservoir: 1890'S & 100'E from W ¼ corner section 10
 Maury Creek: 30'S & 1450'E from W ¼ corner section 10

Claim of Beneficial Use Map
for

T-7341

LES SCHWAB TIRE CENTERS, INC.



RECEIVED

FEB 26 2012

WATER RIGHTS DIVISION
SALEM, OREGON

This map is for the purpose of locating a water right only and has no intent to provide legal dimensions or the location of property lines.

ESTES SURVEYS, LLC

PO Box 47849
Salem, OR 97308-7849
(503) 388-7888

60382 Arnold Rd
Bend, OR 97702
(541) 382-7391