

Certified Water Right Examiner
 #372 WRE
John E. Borden
 John E. Borden
 May 11, 1994
 STATE OF OREGON
 Exp: 12-31-2013

T. 6N. R10W., W.M.
 GEARHART GOLF LINKS
 SECTIONS 3 AND 4
 CLATSOP COUNTY
 P.O. BOX 2874
 GEARHART, OR 97138

PREPARATION OF THIS MAP IS FOR THE
 PURPOSE OF IDENTIFYING THE LOCATION OF
 THE WATER RIGHT ONLY. THERE IS NO
 INTENT TO PROVIDE DIMENSIONS OR
 LOCATION OF PROPERTY OWNERSHIP LINES.

COBU MAP #0588

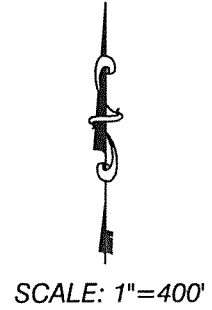
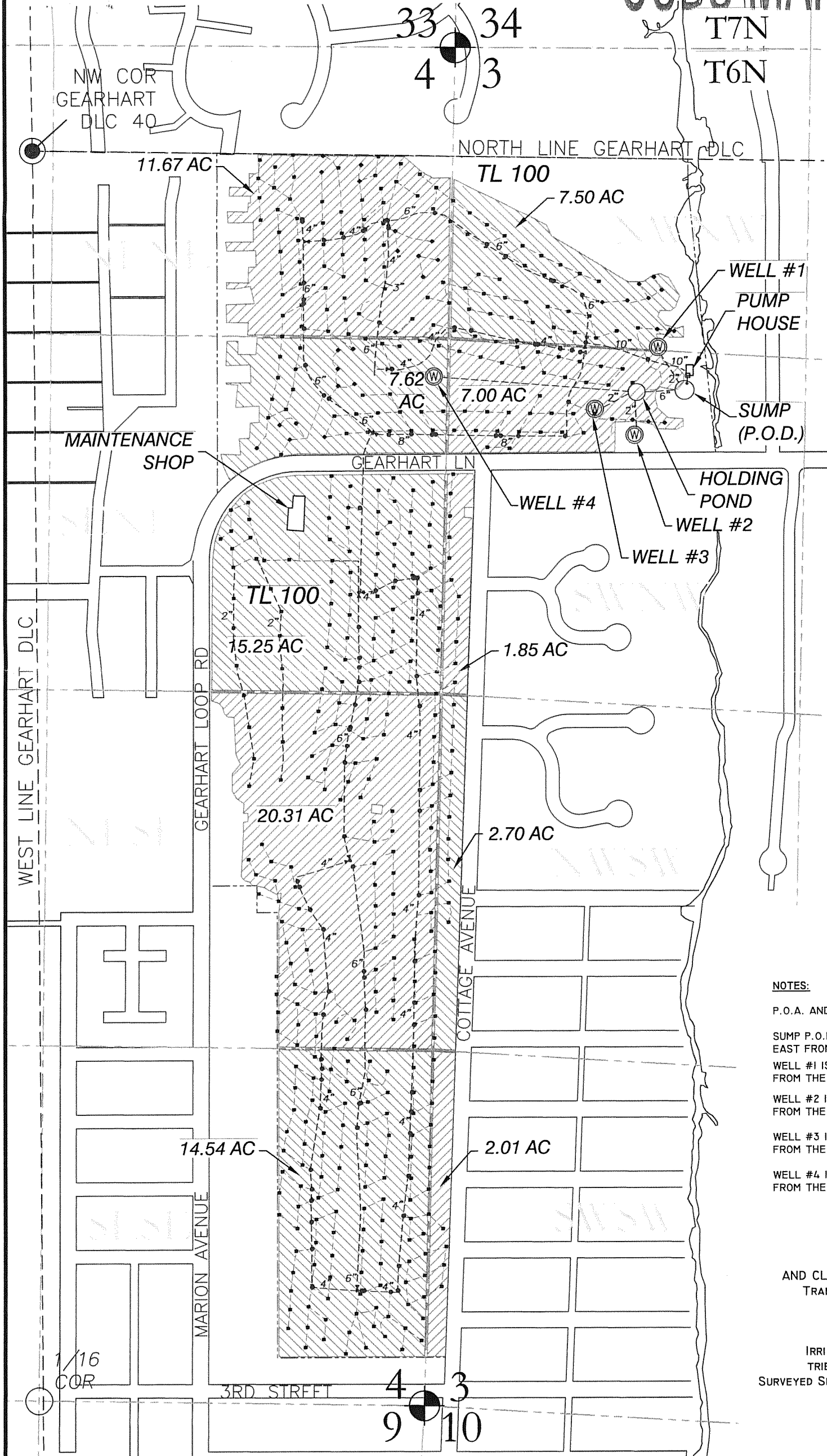
P.O.U. - PLACE OF
 IRRIGATION USE
 BY ACRES BY 1/4 - 1/4

SECTION 3

GEARHART DLC #40
 NW 1/4 NW 1/4 - 7.50 AC
 SW 1/4 NW 1/4 - 8.85 AC
 NW 1/4 SW 1/4 - 2.70 AC
 SW 1/4 SW 1/4 - 2.01 AC
 TOTAL SEC 3 = 21.06 AC

SECTION 4

GEARHART DLC #40
 NE 1/4 NE 1/4 - 11.67 AC
 SE 1/4 NE 1/4 - 22.87 AC
 NE 1/4 SE 1/4 - 20.31 AC
 SE 1/4 SE 1/4 - 14.54 AC
 TOTAL SEC 4 = 69.39 AC
 TOTAL ACRES = 90.45



LEGEND

- PROPERTY LINE
- USGS GRID
- DLC BOUNDARY
- ⊙ SECTION CORNER
- ⊙ WELL (P.O.D.)
- ▨ IRRIGATION (P.O.U.)
- STRUCTURE
- HEADER PIPE
- SPRINKLER LOOP
- SPRINKLER HEAD
- ⋈ GATE VALVE
- ISOLATION VALVE

NOTES:

P.O.A. AND P.O.D. LOCATIONS:
 SUMP P.O.D. IS 879.2' SOUTH AND 2,417.9' EAST FROM THE NW COR, GEARHART DLC 40
 WELL #1 IS 768.1' SOUTH AND 2,313.8' EAST FROM THE NW COR, GEARHART DLC 40
 WELL #2 IS 1,068.4 SOUTH AND 2,226.2' EAST FROM THE NW COR, GEARHART DLC 40
 WELL #3 IS 971.3' SOUTH AND 2,079.4' EAST FROM THE NW COR, GEARHART DLC 40
 WELL #4 IS 848.5' SOUTH AND 1,482.8' EAST FROM THE NW COR, GEARHART DLC 40

SURVEY

AND CLAIM OF BENEFICIAL USE UNDER
 TRANSFER APPLICATION NO. T-9319
 IN THE NAME OF
 GEARHART GOLF LINKS
 FOR
 IRRIGATION FROM NEACOXIE CREEK,
 TRIBUTARY TO THE PACIFIC OCEAN
 SURVEYED SEPTEMBER 8, 2010, BY JOHN E. BORDEN

RECEIVED

DEC 05 2013