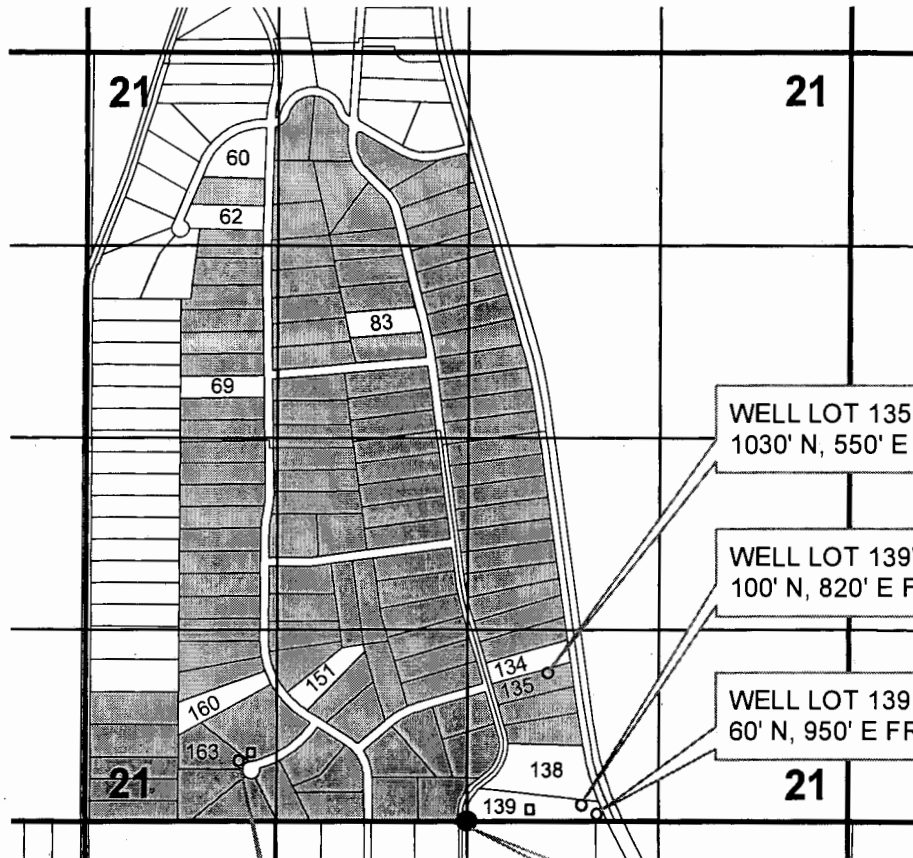


CROOK COUNTY, OREGON  
**T 15 S, R 16 E, WM**  
**SECTION 21**



- ▣ CISTERNS
- WELLS
- ▭ SECTION BOUNDARIES
- ▭ TAX LOTS
- ▭ QUARTER - QUARTERS
- ▨ PLACE OF USE

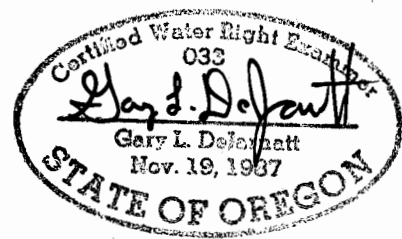
WELL LOT 135 WITH METER  
 1030' N, 550' E FROM S 1/4 CORNER

WELL LOT 139W WITH METER  
 100' N, 820' E FROM S 1/4 CORNER

WELL LOT 139 E WITH METER  
 60' N, 950' E FROM S 1/4 CORNER

S 1/4 CORNER

WELL LOT 163  
 430' N, 1520' W FROM S 1/4 CORNER  
 METER IN ADJACENT PUMP HOUSE



RECEIVED BY OWRD

JUN 24 2013

RENEWAL DATE 12-31-2013

SALEM, OR

**CLAIM OF BENEFICIAL USE MAP**  
**for HIGH DESERT ESTATES**  
**AP G-14046 / T-11268 PERMIT G-16890**

NOTE: THIS MAP IS NOT INTENDED TO  
 PROVIDE LEGAL DIMENSIONS OR LOCATIONS  
 OF PROPERTY OWNERSHIP LINES.

PROJECT # 13044

**WATER RIGHT SERVICES, LLC**  
 PO BOX 1830, BEND, OR 97709  
**WWW.OREGONWATER.US**

JUNE 11, 2013      JOHNSHORT@USA.COM