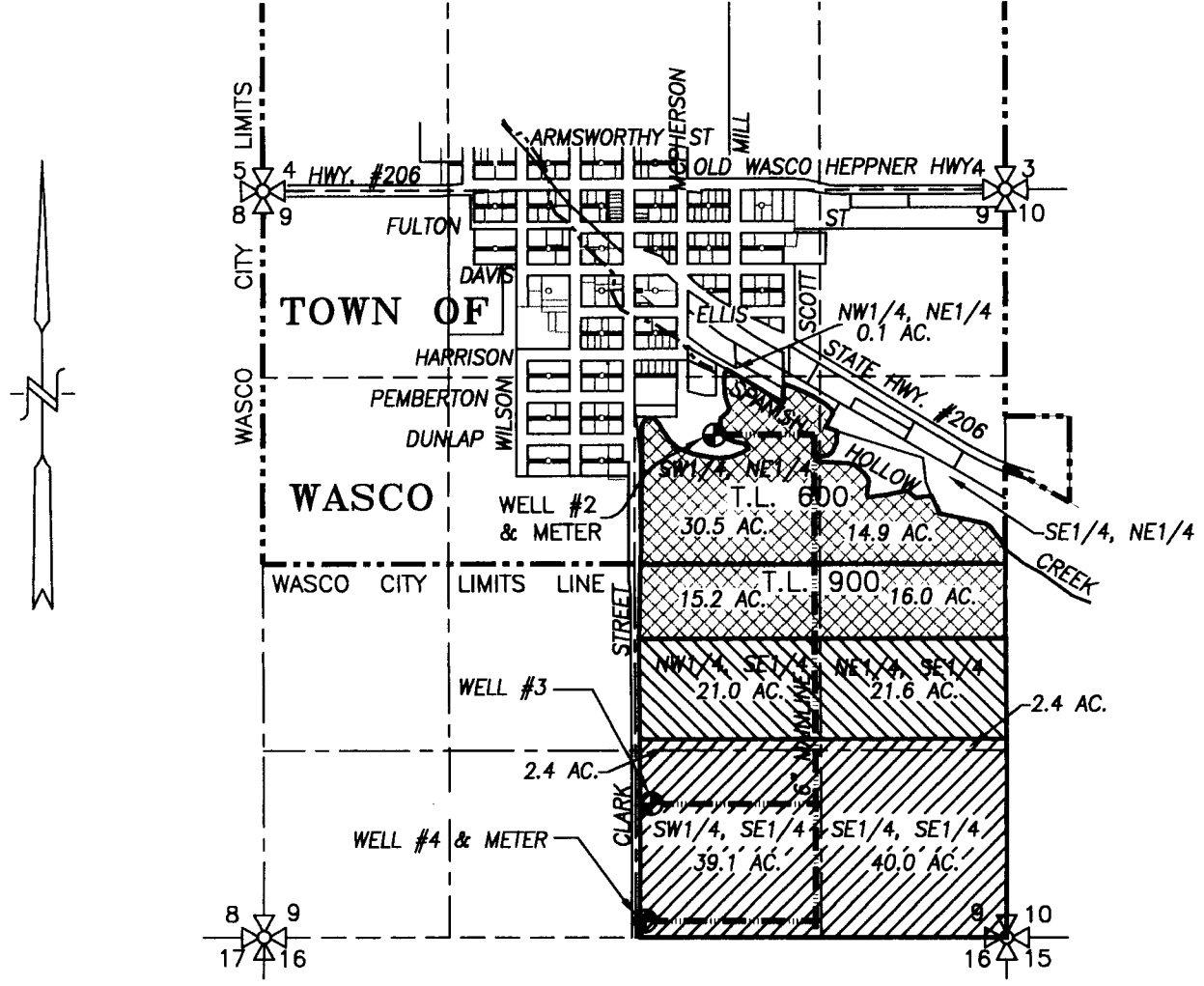


0506

SECTION 9, TWP.1 N. RANGE 17 E. W.M.
SHERMAN COUNTY, OREGON

CORRUPT MAP # 0506



LEGEND:

- WELL #2 (SHER 266); 1,730' S. & 2,070' W. OF NE CORNER SECTION 9
- WELL #3 (SHER 50201); 946' N. & 2,530' W. OF SE CORNER SECTION 9
- WELL #4 (SHER 50206); 117' N. & 2,595' W. OF SE CORNER SECTION 9

- 83.9 AC. APPLICATION G-16972 (SUPPLEMENTAL)
APPLICATION G-16760 (SUPPLEMENTAL)
TRANSFER 10123 (PRIMARY)
- 42.6 AC. APPLICATION G-16972 (SUPPLEMENTAL)
APPLICATION G-16760 (SUPPLEMENTAL)
CERTIFICATE 82506 (PRIMARY)
- 76.7 AC. APPLICATION G-16972 (PRIMARY)
APPLICATION G-16760 (SUPPLEMENTAL)
- EXISTING 6" IRRIGATION MAIN LINE

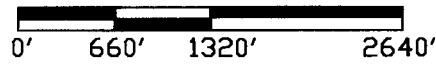
RECEIVED

JUN 01 2010

WASCO POLICE DEPT
SHERMAN COUNTY

CLAIM OF BENEFICIAL USE MAP

SCALE: 1" = 1320'



TRANSFER No. T-10123
 APPLICATION No. G-16760, G-16972
 PERMIT No. G-16537, G-16396
 IN THE NAME OF:
FOREST PETERS



DATE: MAY 5, 2010

EXPIRES: 06/30/2010

BY: **TENNESON ENGINEERING CORP.**
 CONSULTING ENGINEERS
 3313 W. 2nd STREET, SUITE 100
 THE DALLES, OREGON 97058
 PH. 541-296-9177 FAX 541-296-6657

NOTE:
 *THIS MAP IS NOT INTENDED TO
 PROVIDE DIMENSIONS OR LOCATIONS
 OF PROPERTY OWNERSHIP LINES.*

W.O. #11810wr