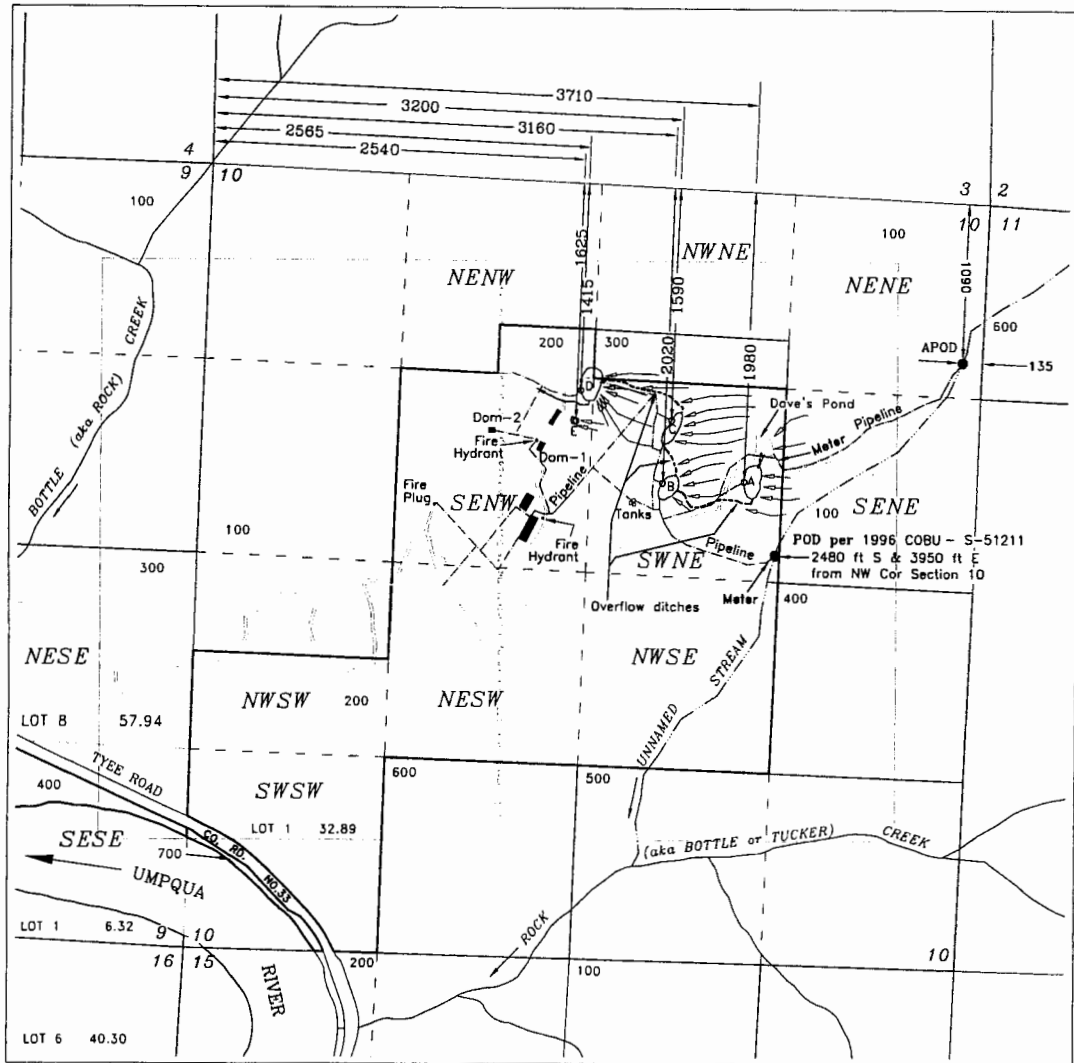


CLAIM OF BENEFICIAL USE

TRANSFER 9447

TRANSFER 9448

MAP 1 of 2 - POINTS OF DIVERSION & DISTRIBUTION SYSTEM
TOWNSHIP 25 SOUTH, RANGE 7 WEST, W.M.
DOUGLAS COUNTY OREGON



KIRPAL LIGHT SATSANG, INC.

Scale
1 inch = 1320 feet

- Ⓐ-Ⓔ Reservoir identification (T-9447)
- POD's from Unnamed Stream (T-9447 & 9448)
- Location of outlets in reservoirs (T-9447)

≡≡≡ Seepage from Spring Areas & Runoff - No Channel (T-9447)

NOTE: There are springs within the areas of Res. C, D, & E
Reservoirs are connected via overflow ditches & pipelines
so that water collected in upper reservoirs drains to lower reservoirs

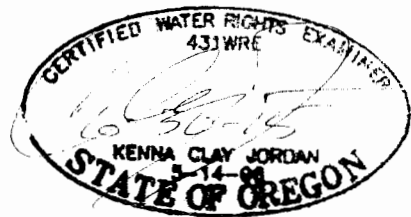
USE OF WATER - T-9447 - IRRIGATION, SUPPLEMENTAL IRRIGATION & DOMESTIC USE IN 2 DWELLINGS

USE OF WATER - T-9448 - IRRIGATION & MAINTENANCE OF A FIRE PROTECTION SYSTEM (Tanks & Reservoirs)

For purpose of locating POD's & outlets, Cardinal directions are in reference from point of beginning (NW COR Section 10) extending along it's boundary lines

This map is not intended to provide legal dimensions or locations of property ownership lines

Base Map: Douglas County GIS
2005 FSA Aerial Photos
USGS Quadrangle



JORDAN ENGINEERING
460 JORDAN LANE
ROSEBURG, OR 97471
(541) 673-1931

Revised 5/8/2014 n.e.d.

CLAIM OF BENEFICIAL USE

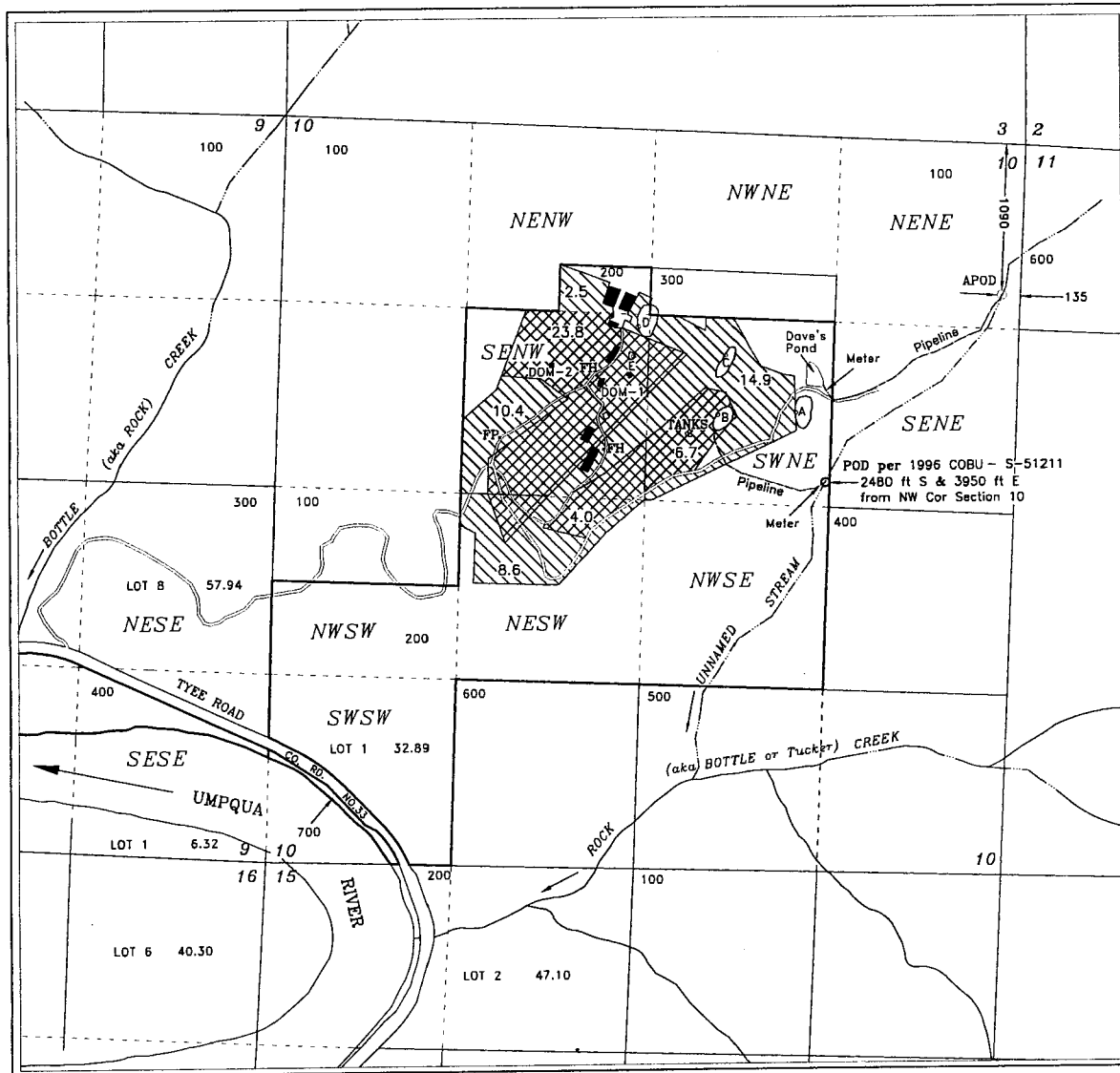
TRANSFER 9447

TRANSFER 9448

MAP 2 OF 2 USE AND PLACE OF USE

TOWNSHIP 25 SOUTH, RANGE 7 WEST, W.M.

DOUGLAS COUNTY OREGON



KIRPAL LIGHT SATSANG, INC.

USE OF WATER

T-9448



34.5 Acres - Irrigation
Supplemented by T-9447

Maintenance of a Fire Protection System (Tanks & Reservoirs)

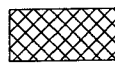
FP - Fire Plug

FH - Fire Hydrant

T-9447



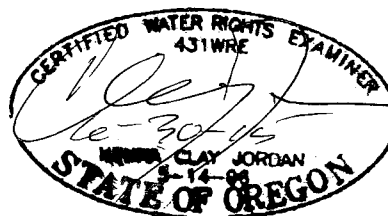
36.4 Acres - Irrigation



34.5 Acres - Supplemental Irrigation
Supplemental to T-9448

Domestic use in 2 dwellings

This map is not intended to provide legal dimensions or locations of property ownership lines



NORTH

Scale

1 inch = 1320 feet



Base Map: Douglas County GIS
2005 FSA Aerial Photos
USGS Quadrangle

JORDAN ENGINEERING
460 JORDAN LANE
ROSEBURG, OR 97471
(541) 673-1931

Revised 12/19/2013 n.e.d.