

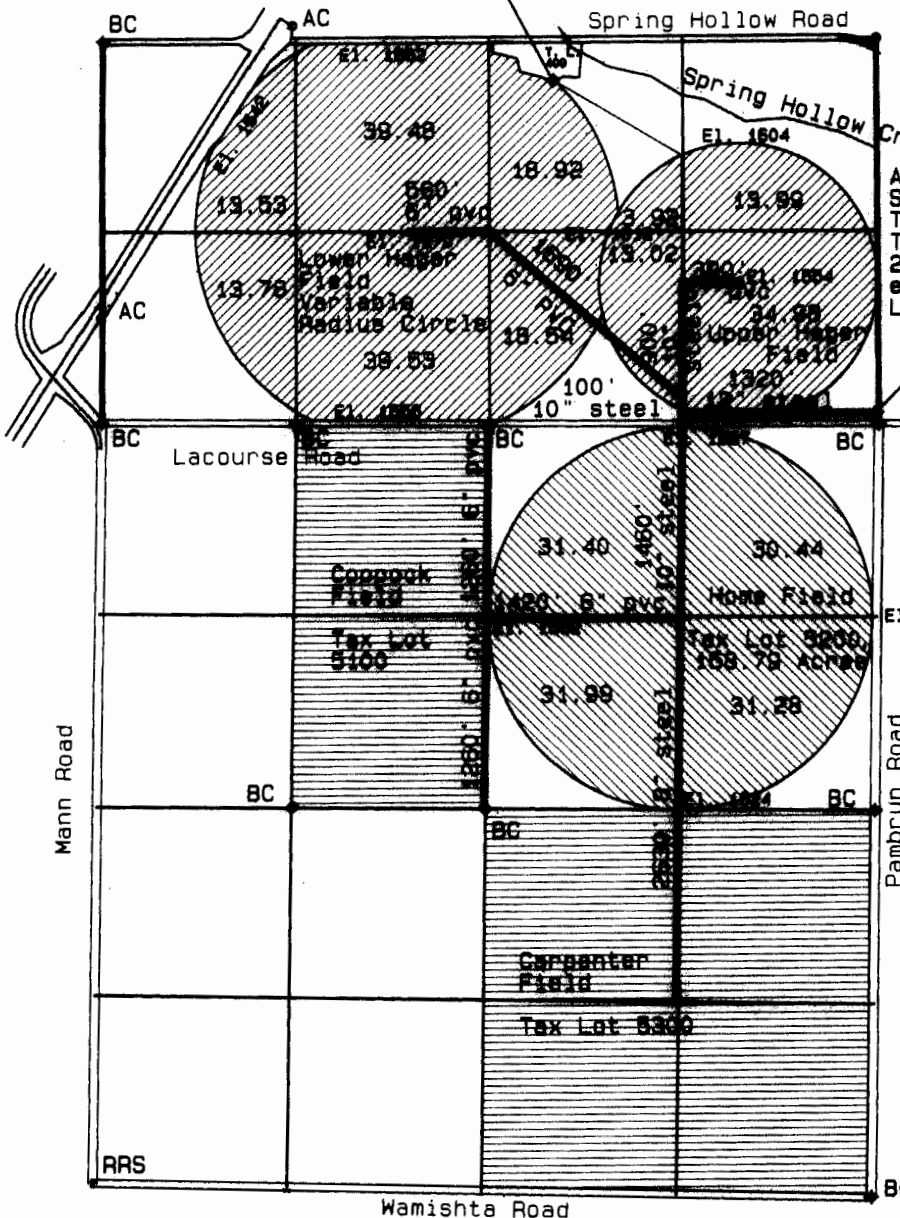
**FINAL PROOF SURVEY  
CLAIM OF MUNICIPAL USE  
CHANGE IN POINT OF DIVERSION  
T-10374  
T. 3 N., R. 34 E., W. M.  
SECTIONS 3 AND 10**



0 1320  
Scale: 1"=1320'

Previous Source  
Well UMAT 1434  
near south line of  
Tax Lot 400.

City Limits of Adams lies  
mostly West of  
Highway 11 Rights of Way  
with a small amount in  
that right of way.



All south half of  
Section 3 is  
Tax Map 3N3403,  
Tax Lot 300,  
286.62 Acres,  
except for Tax  
Lot 400, 2.70 acres.

New Source:  
UMAT 1428  
Well - 80' north  
and 20' west of  
BC Section corner.  
In line  
McCrometer meter  
is located about  
40' west of well.  
El. 1718

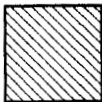
El. 1688

All Section 10 is  
Tax Map 3N34.

Note:  
All pipe lines  
shown are  
buried supply lines.

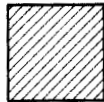


NOT PART OF  
TRANSFER  
Section 10  
NENW  
SENW  
NWE  
SWE  
SESE



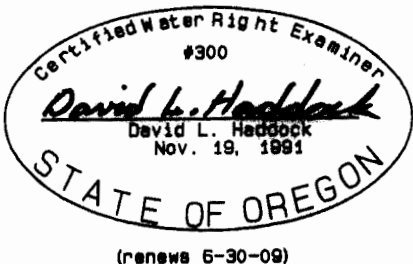
T-10374  
CERT 40900  
HOME CIRCLE  
SECTION 10  
NWNE 31.40 ac.  
SWNE 31.99 ac.  
NENE 30.44 ac.  
SENE 31.28 ac.

Total 125.11 ac.



T-10374  
CERT 40891  
SECTION 3  
NWSW 13.53 ac., Lower Hager  
NESW 39.48 ac., Lower Hager  
NWSE 22.84 ac. (18.92 ac., Lower Hager,  
3.92 ac., Upper Hager)  
NESE 13.99 ac., Upper Hager  
SWSW 13.78 ac., Lower Hager  
SESW 39.53 ac., Lower Hager  
SWSE 31.56 ac., (18.54 ac., Lower Hager,  
13.02 ac., Upper Hager)  
SESE 34.98 ac., Upper Hager  
Total 209.69 ac.

This map is not  
intended to  
provide legal  
dimensions or  
locations of  
property  
ownership  
lines.



David L. Haddock  
P.O. Box 177001  
Salem, Oregon 97301  
**HADDOCK SURVEYING**  
GPS  
AND  
TOTAL STATION

**LEWIS & CLARK ENGINEERING INC.**  
1000 1/2 1st St  
Salem, OR 97301  
503-585-5555

**RECEIVED**

OCT 06 2008

WATER RESOURCES DEPT  
SALEM OREGON

(renews 6-30-09)