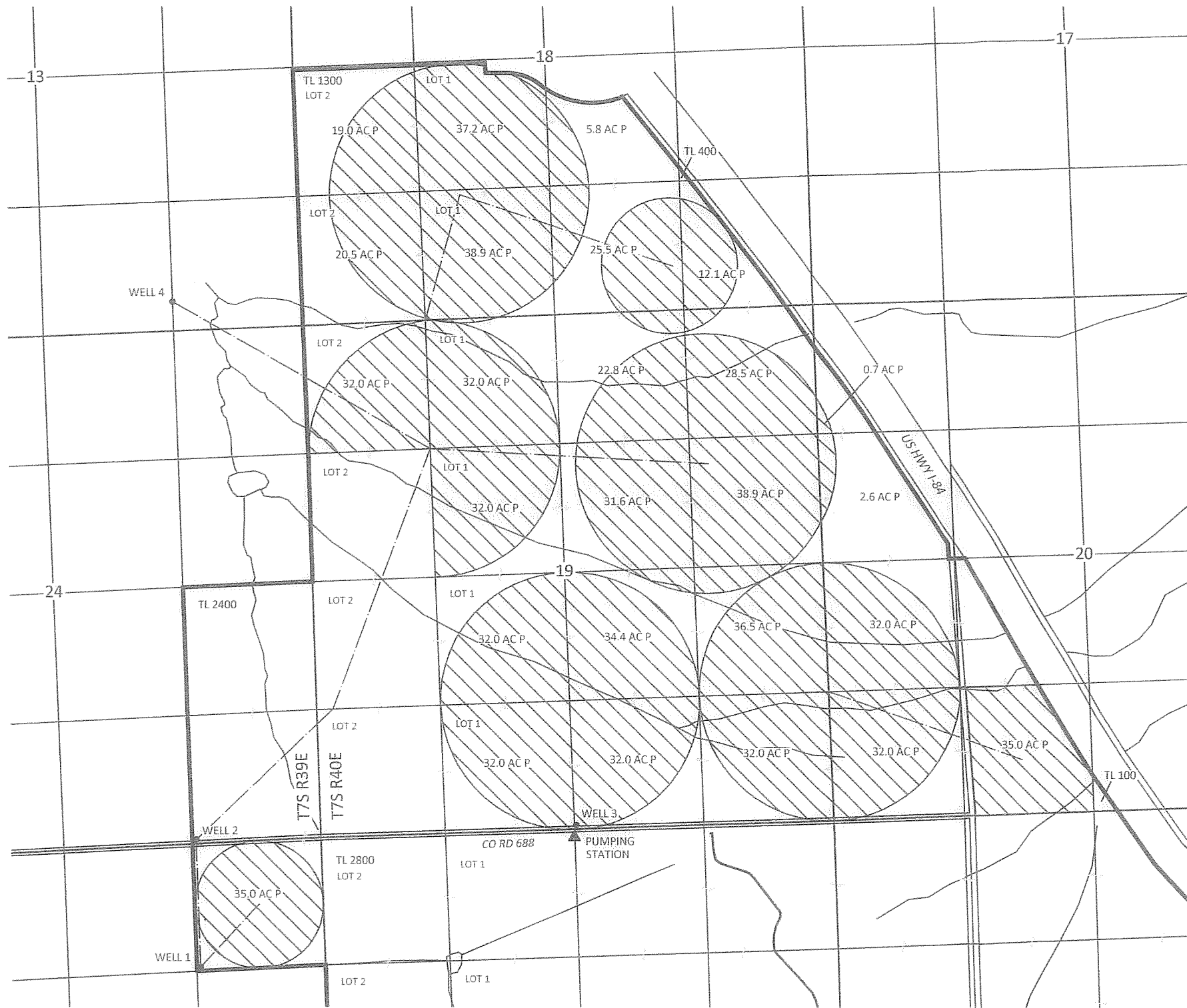





Sections 24 & 25, T7S, R39E, W.M.  
 Sections 18, 19 & 20, T7S, R40E, W.M.  
 BAKER COUNTY

Application G-14771, Permit G-13616  
 AMENDED CLAIM OF BENEFICIAL USE MAP  
 McEst RANCHES, LLC



EXPLANATION

-  PLACE OF USE  
PRIMARY IRRIGATION (713.0 AC)  
PRIORITY: 6/10/1998
-  APPROXIMATE LOCATION OF MAIN LINE
-  WELL

NOTES:

1. This map is intended to correct the locations of the places of use shown on a Final Proof Survey map filed with the Oregon Water Resources Department on October 1, 2004.
2. The well location information stated on the 2004 Final Proof Survey map and the locations of the mainline piping are assumed to be correct.

This map is true and correct to the best of my knowledge based on a review of 2003, 2004, 2005, 2009, 2012 and 2013 aerial images. The images support that the places of use shown on this map have not changed over time relative to the projected locations of section and quarter-quarter section lines obtained from the U.S. Bureau of Land Management.

RECEIVED BY OWRD

MAR 05 2014

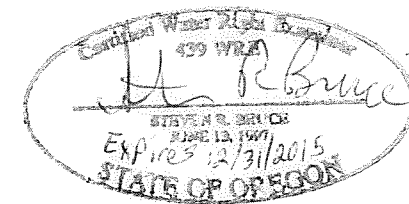
SALEM, OR



SCALE



1 INCH = 1320 FEET



**SKOOKUM**  
 WATER ASSOCIATES INC

P.O. BOX 80174  
 PORTLAND, OR 97280  
 (503) 319-8926

- Well 1 Reported Location: 40 ft N and 40 ft E from NE 1/16 Corner of Sec. 25
- Well 2 Reported Location: 40 ft N and 40 ft E from E 1/16 Corner between Sec. 24 & 25
- Well 3 Reported Location: 40 ft N and 20 ft E from S 1/4 Corner of Sec. 19
- Well 4 Reported Location: 300 ft N from E 1/16 Corner between Sec. 13 & 24

**COBU MAP #820**

This map is not intended to provide legal dimensions or locations of property ownership lines

FEBRUARY 28, 2014

FIGURE 1