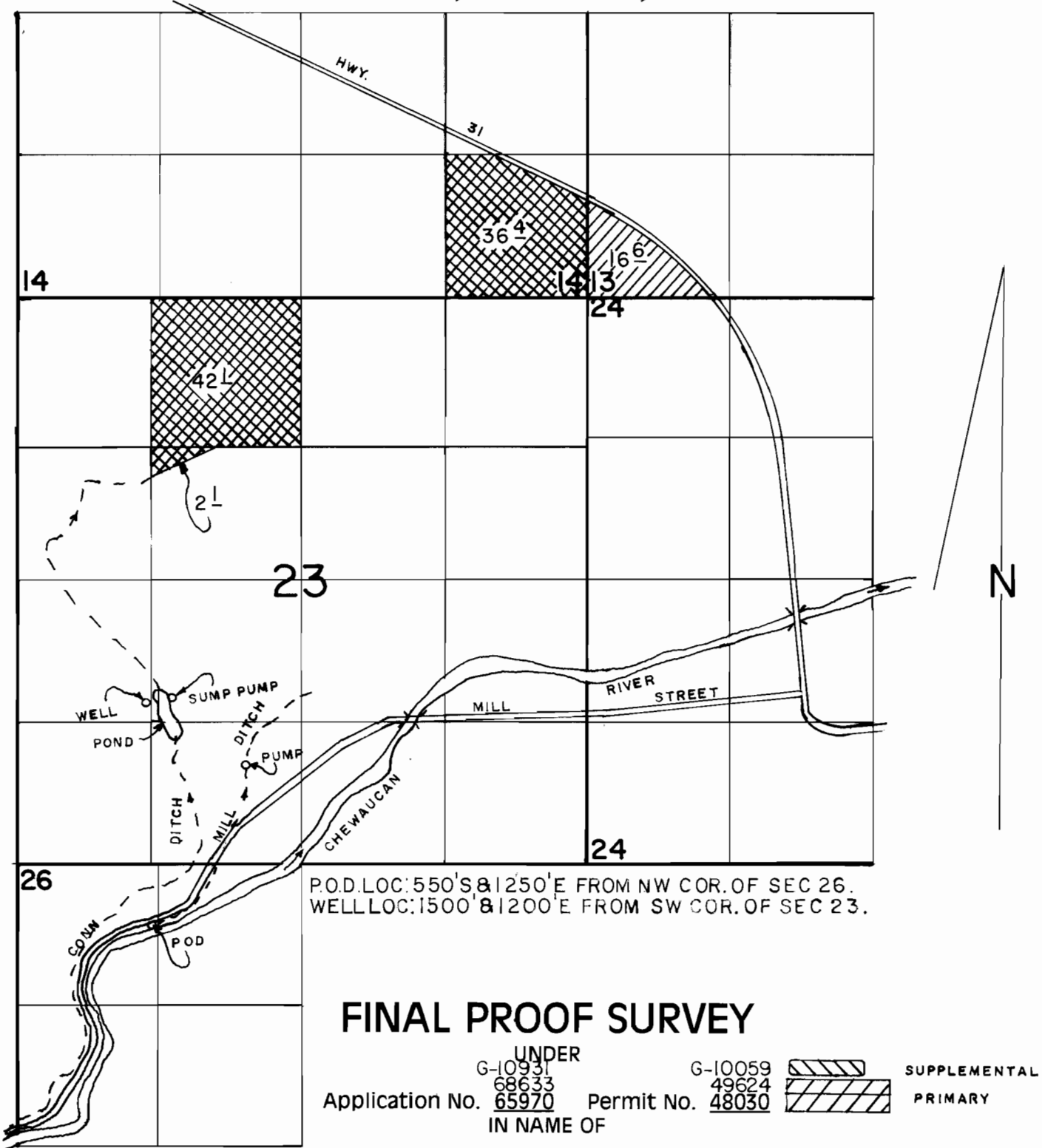


T. 33S., R. 18E., W.M.



P.O.D. LOC: 550'S & 1250'E FROM NW COR. OF SEC 26.
 WELL LOC: 1500' & 1200'E FROM SW COR. OF SEC 23.

FINAL PROOF SURVEY

UNDER

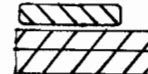
G-10931
68633

Application No. 65970

IN NAME OF

G-10059
49624

Permit No. 48030



SUPPLEMENTAL
PRIMARY

ROSS A. COLAHAN

Surveyed APRIL 12, 1994, by R.M.SUTTERFIELD