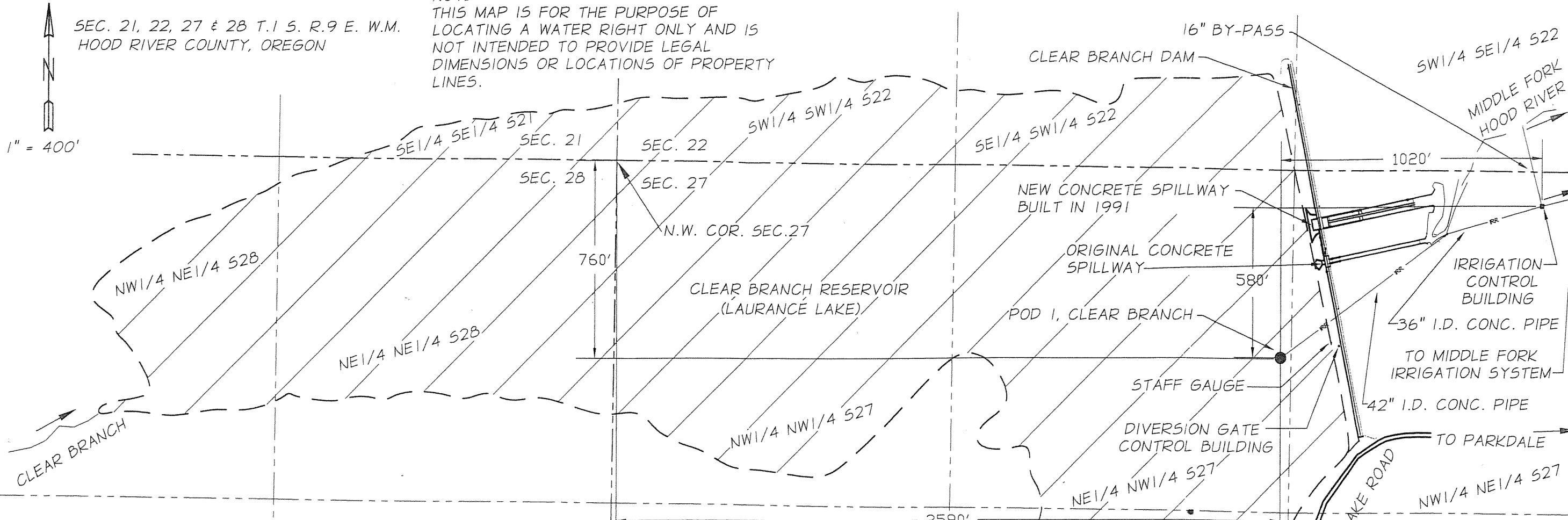


R:\MIDDLE-FORK-IRR-DIST\199-449 (217) Water Rights 2012\Laurance Lake R-4862\DWG\SURVEY C3D CBU R-4862.dwg, 2/21/2012 10:32:12 AM, \\lgprint\HP_L1

SEC. 21, 22, 27 & 28 T.1 S. R.9 E. W.M.
HOOD RIVER COUNTY, OREGON

NOTE:
THIS MAP IS FOR THE PURPOSE OF
LOCATING A WATER RIGHT ONLY AND IS
NOT INTENDED TO PROVIDE LEGAL
DIMENSIONS OR LOCATIONS OF PROPERTY
LINES.



CLEAR BRANCH RESERVOIR - STORAGE RIGHT

GENERAL NOTES

1. POD 1, CLEAR BRANCH IS LOCATED 760 FEET SOUTH AND 2590 FEET EAST FROM THE N.W. COR. OF SECTION 27, T.1S.,R.9 E. IN THE NE 1/4 OF THE NW 1/4 OF SEC. 27. A TOTALIZING FLOW METER IS LOCATED AT THE IRRIGATION CONTROL BUILDING AS SHOWN..

SECTION 21
SE 1/4 SE 1/4
SECTION 22
SW 1/4 SW 1/4
SE 1/4 SW 1/4
SW 1/4 SE 1/4
SECTION 27
NW 1/4 NE 1/4
NE 1/4 NW 1/4
NW 1/4 NW 1/4
SE 1/4 NW 1/4
SECTION 28
NE 1/4 NE 1/4
NW 1/4 NE 1/4

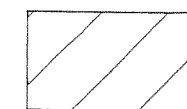
STORAGE RIGHT 3,550 ACRE FEET (TOTAL)
2,650 ACRE FEET STORAGE (PRIMARY)
150 ACRE FEET FISH CULTURE (PRIMARY)
750 ACRE FEET JOINT USE FISH CULTURE &
IRRIGATION (PRIMARY)

RECEIVED

MAR 05 2012

WATER RESOURCES DEPT
SALEM, OREGON

LEGEND



PERMIT # R-4862
TAX LOT 015 09E #100
(MT. HOOD NATIONAL FOREST)



POINT OF DIVERSION - POD 1,
CLEAR BRANCH



CENTERLINE CREEK & RIVER



SECTION LINE



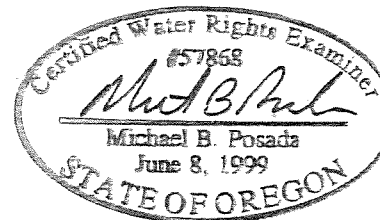
1/4 SECTION LINE



IRRIGATION PIPELINE



LAURANCE LAKE SHORELINE



EXPIRATION DATE: 12-31-12

DATED: 02-21-12

COBU MAP # 0665

JOB # 1199-449 (217)

DATE OF SURVEY: 12/19/2011

anderson
perry
& associates, inc.

CLAIM OF BENEFICIAL USE MAP
MIDDLE FORK IRRIGATION DISTRICT
CLEAR BRANCH (LAURANCE LAKE) RESERVOIR
STORAGE RIGHT

APP.NO. R-43452

PERMIT NO. R-4862

FIGURE

1