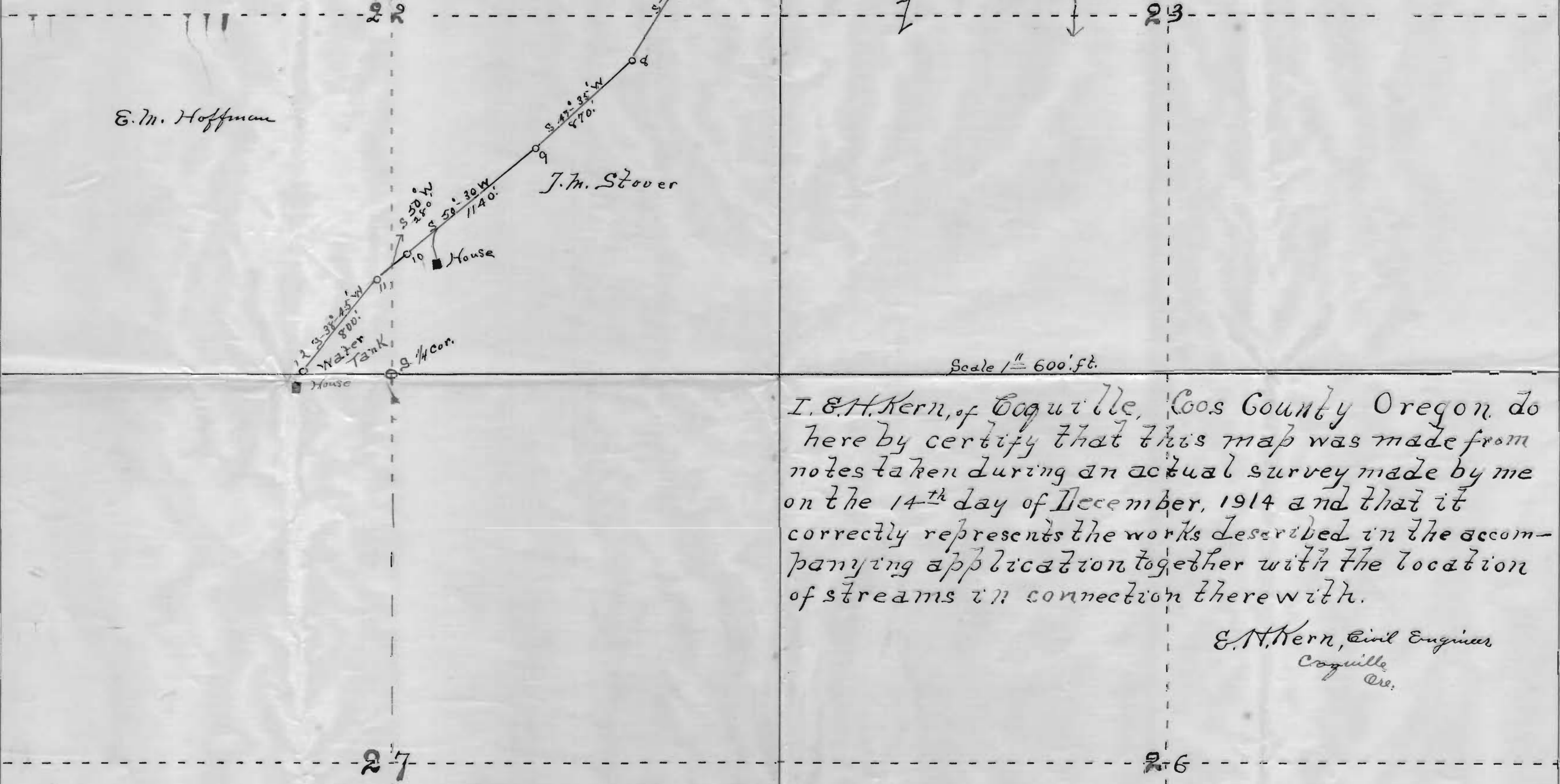


Map of The J. M. Stover Pipe Line  
 Twp. 29 S. R. 12 W. Willamette Merd.  
 Coos Co. Ore.

Scale 1" = 600' ft.



Scale 1" = 600' ft.

I, E. H. Kern, of Coquille, Coos County Oregon do here by certify that this map was made from notes taken during an actual survey made by me on the 14<sup>th</sup> day of December, 1914 and that it correctly represents the works described in the accompanying application together with the location of streams in connection therewith.

E. H. Kern, Civil Engineer  
 Coquille, Ore.

RECEIVED  
 JAN 15 1915  
 SALEM, OREGON.

Application No. 4064  
 Permit No. 2346

Hopt

Hopt