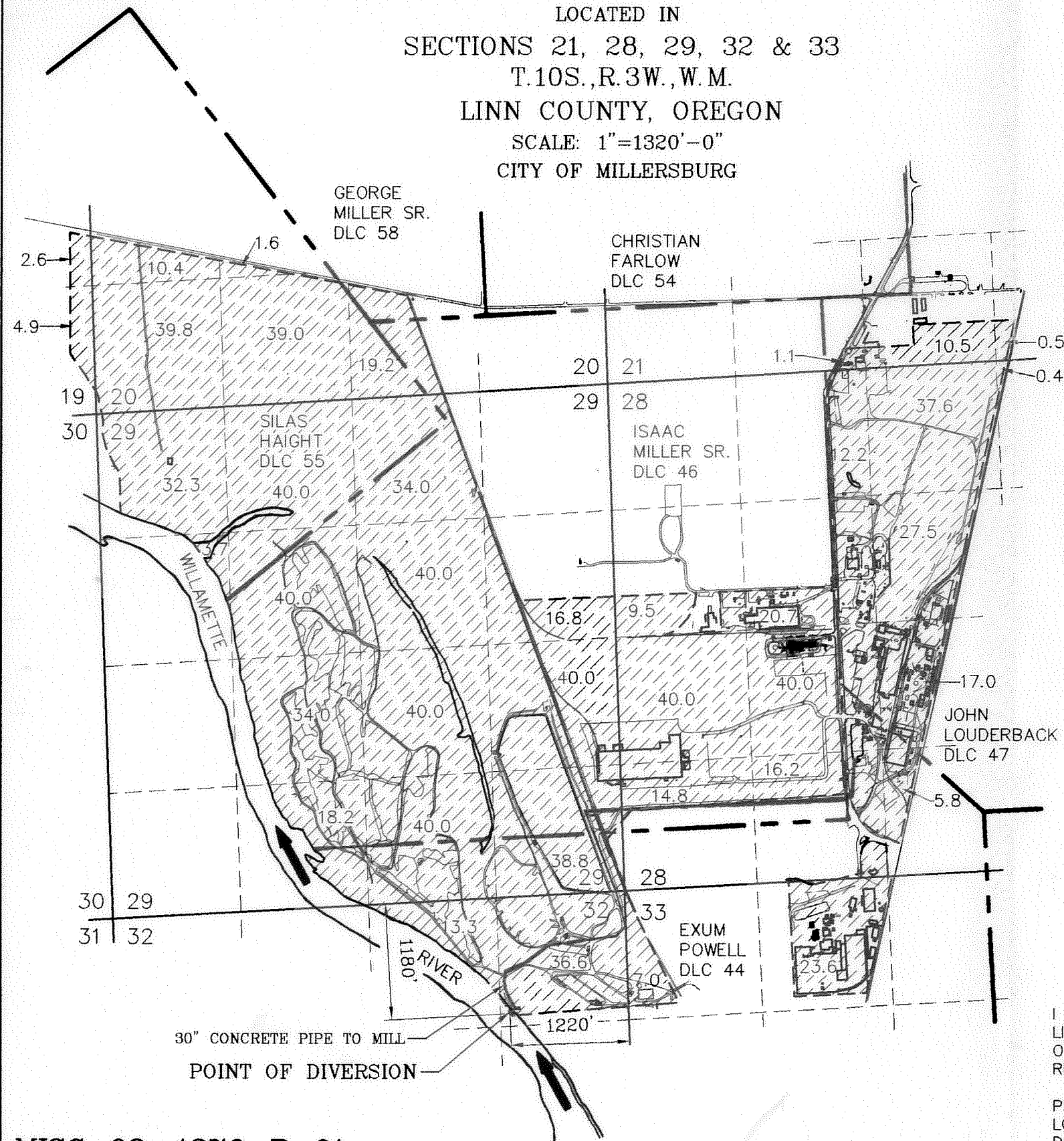


# FINAL PROOF MAP FOR WEYERHAEUSER COMPANY FOR INDUSTRIAL USE UNDER T-7526

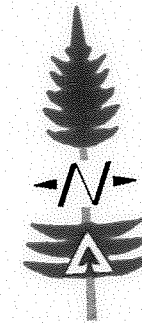
LOCATED IN  
SECTIONS 21, 28, 29, 32 & 33  
T.10S., R.3W., W.M.  
LINN COUNTY, OREGON  
SCALE: 1"=1320'-0"  
CITY OF MILLERSBURG



RECEIVED

NOV 20 2002

WATER RESOURCES DEPT.  
SALEM, OREGON



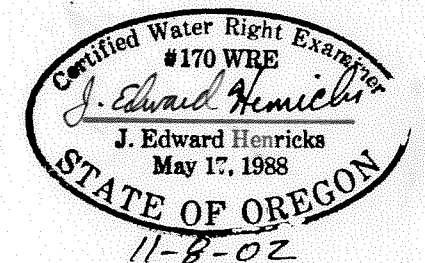
### LEGEND:

- SECTION LINES
- - - FORTY LINES
- DONATION LAND CLAIM LINES
- - - APPROXIMATE PROPERTY LINE
- /// = AREA TO BE COVERED BY TRANSFER OF WATER RIGHTS 871.9 ACRES

### ACREAGE SUMMARY

SECTION 19	—SE 1/4, SE 1/4	4.9 ACRES DLC 55
	NE 1/4, SE 1/4	2.6 ACRES DLC 55
SECTION 20	—SW 1/4, SW 1/4	39.8 ACRES DLC 55
	NW 1/4, SW 1/4	10.4 ACRES DLC 55
	SE 1/4, SW 1/4	39.0 ACRES DLC 55
		0.1 ACRES DLC 58
	NE 1/4, SW 1/4	1.6 ACRES DLC 55
	SW 1/4, SE 1/4	4.0 ACRES DLC 58
		5.6 ACRES DLC 46
		9.6 ACRES DLC 55
SECTION 21	—SE 1/4, SW 1/4	1.1 ACRES DLC 47
	SW 1/4, SE 1/4	10.5 ACRES DLC 47
	SE 1/4, SE 1/4	0.5 ACRES DLC 47
SECTION 28	—NW 1/4, NE 1/4	37.6 ACRES DLC 47
	NE 1/4, NW 1/4	12.2 ACRES DLC 47
	NE 1/4, NE 1/4	0.4 ACRES DLC 47
	SW 1/4, NE 1/4	27.5 ACRES DLC 47
	SE 1/4, NW 1/4	12.2 ACRES DLC 47
		8.5 ACRES DLC 46
	NW 1/4, SE 1/4	16.0 ACRES DLC 47
		1.0 ACRES DLC 44
	SW 1/4, SE 1/4	5.8 ACRES DLC 44
	NE 1/4, SW 1/4	4.5 ACRES DLC 44
		7.4 ACRES DLC 47
		28.1 ACRES DLC 46
	SE 1/4, SW 1/4	8.5 ACRES DLC 44
		9.9 ACRES DLC 46
	SW 1/4, NW 1/4	9.5 ACRES DLC 46
	NW 1/4, SW 1/4	40.0 ACRES DLC 46
	SW 1/4, SW 1/4	14.8 ACRES DLC 46
SECTION 29	—SE 1/4, NW 1/4	16.8 ACRES DLC 46
	NE 1/4, SE 1/4	40.0 ACRES DLC 46
	SE 1/4, SE 1/4	21.0 ACRES DLC 46
		17.8 ACRES DLC 44
	NW 1/4, NE 1/4	20.2 ACRES DLC 46
		13.8 ACRES DLC 55
	SW 1/4, NE 1/4	40.0 ACRES DLC 46
	NW 1/4, SE 1/4	40.0 ACRES DLC 46
	SW 1/4, SE 1/4	20.9 ACRES DLC 46
		19.1 ACRES DLC 44
	NE 1/4, NW 1/4	1.4 ACRES DLC 46
		38.6 ACRES DLC 55
	SE 1/4, NW 1/4	7.0 ACRES DLC 55
		33.0 ACRES DLC 46
	NE 1/4, SW 1/4	34.0 ACRES DLC 46
	SE 1/4, SW 1/4	12.6 ACRES DLC 46
		5.6 ACRES DLC 44
	NW 1/4, NW 1/4	32.3 ACRES DLC 55
	SW 1/4, NW 1/4	3.7 ACRES DLC 55
SECTION 32	—NW 1/4, NE 1/4	13.3 ACRES DLC 44
	NE 1/4, NE 1/4	36.6 ACRES DLC 44
SECTION 33	—NW 1/4, NW 1/4	7.0 ACRES DLC 44
	NE 1/4, NW 1/4	23.6 ACRES DLC 44

**871.9 ACRES TOTAL**



I J. EDWARD HENRICKS, BEING DULY SWORN AS A WATER RIGHT EXAMINER LICENSE NO. 170, HAVE PREPARED THIS MAP FOR WEYERHAEUSER COMPANY ON THIS 8th DAY OF NOVEMBER, 2002. THE AREAS HATCHURED REPRESENT THE AREAS APPLIED TO BENEFICIAL USE.

PREPARATION OF THIS MAP IS FOR THE PURPOSE OF IDENTIFYING THE LOCATION OF THE WATER RIGHT ONLY AND HAS NO INTENT TO PROVIDE DIMENSIONS OR LOCATION OF PROPERTY OWNERSHIP LINES.

MISC-02-4276-P-01

ONLY DOCUMENTS STAMPED WITH  
RED INK ARE ORIGINALS.