

FINAL PROOF SURVEY

THOMAS H. LINVILLE D.L.C. 47 & 65
 T. 12 & 13 S., R. 6 W., W.M.
 BENTON COUNTY, OREGON
 APPLICATION FILE NOS. R-75281 & S-75282
 PERMIT NOS. R-12205 & 53217

IN THE NAME OF
 DON L. & ALBERTA R. STEWART

NOVEMBER 17, 1997



N.W.
 CORNER
 D.L.C. 65

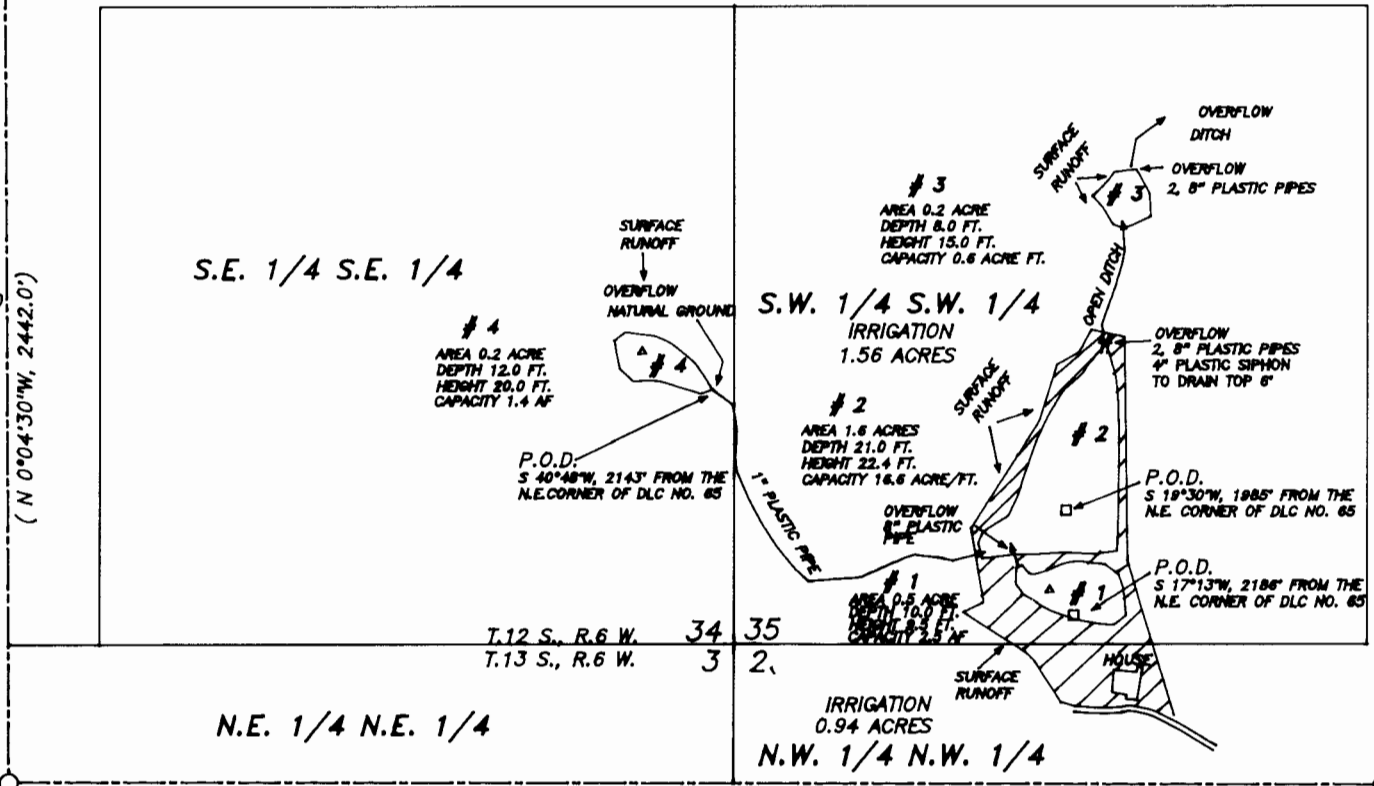
N.E.
 CORNER
 D.L.C. 65

LEGEND

- D.L.C. LINE
- ▨ IRRIGATION AREAS
- () RECORD DATA, C.S. NO. 3729
- TIED S.E. PROPERTY CORNER, 3/4" ROD
- COMPUTED POSITION
- PUMP HOUSE
- △ SPRING LOCATION

THIS SURVEY WAS CONDUCTED USING A TRIMBLE PATHFINDER, REDUCED TO "GRID" THEN ROTATED TO "TRUE" BEARINGS AND GROUND DISTANCES

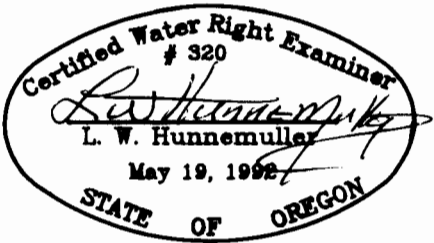
SCALE 1 INCH = 400 FEET



SW PROPERTY
 CORNER

(S 89°52'E, 2862.9')

SE PROPERTY
 CORNER



THIS MAP IS FOR THE PURPOSE OF OBTAINING A WATER RIGHT AND IS NOT INTENDED TO PROVIDE LEGAL DIMENSIONS FOR LOCATION OF PROPERTY BOUNDARIES.

SURVEYED BY:
 L. W. HUNNEMULLER
 3055 N. E. LANCASTER
 CORVALLIS, OR 97330
 PHONE: (541) 757-7614