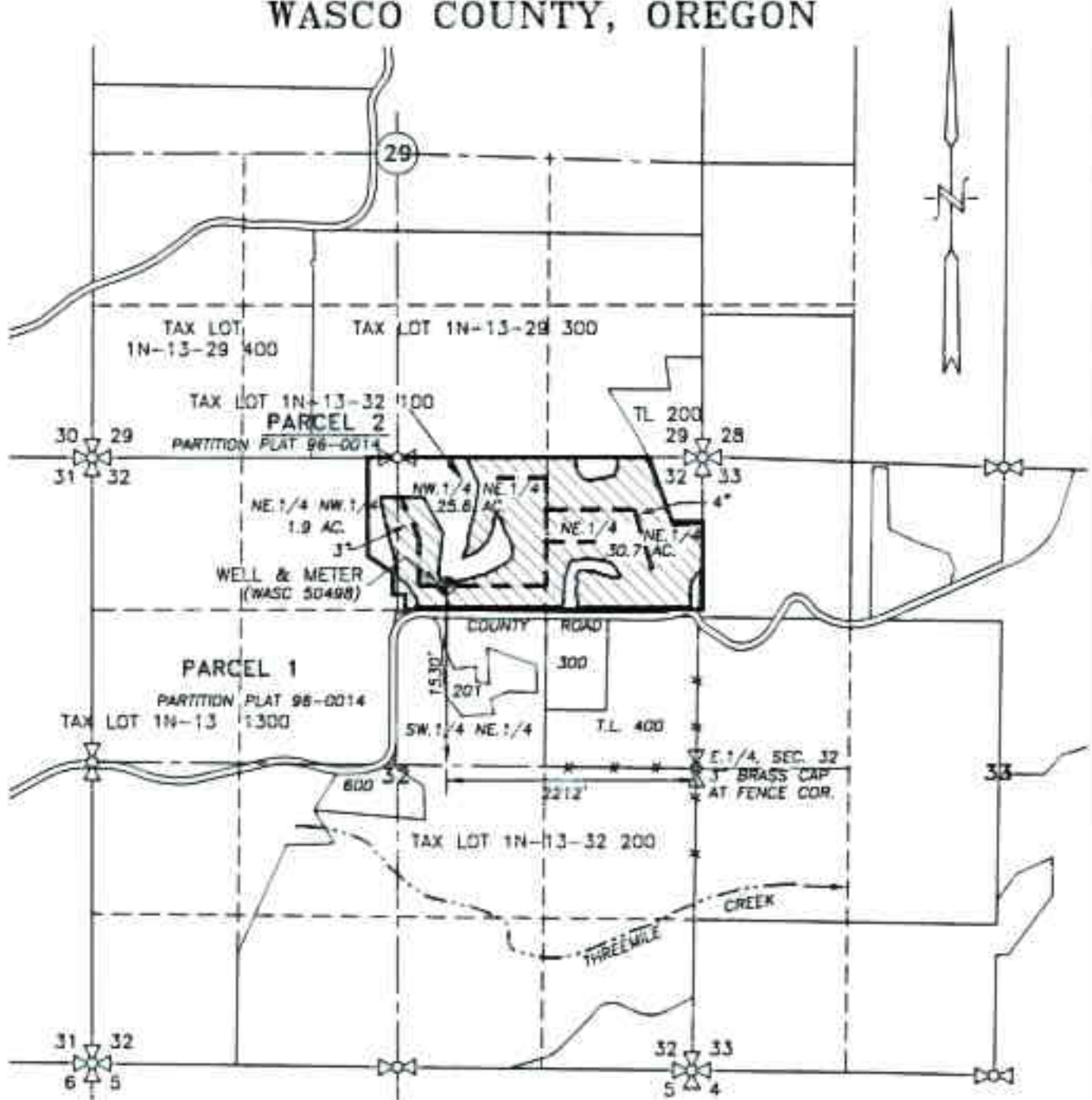


SECTION 32, TWP.1 N., RANGE 13 E. W.M.  
 WASCO COUNTY, OREGON



**LEGEND :**

- ⊙ WELL (WASC 50498): 1530' N. & 2212' W. OF E.1/4, SEC. 32
- ▨ APPLICATION AREA = 58.2 ACRES
- IRRIGATION MAINLINE
- ~ ~ ~ STREAM WITH DIRECTIONAL FLOW

**CLAIM OF BENEFICIAL USE MAP**

SCALE: 1" = 1320'



RECEIVED BY OWRD

OCT 17 2014

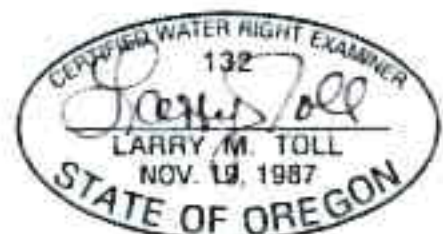
SALEM, OR

TRANSFER No. 8105

IN THE NAME OF:  
ERIK JOHNSEN

DATE: MAY 1, 2014  
 AMENDED NOVEMBER 16, 2014

BY: **TENNESON ENGINEERING CORP.**  
 3775 CRATES WAY  
 THE DALLES, OREGON, 97058  
 PH. 541-296-9177  
 FAX 541-296-8657



EXPIRES: 06/30/2016

**NOTE:**

"THIS MAP IS NOT INTENDED TO PROVIDE DIMENSIONS OR LOCATIONS OF PROPERTY OWNERSHIP LINES."