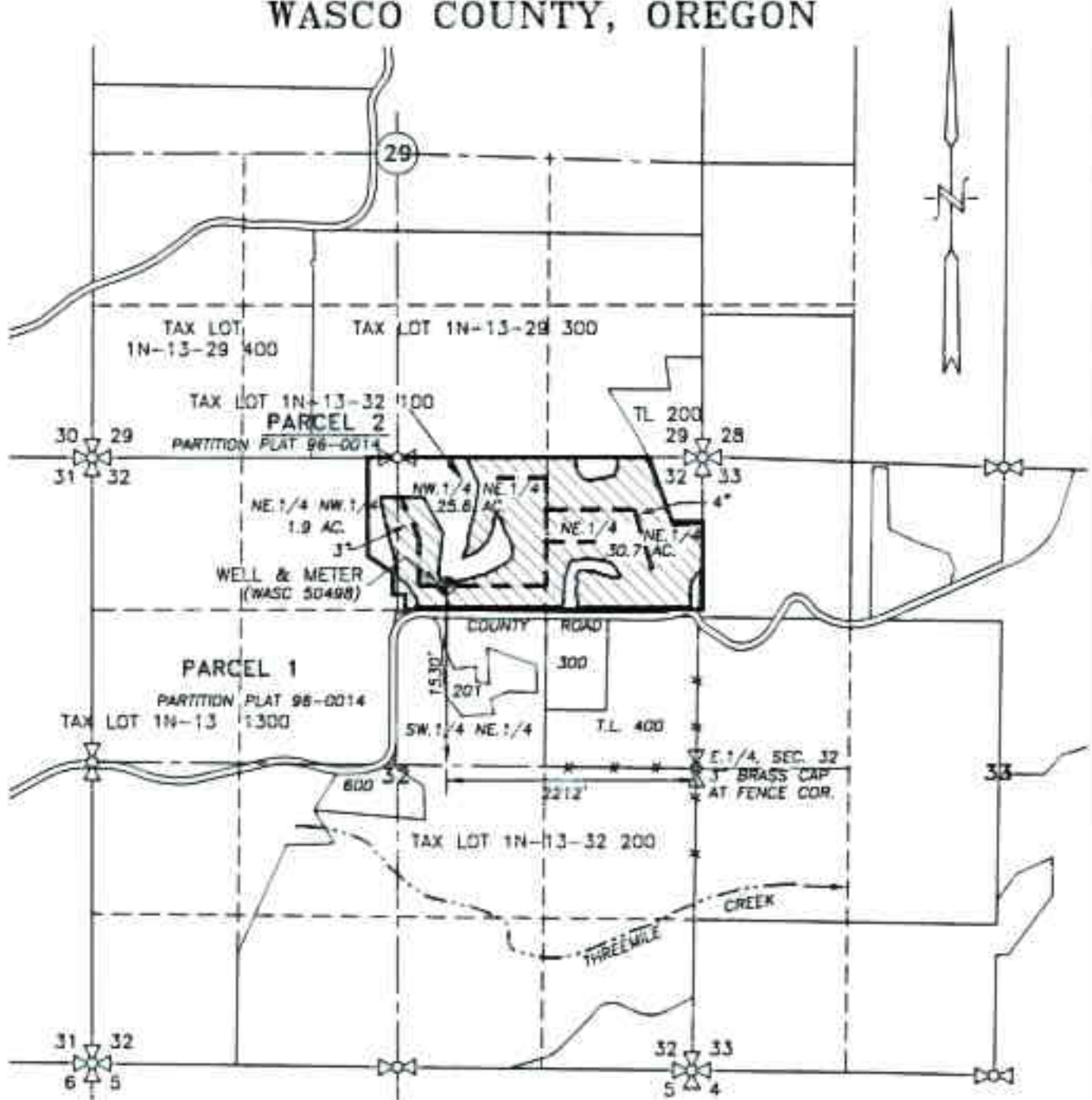






SECTION 32, TWP.1 N., RANGE 13 E. W.M.
WASCO COUNTY, OREGON



LEGEND :

-  WELL (WASC 50498): 1530' N. & 2212' W. OF E.1/4, SEC. 32
-  APPLICATION AREA = 58.2 ACRES
-  IRRIGATION MAINLINE
-  STREAM WITH DIRECTIONAL FLOW

CLAIM OF BENEFICIAL USE MAP

SCALE: 1" = 1320'



RECEIVED BY OWRD

OCT 17 2014

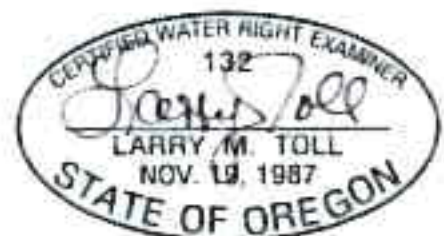
SALEM, OR

TRANSFER No. 8105

IN THE NAME OF:
ERIK JOHNSEN

DATE: MAY 1, 2014
AMENDED NOVEMBER 16, 2014

BY: **TENNESON ENGINEERING CORP.**
3775 CRATES WAY
THE DALLES, OREGON. 97058
PH. 541-296-9177
FAX 541-296-8657



EXPIRES: 06/30/2016

NOTE:

"THIS MAP IS NOT INTENDED TO PROVIDE DIMENSIONS OR LOCATIONS OF PROPERTY OWNERSHIP LINES."