

# FINAL PROOF SURVEY

THOMAS H. LINVILLE D.L.C. 47 & 65  
 T. 12 & 13 S., R. 6 W., W.M.  
 BENTON COUNTY, OREGON  
 APPLICATION FILE NOS. R-75281 & S-75282  
 PERMIT NOS. R-12205 & 53217

IN THE NAME OF  
 DON L. & ALBERTA R. STEWART

NOVEMBER 17, 1997



N.W.  
 CORNER  
 D.L.C. 65

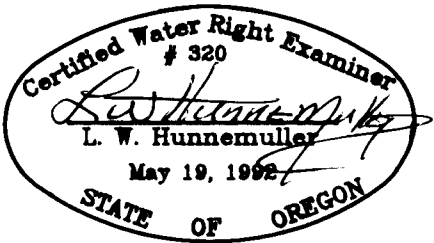
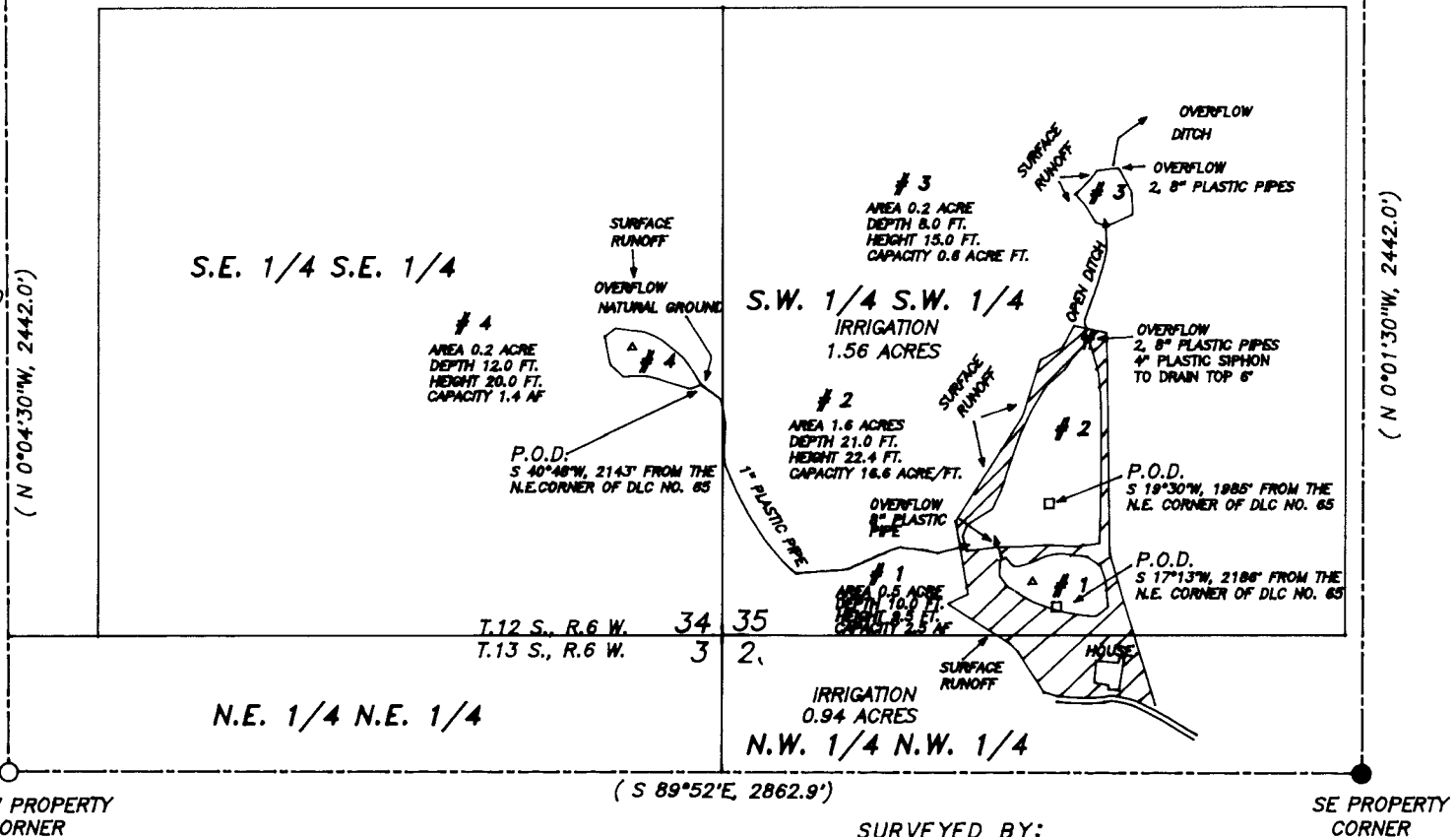
N.E.  
 CORNER  
 D.L.C. 65

## LEGEND

- D.L.C. LINE
- ▨ IRRIGATION AREAS
- ( ) RECORD DATA, C.S. NO. 3729
- TIED S.E. PROPERTY CORNER, 3/4" ROD
- COMPUTED POSITION
- PUMP HOUSE
- △ SPRING LOCATION

THIS SURVEY WAS CONDUCTED USING A TRIMBLE PATHFINDER, REDUCED TO "GRID" THEN ROTATED TO "TRUE" BEARINGS AND GROUND DISTANCES

SCALE 1 INCH = 400 FEET



THIS MAP IS FOR THE PURPOSE OF OBTAINING A WATER RIGHT AND IS NOT INTENDED TO PROVIDE LEGAL DIMENSIONS FOR LOCATION OF PROPERTY BOUNDARIES.

SURVEYED BY:  
 L. W. HUNNEMULLER  
 3055 N. E. LANCASTER  
 CORVALLIS, OR 97330  
 PHONE: (541) 757-7614