

RECEIVED
SEP - 1 1987
WATER RESOURCES DEPT.
SALEM, OREGON

SEP - 1 1987

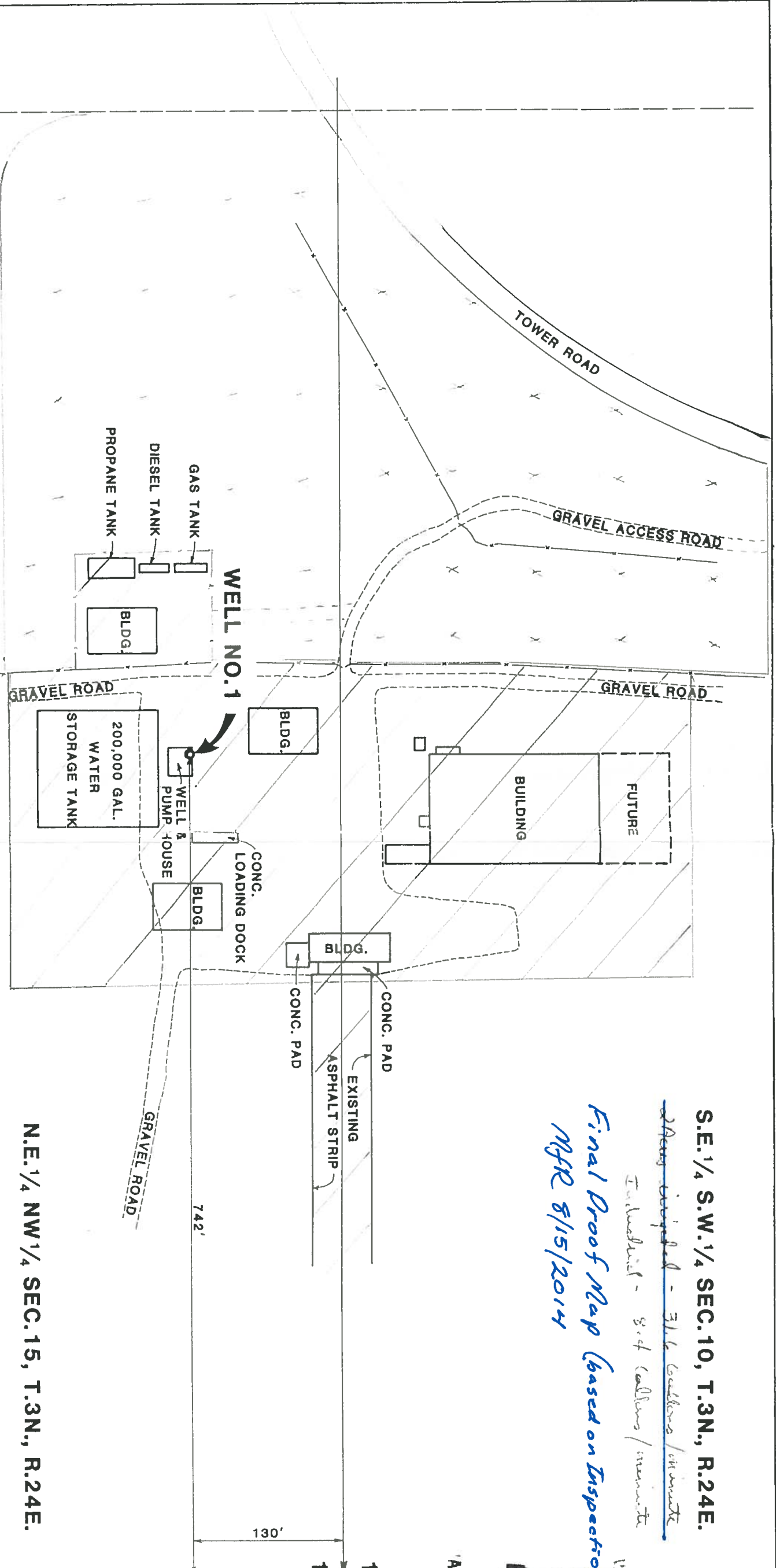
WATER RESOURCES DEPT.
SALEM, OREGON

RECEIVED
OCT 22 1987
WATER RESOURCES DEPT.
SALEM, OREGON

S.E. 1/4 S.W. 1/4 SEC. 10, T.3N., R.24E.

*Area occupied - 3 1/2 Gallons / minute
Included - 8.4 Gallons / minute*

*Final Proof Map (based on Inspection)
MFR 8/15/2014*

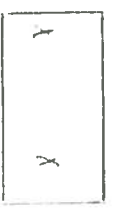


N.E. 1/4 NW 1/4 SEC. 15, T.3N., R.24E.

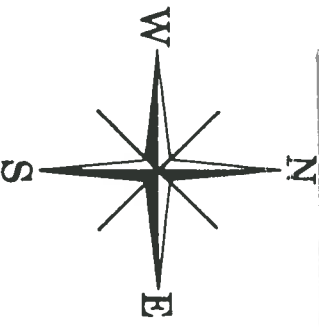
*3 Acres Irrigated 474 Gallons / minute
Included - 12.6 Gal / minute*



INDUSTRIAL



*No Irrigation
Developed*
NO IRRIGATION



FEB 9 1987

MAP PREPARED BY: SHANNON & WILSON, INC.
WATER RESOURCES DEPT.
SALEM, OREGON
Geotechnical Consultants
Portland, Oregon

Application No. G-11606
Permit No. G10775

BOEING AGRI-INDUSTRIAL CO. BOARDMAN, OREGON
BOEING ANTENNA RANGE WELL NO. 1
AUGUST, 1986