

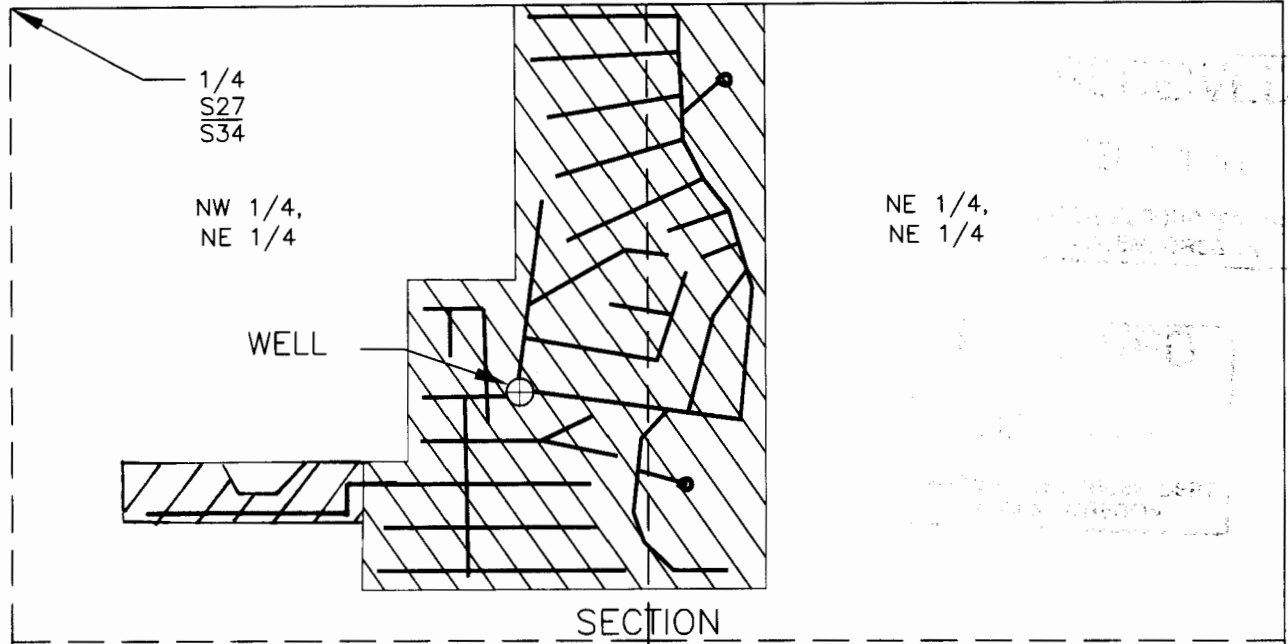
FINAL PROOF SURVEY
AND
CLAIM OF BENEFICIAL USE

LOCATED WITHIN
NE 1/4, NE 1/4 AND NW 1/4, NE 1/4 SECTION 34, T.2N., R.32E., W.M.,
UMATILLA COUNTY, OREGON

APPLICATION G-14049

APPLICANT: STEVE HALE

PERMIT G-12822

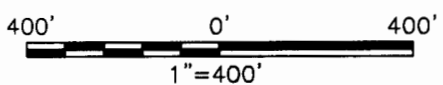


LEGEND

- SECTION LINE
- 1/16TH LINE
- WELL
- BURIED 3" PVC LINES W/SPRINKLERS
- RISERS
- = AREA BENEFICIALLY IRRIGATED-PRIMARY
- = SUPPLEMENTAL IRRIGATION

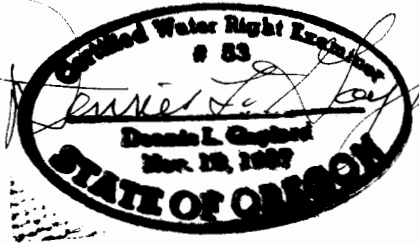
CORNER TIE:
THE WELL IS WITHIN THE NW 1/4, NE 1/4, SECTION 34,
AND IS 805' SOUTH AND 1,055' EAST OF THE NORTH 1/4 CORNER OF SAID SECTION 34.

AREA BENEFICIALLY IRRIGATED: (PRIMARY)
NE 1/4, NE 1/4, S34 = 6.82 ACRES
NW 1/4, NE 1/4, S34 = 11.55 ACRES
SUPPLEMENTAL:
NW 1/4, NE 1/4, S34 = 1.18 ACRES
TOTAL: 19.55 ACRES



REVISED FEB 5, 2005

THIS MAP IS PREPARED FOR THE EXPRESS PURPOSE TO SHOW WATER APPROPRIATION AND USE. IT IS NOT INTENDED TO SHOW OR LOCATE PROPERTY OWNERSHIP LINES.



DENNIS L. GAYLORD,
CWRE
71614 S.W. LAKE DRIVE
PENDLETON, OR 97801
(541)-276-6260
SEPTEMBER, 2003

©

Renews 6/30/2005

Mill Creek Drafting