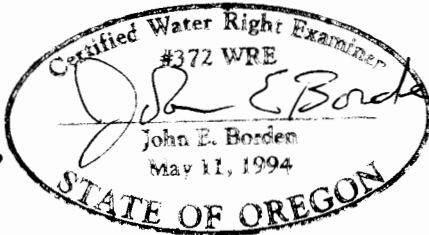


N 1/4 COR

T. 6S. R2W. W.M.

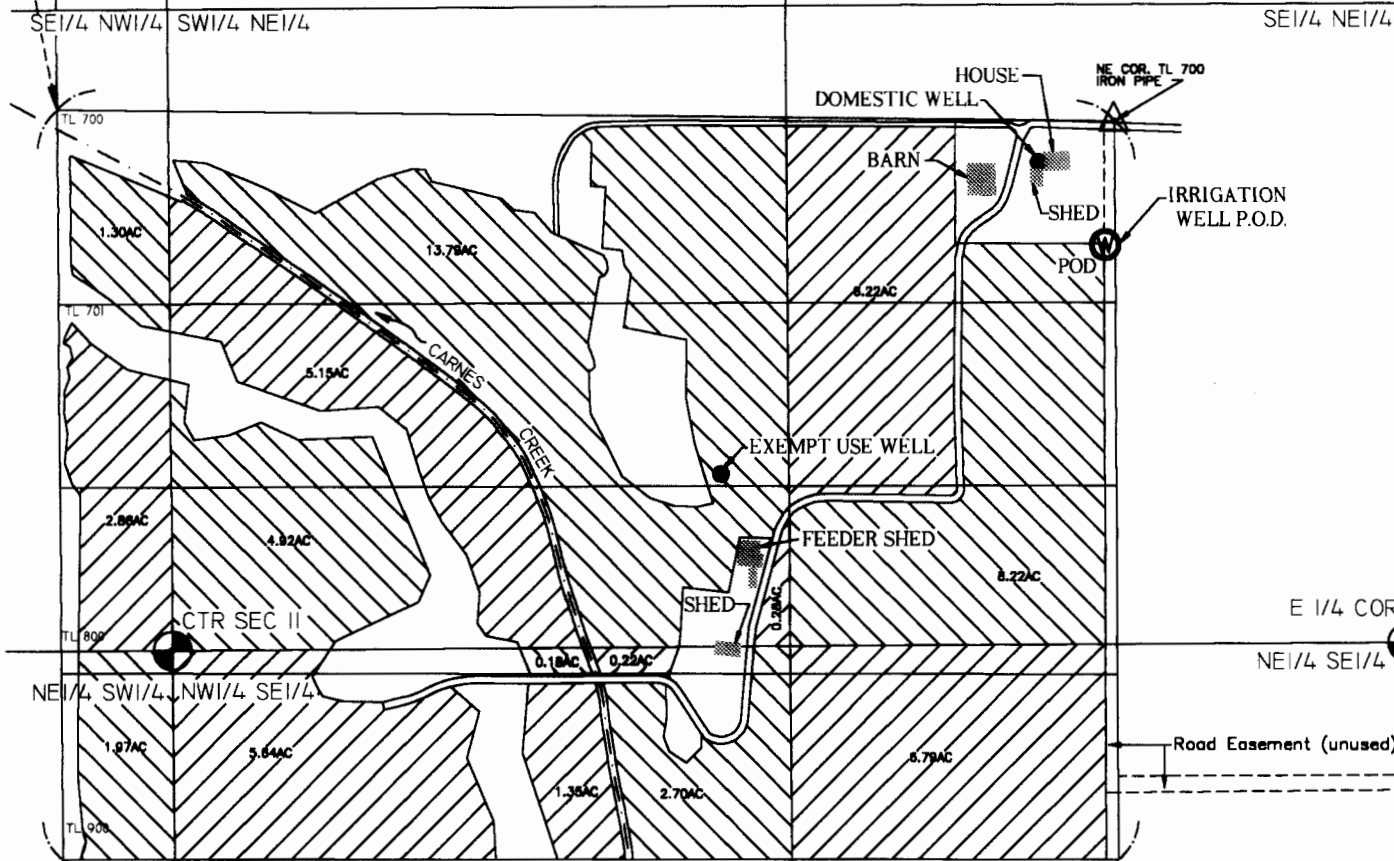


P.O.U. -- PLACE OF IRRIGATION USE  
WATER USE ACREAGE BY 1/4 1/4

SW 1/4 NE 1/4	-	24.14 AC
SE 1/4 NE 1/4	-	14.44 AC
SE 1/4 NW 1/4	-	4.16 AC
NE 1/4 SW 1/4	-	1.97 AC
NW 1/4 SE 1/4	-	10.09 AC
NE 1/4 SE 1/4	-	6.79 AC
TOTAL =		61.59 AC

SCALE: 1"=400'

1898.03 FT



Irrigation Well Location (P.O.D.) 2151 ft. S. and 2225 ft. E. from NW Cor. Webb D.L.C. No. 56  
or 253 ft. S. and 22 ft. W. from NE Cor. Parcel IV, Tax Lot 700

**FINAL PROOF SURVEY**  
UNDER

Application No. G-14115, Permit No. G-12932  
In The Name Of  
**VINCENT STEINKAMP**  
Surveyed July 31, 2000, by John E. Borden

1833.61 FT

SW COR  
J. WEBB  
DLC NO. 56