

RECEIVED

SEP 26 1994
WATER RESOURCES DEPT.
SALEM, OREGON

TOWNSHIP 15 SOUTH

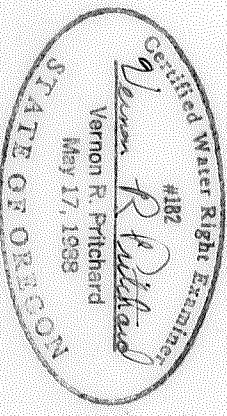
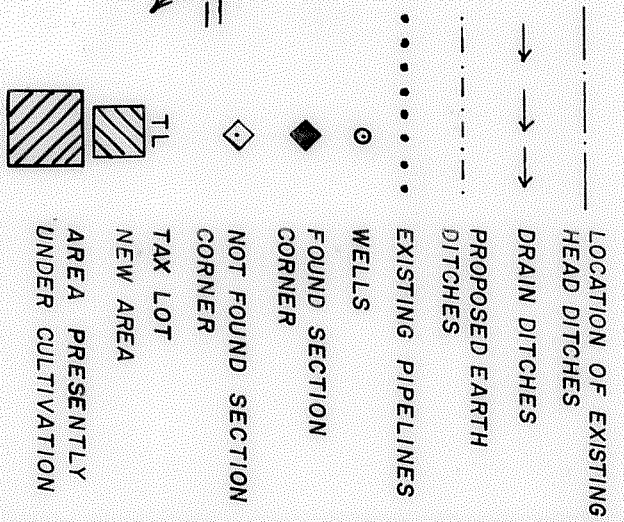
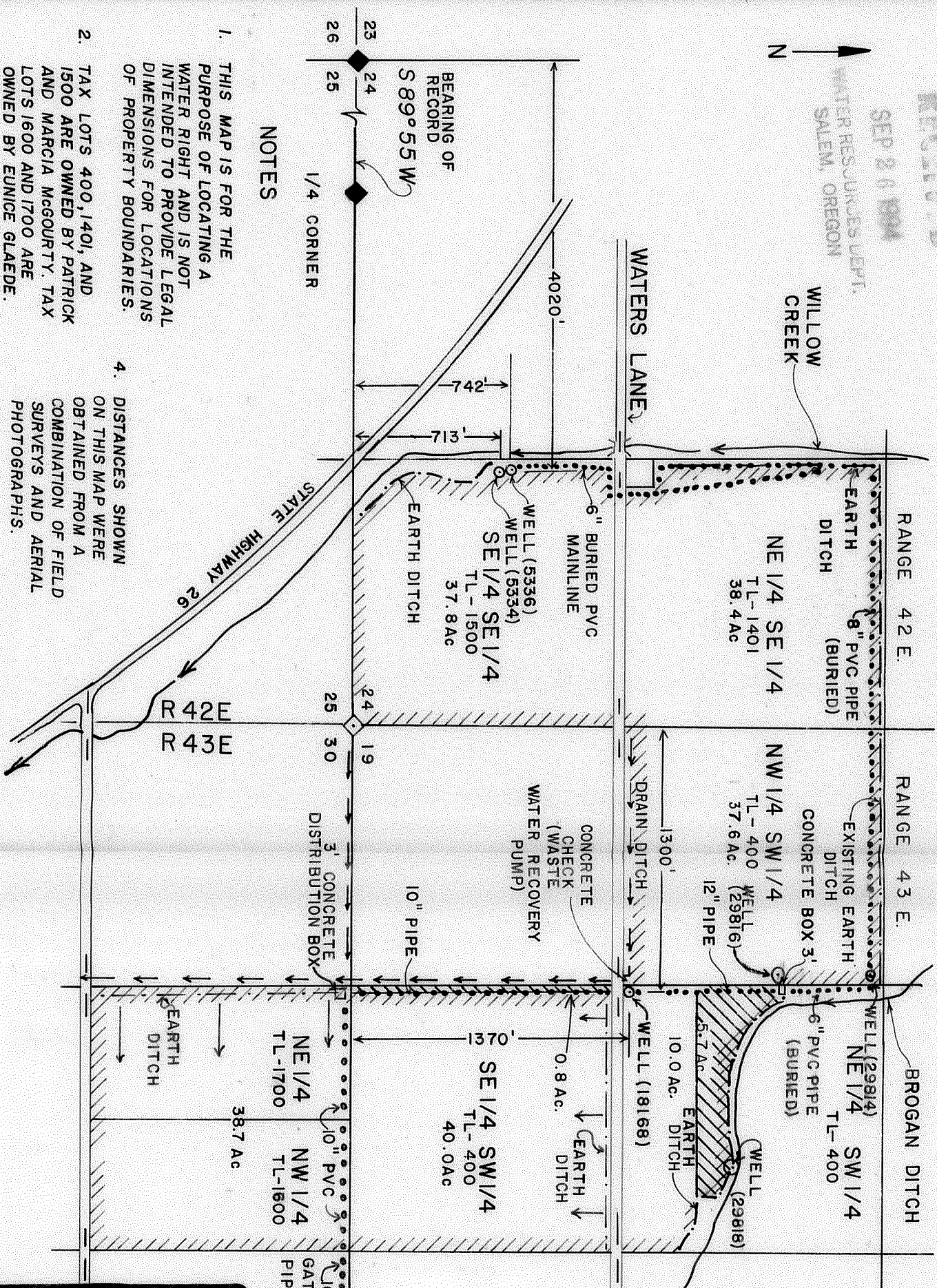
IRRIGATION SYSTEM KEY



1. THIS MAP IS FOR THE PURPOSE OF LOCATING A WATER RIGHT AND IS NOT INTENDED TO PROVIDE LEGAL DIMENSIONS FOR LOCATIONS OF PROPERTY BOUNDARIES.
2. TAX LOTS 400, 1401, AND 1500 ARE OWNED BY PATRICK AND MARCIA MCGOURTY. TAX LOTS 1600 AND 1700 ARE OWNED BY EUNICE GLAEDE.
3. EARTH DITCHES HAVE A 22" BOTTOM WIDTH AND A 12-14" DEPTH.

4. DISTANCES SHOWN ON THIS MAP WERE OBTAINED FROM A COMBINATION OF FIELD SURVEYS AND AERIAL PHOTOGRAPHS.

NOTES



VERN PRITCHARD 473-3612
P.O. BOX 134
VALE, OREGON 97918

PATRICK MCGOURTY
FINAL PROOF SURVEY

Drawn <i>H. Pritchard</i>	SCALE 1" = 660'
Approved <i>Vernon R. Pritchard</i>	DWG NO. 009
DATE SEPT 18, 1994	SHEET 1 OF 1