

files G-14370; K-81403, 81462



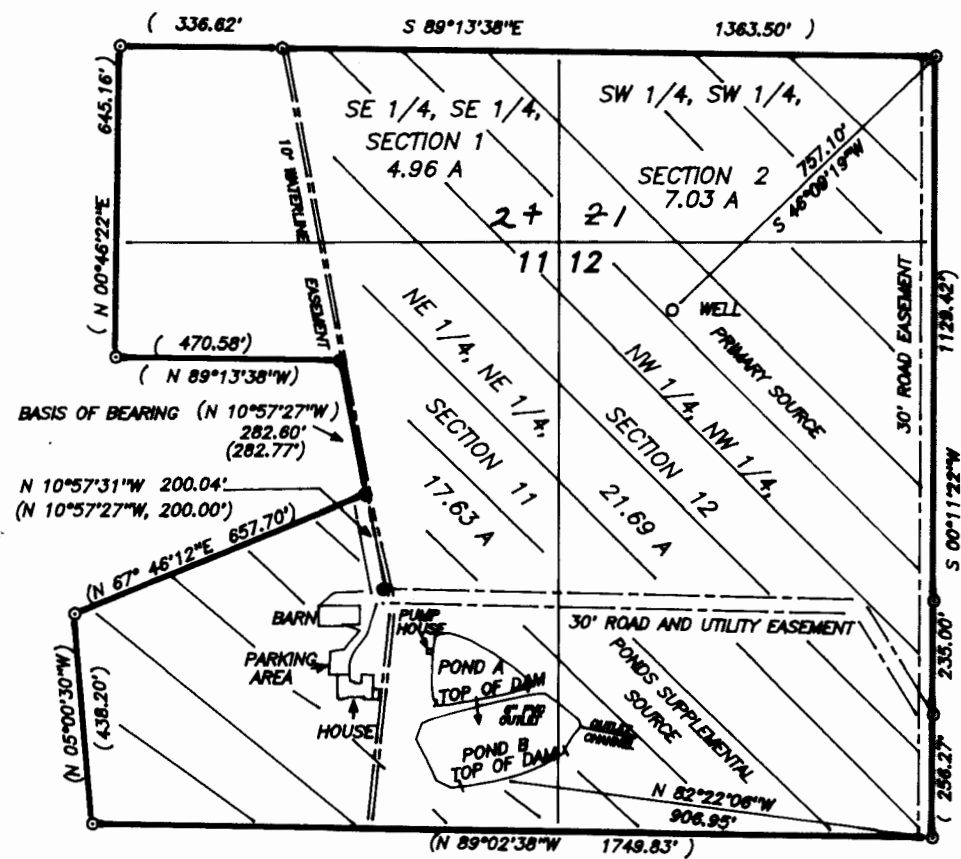
FINAL PROOF SURVEY
FOR
MARVIN RAY STRAUGHAN
TAX LOT 107
SE 1/4, SE 1/4, SEC. 1; SW 1/4, SW 1/4, SEC. 2;
NE 1/4, NE 1/4, SEC. 11; NW 1/4, NW 1/4, SEC. 12
T.9 S.; R.5 W.; W.M.
POLK COUNTY, OREGON
JULY 17, 2002

RECEIVED

AUG 05 2002

WATER RESOURCES DEPT
SALEM, OREGON

THIS MAP IS FOR THE PURPOSE OF OBTAINING A WATER RIGHT AND IS NOT INTENDED TO PROVIDE LEGAL DIMENSIONS FOR LOCATION OF PROPERTY BOUNDARIES.



LEGEND



AREA TO BE IRRIGATED

MONUMENT FOUND AND TIED
5/8" IRON ROD WITH PLASTIC
CAP MARKED "LS 1628"

MONUMENT BASED ON C.S.11542A

RECORD DATA

EASEMENTS OF RECORD

SCALE 1 INCH = 400 FEET

SURVEYED BY:
L. W. HUNNEMULLER
3055 N. E. LANCASTER
CORVALLIS, OR 97330
PHONE: (541) 757-7614

DAM:

	POND A	POND B	TOTAL
MAXIMUM HEIGHT	8 FEET	8 FEET	
TOP WIDTH	8 FEET	8 FEET	
AREA OF POND	0.46 ACRE	1.06 ACRES	1.52 ACRES
MAXIMUM DEPTH	9 FEET	8 FEET	
STORAGE CAPACITY	1.88 A.F.	3.34 A.F.	5.00 ACRE FEET

TOTAL ACREAGE TO BE IRRIGATED 51.31 ACRES



This map has been updated to reflect the correct sections. M012-31-4 LWRD