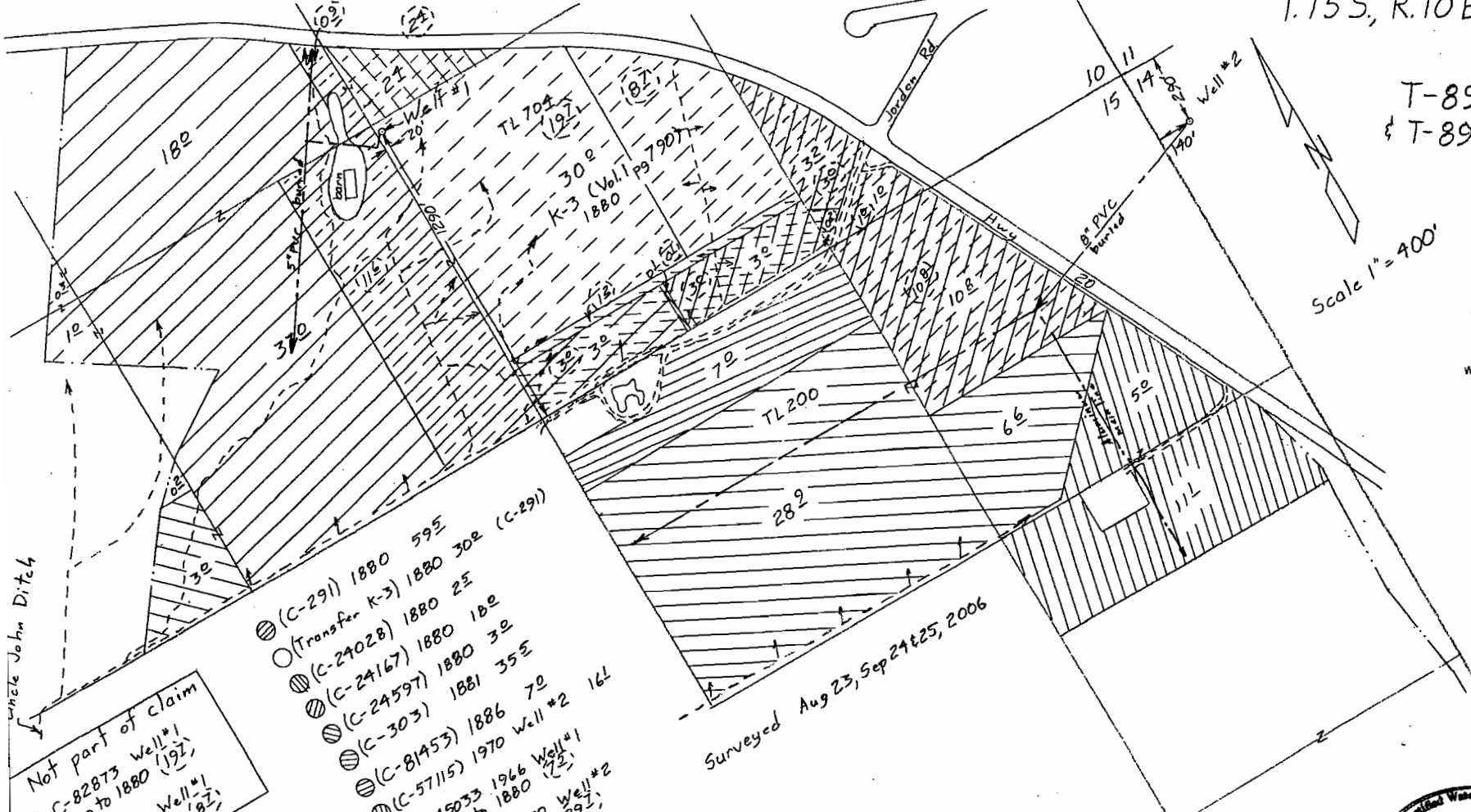


T.15S, R.10E, W.M.

T-8900
& T-8902

Scale 1" = 400'

RECEIVED
MAR 23 2008
WATER RESOURCES DEPT
SALEM, OREGON

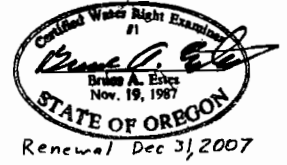
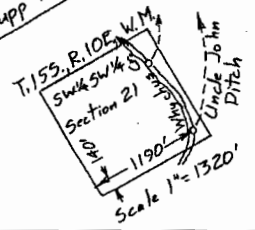


- ⊙ (C-291) 1880 59E
- ⊙ (Transfer K-3) 1880 30E (C-291)
- ⊙ (C-24028) 1880 2E
- ⊙ (C-24167) 1880 18E
- ⊙ (C-24597) 1880 3E
- ⊙ (C-303) 1881 35E
- ⊙ (C-81453) 1886 7E
- ⊙ (C-57115) 1970 Well #2 16L
- ⊙ C-45033 1966 Well #1
- ⊙ Supp to 1880 (29)
- ⊙ C-57115 1970 Well #2
- ⊙ Supp to 1880 (29)

Surveyed Aug 23, Sep 24 & 25, 2006

Claim of Beneficial Use Map for City of Sisters

Not part of claim
⊙ C-82875 Well #1
supp to 1880 (192)
⊙ C-82875 Well #1
supp to 1880 (82)



This map is for the purpose of locating a water right only and has no intent to provide legal dimensions or the location of property lines.

ESTES SURVEYS, LLC
 -PO Box 47640, Salem, OR 97306-7619, (503) 565-7593
 80382 Arnold Rd, Bend, OR 97702, (541) 382-7391

Amended 28 Apr 08