

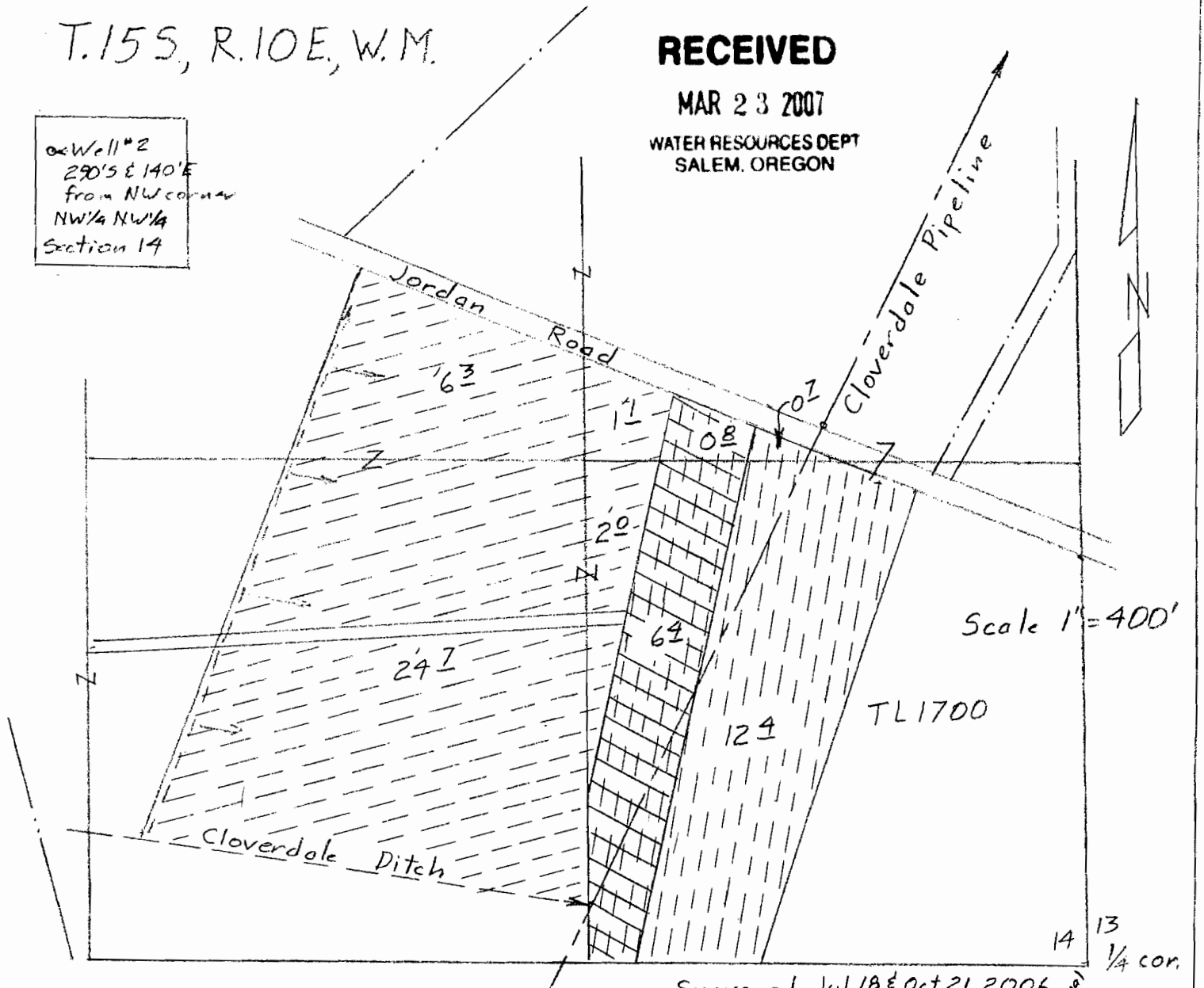
T.15S, R.10E, W.M.

RECEIVED

MAR 23 2007

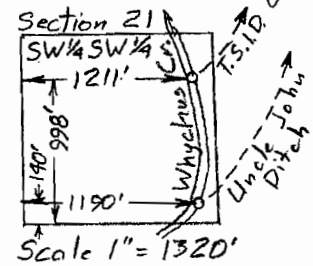
WATER RESOURCES DEPT
SALEM, OREGON

Well #2
290'S & 140'E
from NW corner
NW 1/4 NW 1/4
Section 14

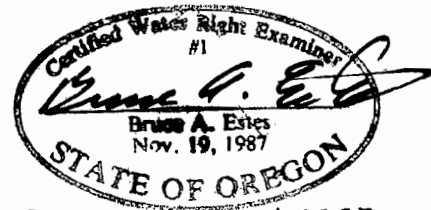


- 1 ⊖ C-81454 1900 34 1/2 acres
- ⊕ C-57115 1970 (well #2) 34 1/2 acres Supp
- ⊖ C-74135 1903 20 3/4 (not part of transfer)
- 1 ⊗ C-57115 1970 (well #2)
7 1/2 acres supp to 1903

Surveyed Jul 18 & Oct 21, 2006



Claim of Beneficial Use Map
for
SKI POND RANCH, LLC



Renewal Dec 31, 2007

T-8900
& T-8902

This map is for the purpose of locating a water right only and has no intent to provide legal dimensions or the locator of property lines.

ESTES SURVEYS, LLC

PO Box 17510 Salem, OR 97306-7519 (503) 585-7593	60382 Arnold Rd Bend, OR 97702 (541) 382-7391
--	---

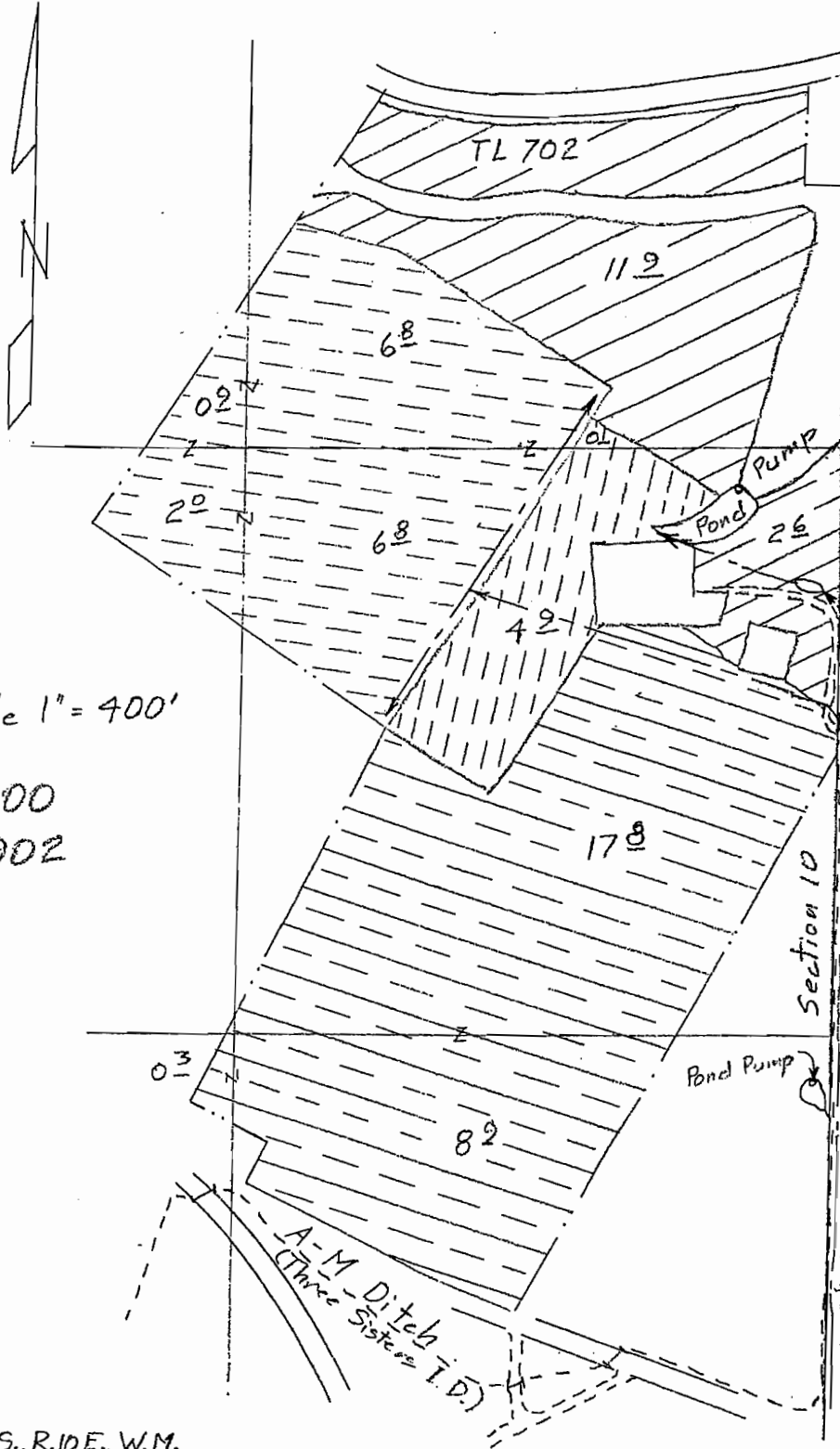
T.15S., R.10E., W.M.

RECEIVED

MAR 23 2007

WATER RESOURCES DIVISION
SALEM, OREGON

Claim of
Beneficial Use Map
for
Armestoy Ranch



E 1/4 corner of section 10

- ⊖ C-81454 1900 16 1/2 ac.
- ⊖ C-57115 supp. 16 1/2 ac.
- ⊖ C-74135 1903 5 1/2 ac.
- ⊖ C-982 1908 27 1/2 ac.
- ⊖ C-2056 1912 14 1/2 ac.

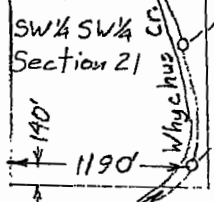
Scale 1" = 400'

T-8900
& T-8902

Surveyed Aug 23 &
Dec 29, 2006

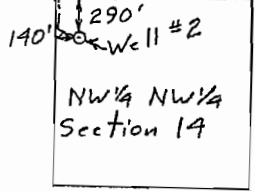
This map is for the purpose of
locating a water right only
and has no intent to provide
legal dimensions or the location
of property lines.

T.15S., R.10E., W.M.

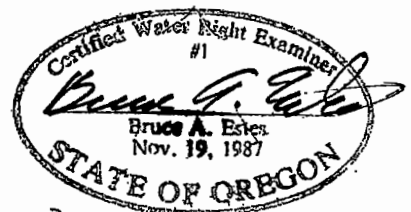


Scale 1" = 1320'

T.15S., R.10E., W.M.



Scale 1" = 1320'



Renewal Dec. 31, 2007

ESTES SURVEYS, LLC
 PO Box 17519
 Salem, OR 97306-7519 (503) 585-7593
 60382 Arnold Rd
 Bend, OR 97702 (541) 382-7391