

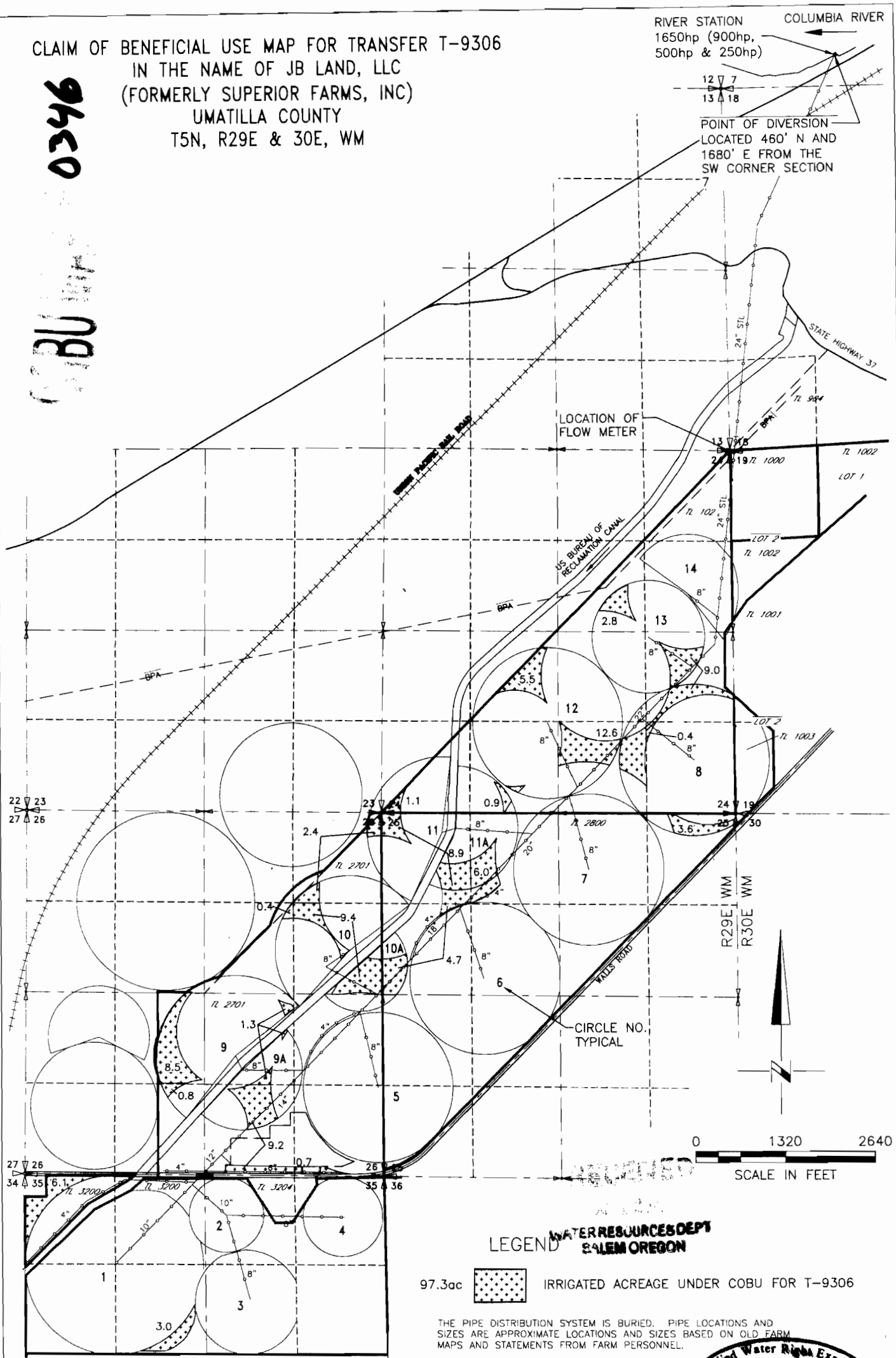
**CLAIM OF BENEFICIAL USE MAP FOR TRANSFER T-9306
IN THE NAME OF JB LAND, LLC
(FORMERLY SUPERIOR FARMS, INC)
UMATILLA COUNTY
T5N, R29E & 30E, WM**

RIVER STATION
1650hp (900hp,
500hp & 250hp)

COLUMBIA RIVER

POINT OF DIVERSION
LOCATED 460' N AND
1680' E FROM THE
SW CORNER SECTION

0346
COBU



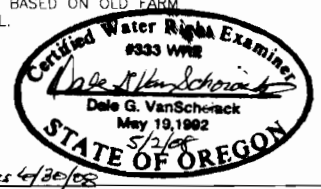
LEGEND
WATER RESOURCES DEPT
SALEM OREGON

97.3ac  IRRIGATED ACREAGE UNDER COBU FOR T-9306

THE PIPE DISTRIBUTION SYSTEM IS BURIED. PIPE LOCATIONS AND SIZES ARE APPROXIMATE LOCATIONS AND SIZES BASED ON OLD FARM MAPS AND STATEMENTS FROM FARM PERSONNEL.

NOTE:
 THE PURPOSE OF THIS MAP IS TO IDENTIFY THE APPROXIMATE LOCATION OF THE WATER RIGHT. IT IS NOT INTENDED TO PROVIDE INFORMATION RELATIVE TO THE LOCATION OF PROPERTY OWNERSHIP BOUNDARY LINES.

DRAWING: F:\30-08-016 - Porfly Water Rights Consulting\--00 Misc Engineering\Cod\SUPERIOR FARMS\3522155COB.DWG
 PRINTED BY: rwillard on 04/22/08 12:33 PM



Expires 4/20/08