

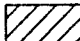


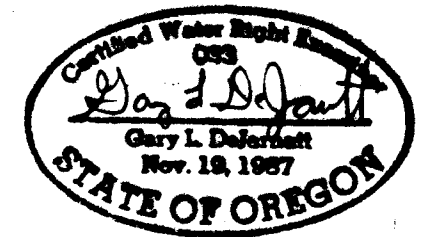
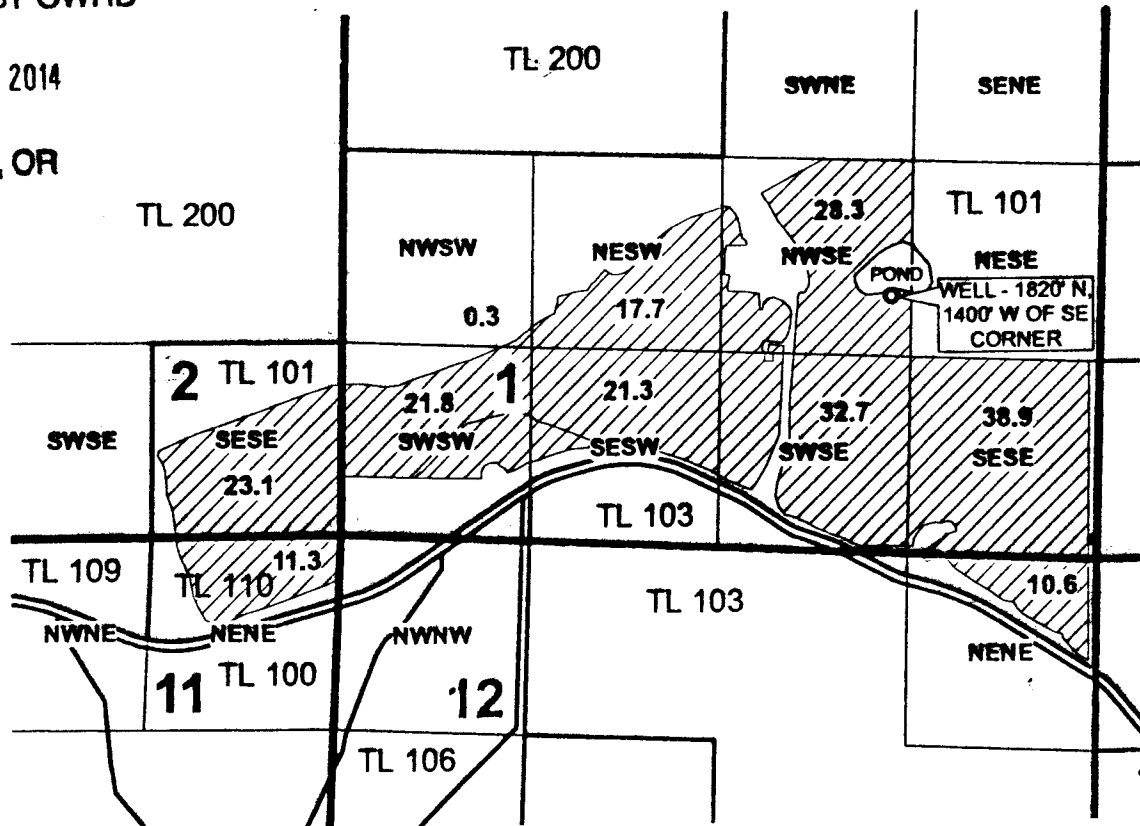
DESCHUTES COUNTY, OREGON
T 14 S, R 11 E, WM

-  TAXLOT BOUNDARIES
-  SECTION LINES
-  76812 (S) GROUND WATER SUPPLEMENTAL

RECEIVED BY OWRD

AUG 20 2014

SALEM, OR



RENEWAL DATE: 12-31-2015

11879



**WATER RIGHT REDESCRIPTION MAP
 FOR LONG HOLLOW RANCH**

CERTIFICATE 76812

NOTE: THIS MAP IS NOT INTENDED TO
 PROVIDE LEGAL DIMENSIONS OR LOCATIONS
 OF PROPERTY OWNERSHIP LINES.

JOB # 13056

JULY 16, 2014

WATER RIGHT SERVICES, LLC

PO BOX 1830, BEND, OR 97709

CCB # 197121 WWW.OREGONWATER.US

541-389-2837

JOHNSHORT@USA.COM