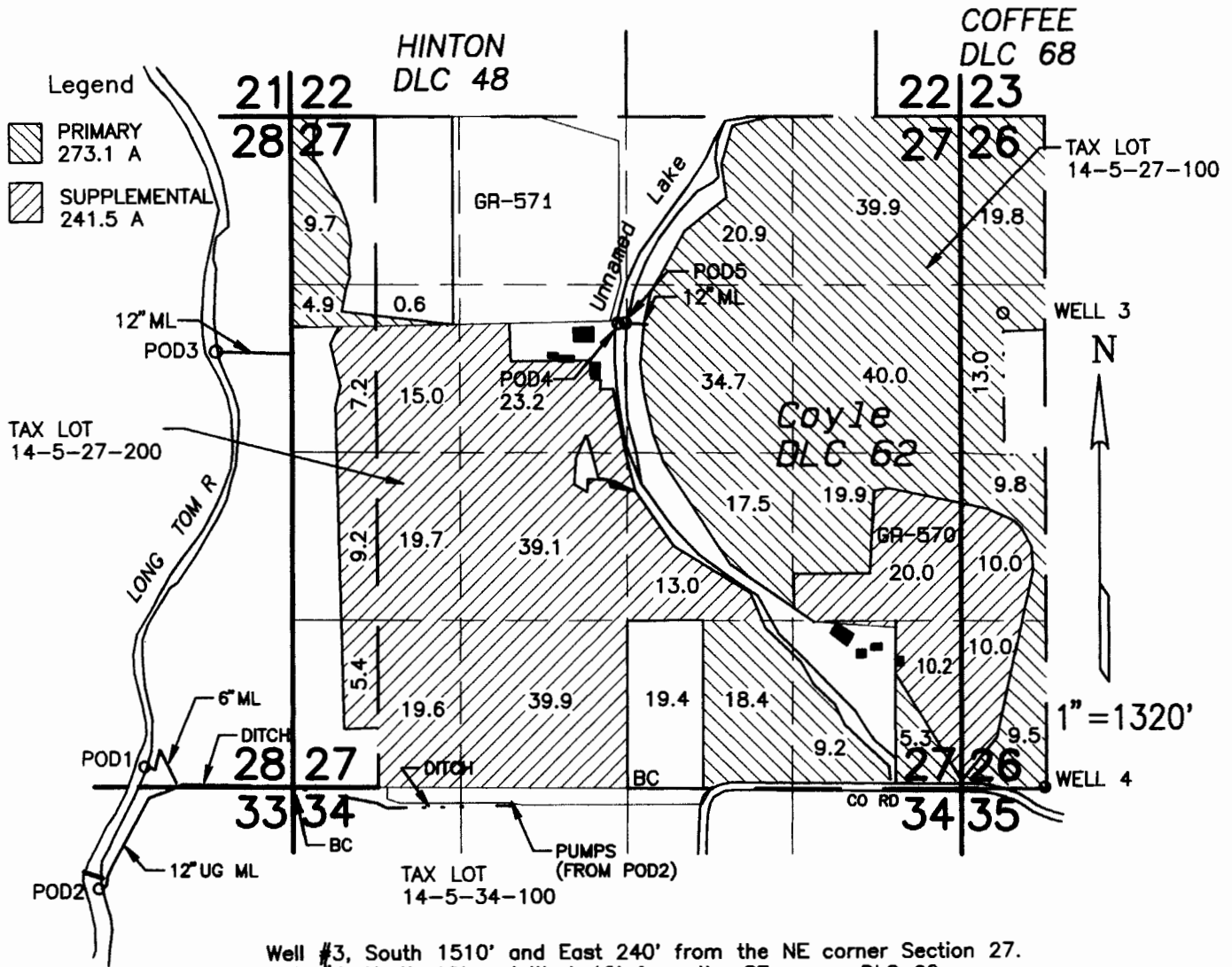


T14S, R5W, W.M.



Well #3, South 1510' and East 240' from the NE corner Section 27.
 Well #4, North 10' and West 12' from the SE corner DLC 62.

CLAIM OF BENEFICIAL USE MAP

IN THE NAME OF
HUBBARD FARMS INC
 APPLICATION G-12631 PERMIT G-13284

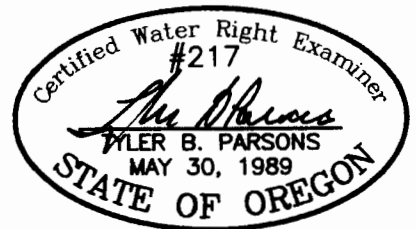
Prepared September 25, 2002
 PARSONS SURVEYING
 1915 S.E. Stone St.
 Corvallis, OR 97333
 (541) 752-7515
 Project No. 0217

This map is for location of Water Right ONLY and does not constitute a boundary survey.

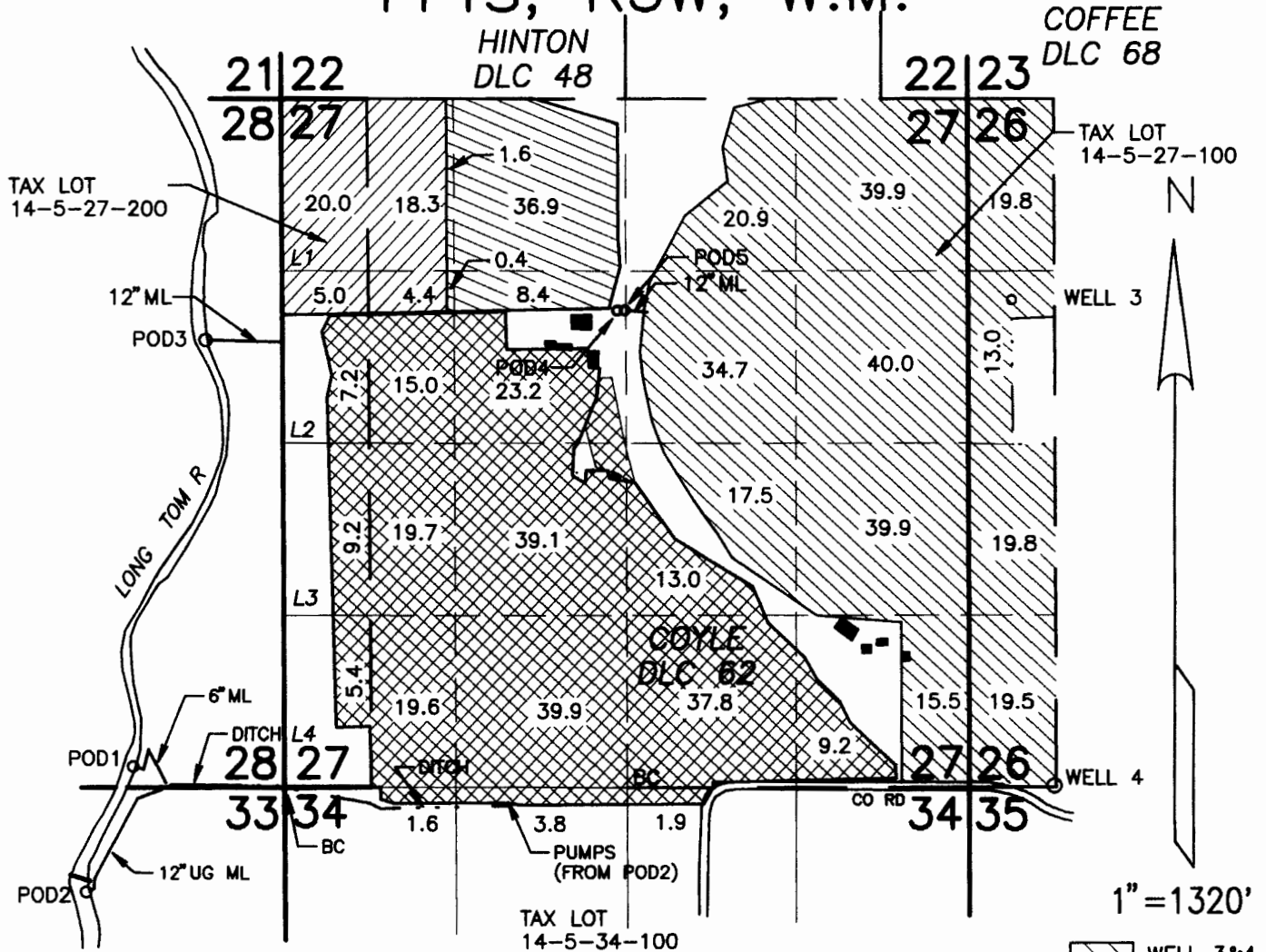
MAP 1 OF 2

EXP: 12/31/02


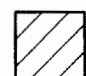

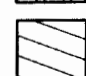
RECEIVED
 OCT 03 2002
 WATER RESOURCES DEPT.
 SALEM, OREGON



T14S, R5W, W.M.



- POD 1, NORTH 160 FT & WEST 1140 FT FROM SW CORNER SEC 27 (NOT IN USE)
- POD 2, SOUTH 720 FT & WEST 1490 FT FROM SW CORNER SEC 27
- POD 3, SOUTH 1850 FT & WEST 600 FT FROM NW CORNER SEC 27
- POD 4, NORTH 3670 FT & WEST 2700 FT FROM SE CORNER SEC 27
- POD 5, NORTH 3670 FT & WEST 2650 FT FROM SE CORNER SEC 27
- WELL 3, SOUTH 1510 FT & EAST 240 FT FROM NE CORNER SEC 27
- WELL 4, NORTH 10 FT & WEST 12 FT FROM SE CORNER DLC 62

-  WELL 3&4
G-13284
280.5 AC
-  POD3
53304
47.7 AC
-  POD2
53304
245.6 AC
-  POD4
53304
47.3 AC

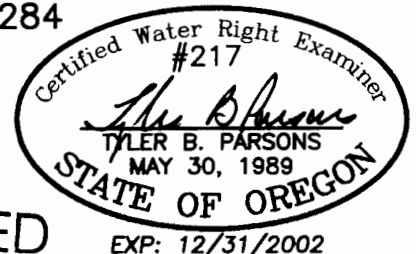
WATER USAGE SOURCES - 2002 CLAIM OF BENEFICIAL USE MAP

IN THE NAME OF
HUBBARD FARMS INC

APPLICATION S-71790 PERMIT 53304
APPLICATION G-12631 PERMIT G-13284
TRANSFER T-8104
TRANSFER T-8856

Prepared September 25, 2002
PARSONS SURVEYING
1915 S.E. Stone St.
Corvallis, OR 97333
(541) 752-7515
Project No. 0217

This map is for location of Water Right ONLY and does not constitute a boundary survey.



MAP 2 RECEIVED

OCT 03 2002

WATER RESOURCES DEPT.
SALEM, OREGON