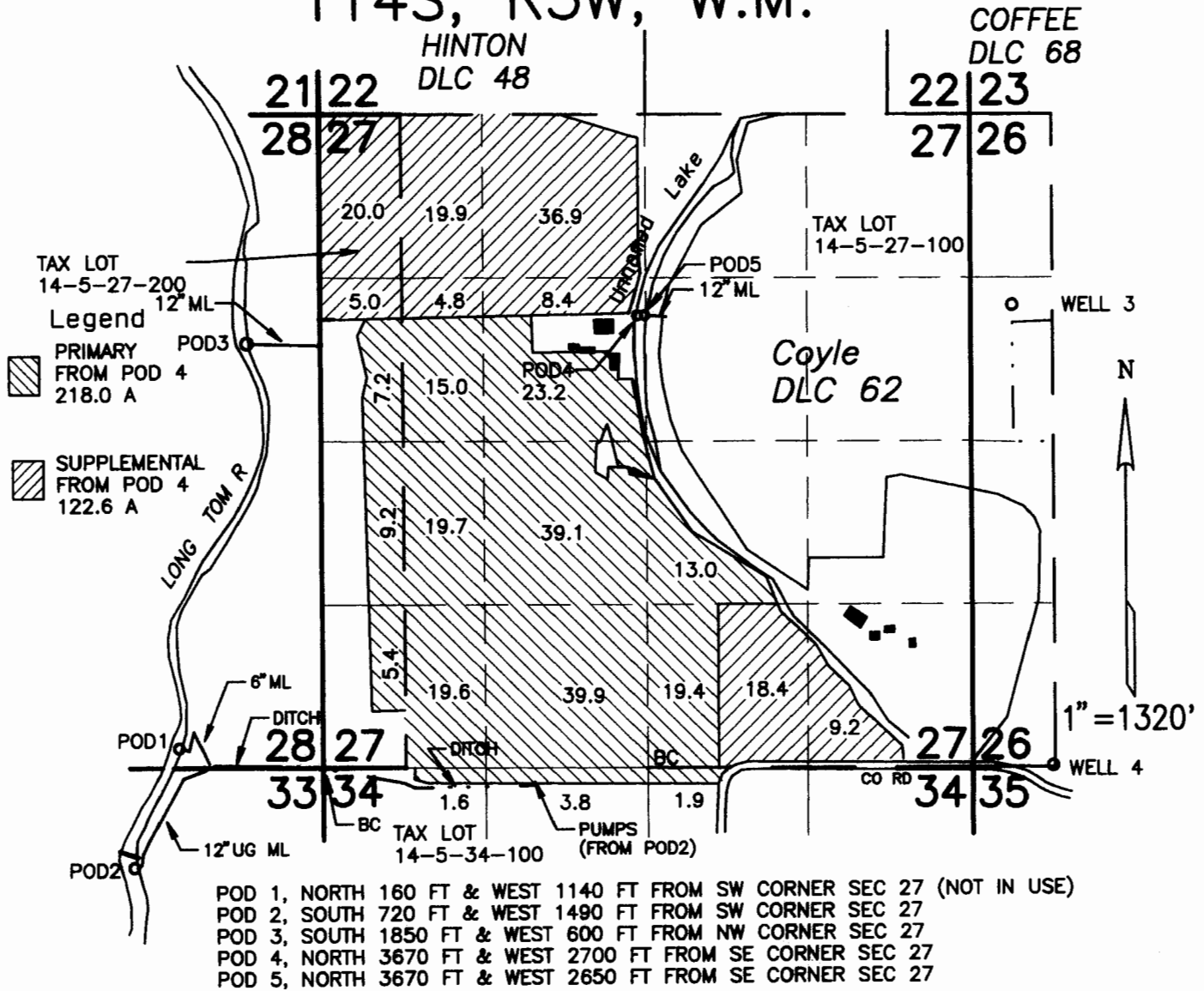


RECEIVED
 OCT 03 2002
 WATER RESOURCES DEPT.
 SALEM, OREGON

T14S, R5W, W.M.

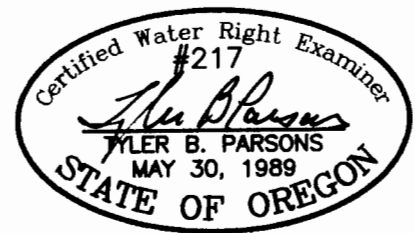


- POD 1, NORTH 160 FT & WEST 1140 FT FROM SW CORNER SEC 27 (NOT IN USE)
- POD 2, SOUTH 720 FT & WEST 1490 FT FROM SW CORNER SEC 27
- POD 3, SOUTH 1850 FT & WEST 600 FT FROM NW CORNER SEC 27
- POD 4, NORTH 3670 FT & WEST 2700 FT FROM SE CORNER SEC 27
- POD 5, NORTH 3670 FT & WEST 2650 FT FROM SE CORNER SEC 27

CLAIM OF BENEFICIAL USE MAP

IN THE NAME OF
HUBBARD FARMS INC
 APPLICATION S-71790 PERMIT 53304
 TRANSFER T-8104 TRANSFER T-8856

Prepared September 25, 2002
 PARSONS SURVEYING
 1915 S.E. Stone St.
 Corvallis, OR 97333
 (541) 752-7515
 Project No. 0217



This map is for location of Water Right ONLY and does not constitute a boundary survey.

MAP 1 OF 3

EXP: 12/31/02

RECEIVED

OCT 03 2002

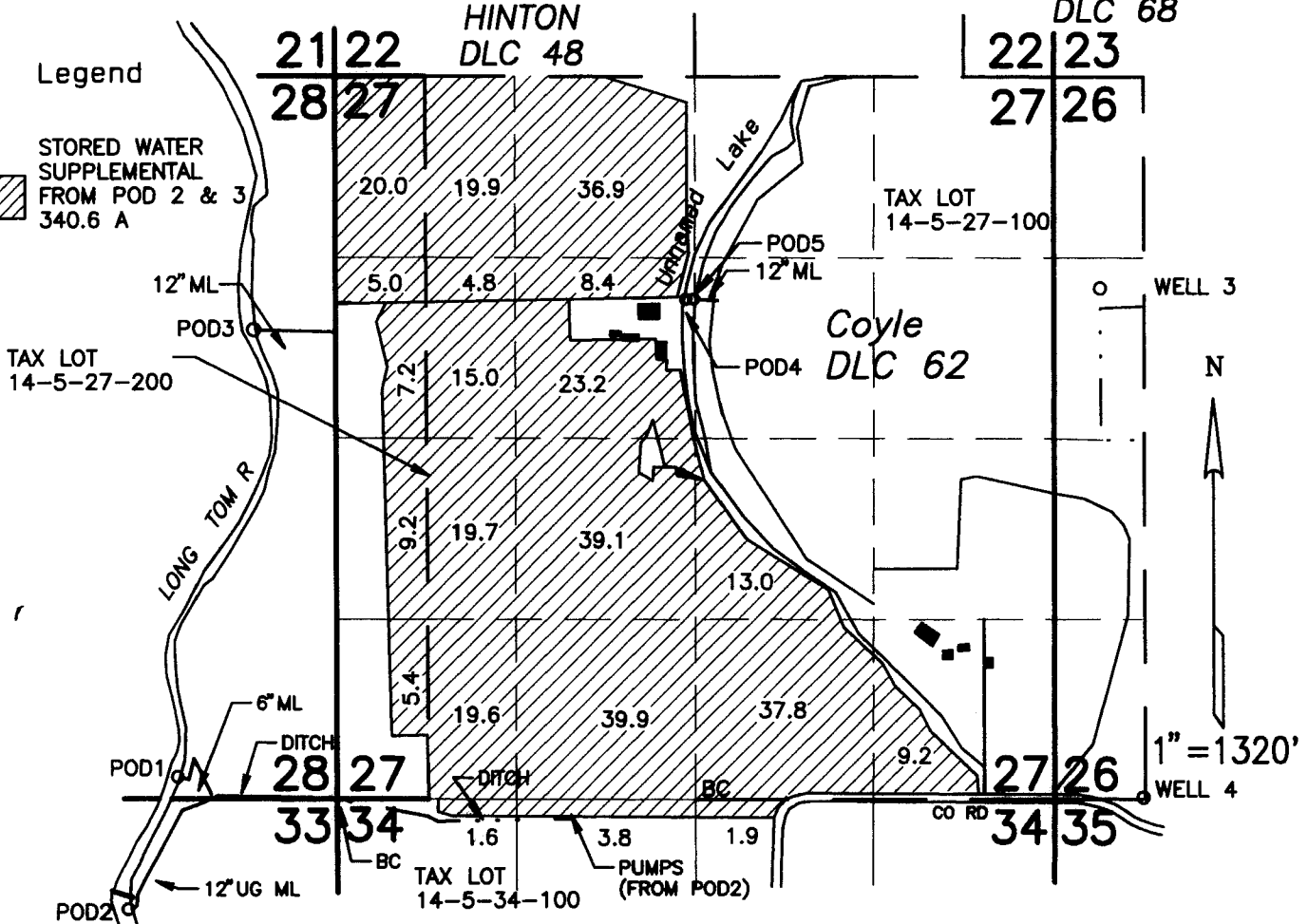
WATER RESOURCES DEPT.
SALEM, OREGON

T14S, R5W, W.M.

COFFEE
DLC 68

Legend

STORIED WATER
SUPPLEMENTAL
FROM POD 2 & 3
340.6 A



- POD 1, NORTH 160 FT & WEST 1140 FT FROM SW CORNER SEC 27 (NOT IN USE)
- POD 2, SOUTH 720 FT & WEST 1490 FT FROM SW CORNER SEC 27
- POD 3, SOUTH 1850 FT & WEST 600 FT FROM NW CORNER SEC 27
- POD 4, NORTH 3670 FT & WEST 2700 FT FROM SE CORNER SEC 27
- POD 5, NORTH 3670 FT & WEST 2650 FT FROM SE CORNER SEC 27

CLAIM OF BENEFICIAL USE MAP

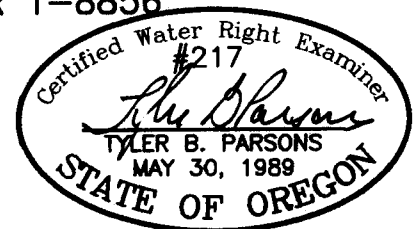
IN THE NAME OF
HUBBARD FARMS INC

APPLICATION S-71790 PERMIT 53304

TRANSFER T-8104 TRANSFER T-8856

Stored Surface Water

Prepared September 25, 2002
PARSONS SURVEYING
1915 S.E. Stone St.
Corvallis, OR 97333
(541) 752-7515
Project No. 0217



This map is for location of Water Right ONLY and does not constitute a boundary survey.

MAP 2 OF 3

EXP: 12/31/02

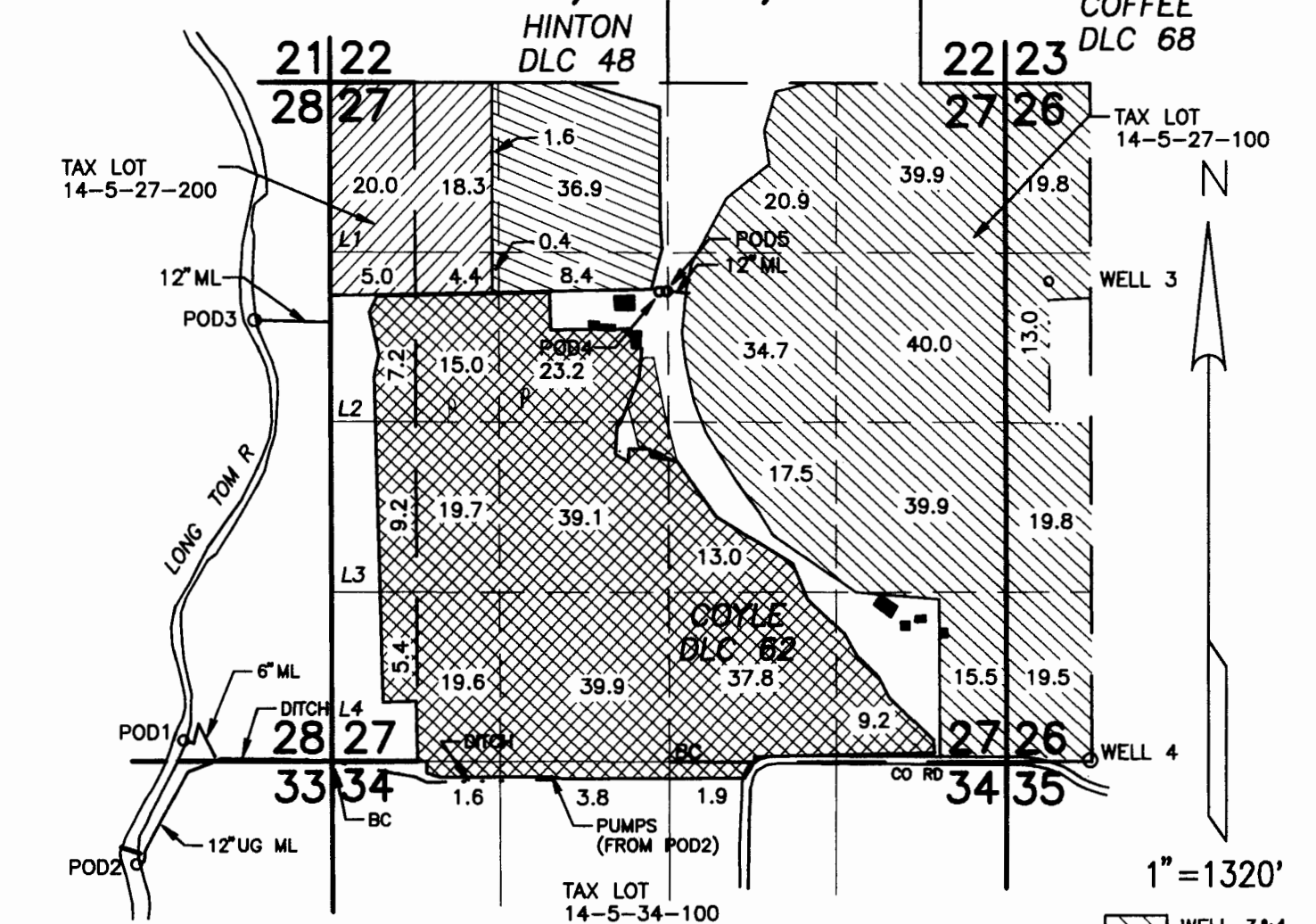
OCT 03 2002

WATER RESOURCES DEPT.
SALEM, OREGON





T14S, R5W, W.M.

COFFEE
DLC 68

HINTON
DLC 48



- POD 1, NORTH 160 FT & WEST 1140 FT FROM SW CORNER SEC 27 (NOT IN USE)
- POD 2, SOUTH 720 FT & WEST 1490 FT FROM SW CORNER SEC 27
- POD 3, SOUTH 1850 FT & WEST 600 FT FROM NW CORNER SEC 27
- POD 4, NORTH 3670 FT & WEST 2700 FT FROM SE CORNER SEC 27
- POD 5, NORTH 3670 FT & WEST 2650 FT FROM SE CORNER SEC 27
- WELL 3, SOUTH 1510 FT & EAST 240 FT FROM NE CORNER SEC 27
- WELL 4, NORTH 10 FT & WEST 12 FT FROM SE CORNER DLC 62

-  WELL 3&4
G-13284
280.5 AC
-  POD3
53304
47.7 AC
-  POD2
53304
245.6 AC
-  POD4
53304
47.3 AC

WATER USAGE SOURCES - 2002 CLAIM OF BENEFICIAL USE MAP

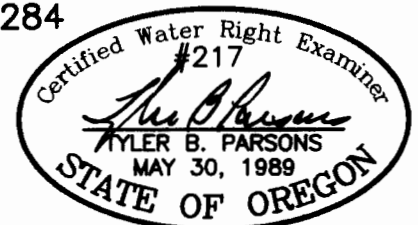
IN THE NAME OF
HUBBARD FARMS INC

APPLICATION S-71790 PERMIT 53304
APPLICATION G-12631 PERMIT G-13284
TRANSFER T-8104
TRANSFER T-8856

Prepared September 25, 2002
PARSONS SURVEYING
1915 S.E. Stone St.
Corvallis, OR 97333
(541) 752-7515
Project No. 0217

This map is for location of Water Right
ONLY and does not constitute a boundary survey.

MAP 3 OF 3



EXP: 12/31/2002