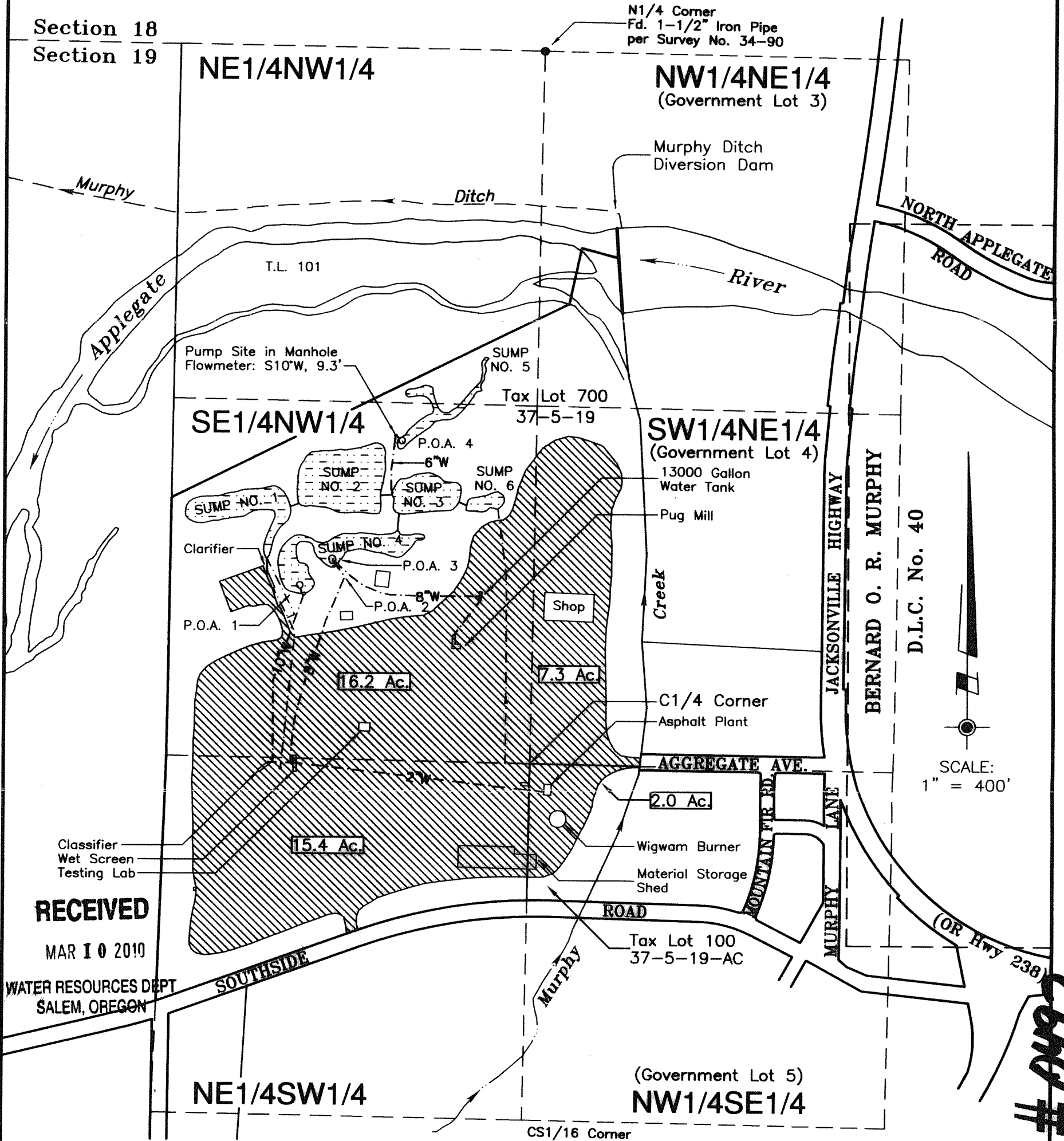


Section 19, T.37S., R.5W., W.M.

Section 18
Section 19



RECEIVED

MAR 10 2010

WATER RESOURCES DEPT
SALEM, OREGON

LEGEND:

Industrial Place of Use (40.9 Acres)
 15.4 Acres in NE1/4SW1/4
 2.0 Acres in NW1/4SE1/4
 7.3 Acres in SW1/4NE1/4
 16.2 Acres in SE1/4NW1/4

--- 24" Storm Drain return to Sumps 1 & 6
 - - - - - Approximate location of underground water line (size as shown)

Points of Appropriation

(from the N1/4 Corner of Section 19)

P.O.A. 1 = 1955 feet south and 880 feet west
 P.O.A. 2 = 1864 feet south and 761 feet west
 P.O.A. 3 = 1858 feet south and 763 feet west
 P.O.A. 4 = 1428 feet south and 512 feet west

Flow meter location by P.O.A.

P.O.A. 1: S11°E, 3.4' from SW pump house corner
 P.O.A. 2: S34°E, 4.4' from 40 horsepower pump
 P.O.A. 3: S43°E, 16.6' from 30 horsepower pump

A fourteen-page Site Report accompanies this plat.

This plat was prepared for the purpose of identifying the location of the water right only. There is no intent to provide dimensions or locations of property ownership lines.

SUBJECT PROPERTY: Tax Lot 700, Map No. 37-5-19 & Tax Lot 100, Map No. 37-5-19-AC

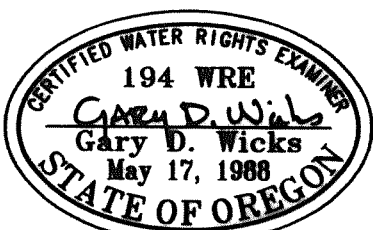
PROJECT NO.
280-93-207

DRAWING NO.
158-11.17

DATE
1-13-2010

SCALE
1" = 400'

SHEET NO.
1 OF 1



Renewal Date: 6-30-10

FINAL PROOF SURVEY PLAT FOR T-7100

LOCATED IN
 NE1/4SW1/4, E1/2NW1/4, W1/2NE1/4, NW1/4SE1/4
 Section 19, Township 37 South, Range 5 West, W.M.
 Josephine County, Oregon

PREPARED FOR:

COPELAND SAND AND GRAVEL, INC.
 P.O. Box 608
 Grants Pass, Oregon 97528
 Tel: 541-476-4441

PREPARED BY:

WICKS ENGINEERING & SURVEYING
 311 N. E. "D" Street
 Grants Pass, Oregon 97526
 Tel: 541-479-3436 Fax: 541-479-1014

COBU MAP # 0192