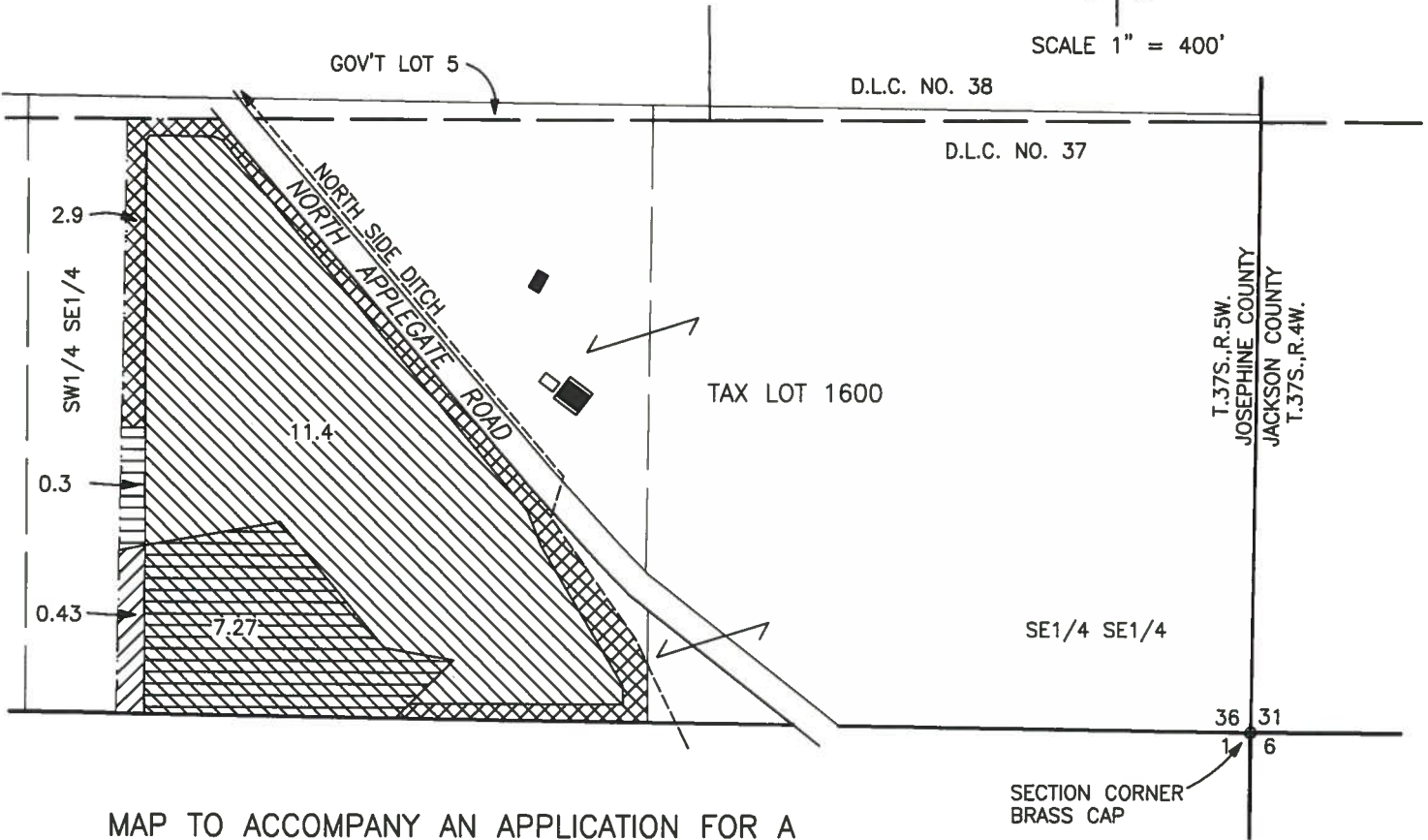


T.37S.,R.5W.,W.M.
 Josephine County, Oregon
 Tax Lot No. 37-5-36 - 1600
 ROGUE RIVER BASIN



SCALE 1" = 400'



MAP TO ACCOMPANY AN APPLICATION FOR A WATER RIGHT TRANSFER, CHANGE IN PLACE OF USE, THE FROM PROPERTY

MAP PREPARED FOR:
 PADRE PROPERTIES, LLC
 RICHARD M. BRADEN, MEMBER
 P.O. BOX 1032
 HUGHSON, CA. 95326

PREPARED BY:
 GARY D. KAISER, CWRE No.73
 19440 HWY. No. 62
 EAGLE POINT, OR. 97524

AUGUST 13, 2014

RECEIVED BY OWRD

NOV 04 2014

SALEM, OR

— — — — — = PROJECTED 40 LINES WITHIN BOUNDARIES OF D.L.C. NOS. 37 & 38

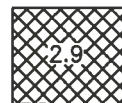
NOTES:
 MAP PREPARED FOR WATER RIGHTS PURPOSES ONLY, NOT FOR PROPERTY BOUNDARY LOCATION.



= NO CHANGE, CERT. 32830 PRIMARY, AND CERT. 44830 SUPPLEMENTAL



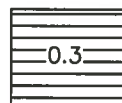
= NO CHANGE, CERT. 44830 PRIMARY



= PORTION OF CERT. 32830 PRIMARY AND CERT. 44830 SUPPLEMENTAL BEING TRANSFERRED TO 7.1 AC. UNIRRIGATED LAND ON TAX LOT 384W06-601 FOR STRIP IRRIGATION



= PORTION OF CERT. 44830 PRIMARY BEING TRANSFERRED TO 7.1 AC. UNIRRIGATED LAND ON TAX LOT 384W06-601 FOR STRIP IRRIGATION



= PORTION OF CERT. 32830 PRIMARY BEING TRANSFERRED TO 7.1 AC. UNIRRIGATED LAND ON TAX LOT 384W06-601 FOR STRIP IRRIGATION