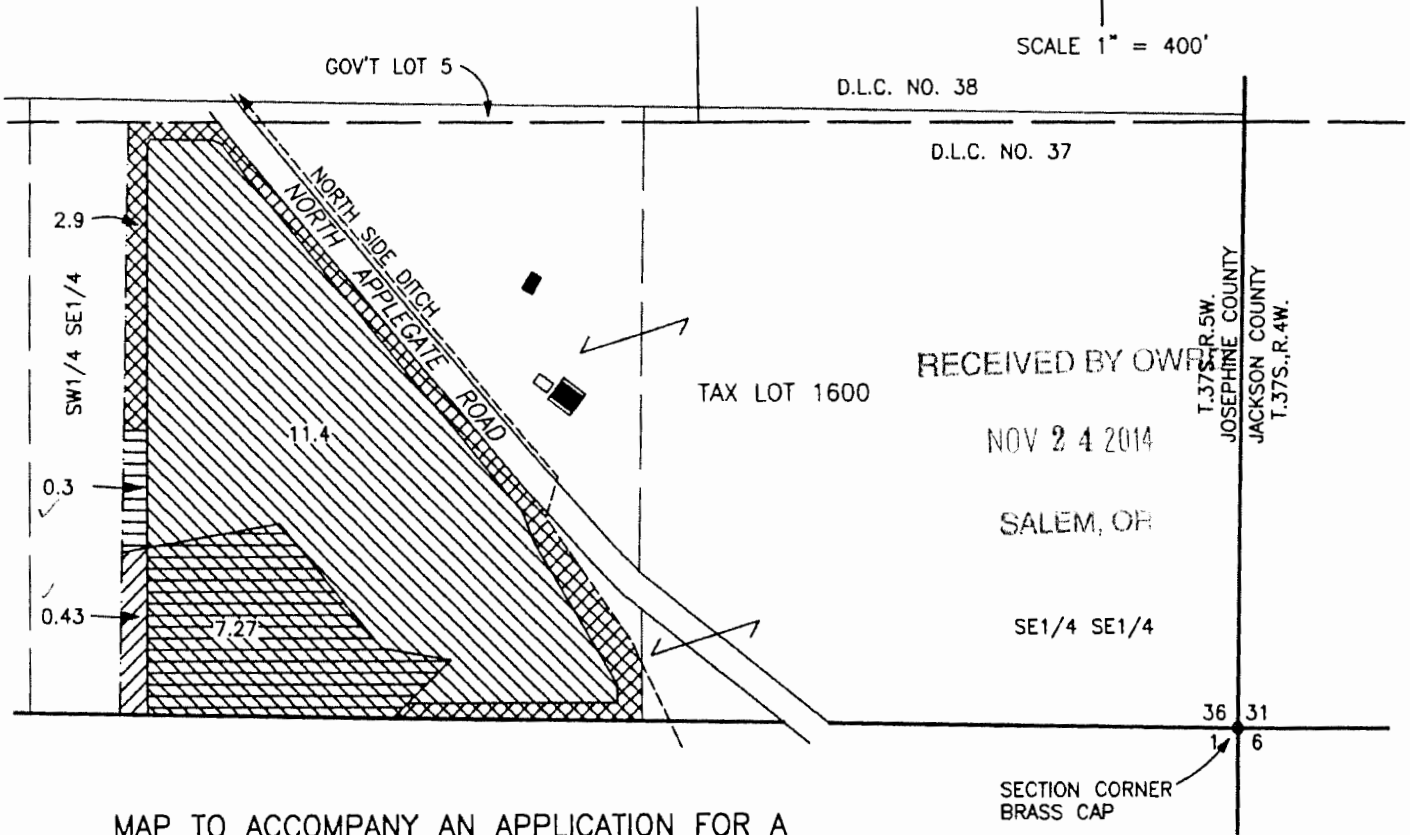


T.37S.,R.5W.,W.M.  
 Josephine County, Oregon  
 Tax Lot No. 37-5-36 - 1600  
 ROGUE RIVER BASIN



SCALE 1" = 400'



MAP TO ACCOMPANY AN APPLICATION FOR A WATER RIGHT TRANSFER, CHANGE IN PLACE OF USE, THE FROM PROPERTY

MAP PREPARED FOR:  
 PADRE PROPERTIES, LLC  
 RICHARD M. BRADEN, MEMBER  
 P.O. BOX 1032  
 HUGHSON, CA. 95326

PREPARED BY:  
 GARY D. KAISER, CWRE No.73  
 19440 HWY. No. 62  
 EAGLE POINT, OR. 97524

AUGUST 13, 2014

RECEIVED BY OWRD

NOV 04 2014

SALEM, OR

----- = PROJECTED 40 LINES  
 WITHIN BOUNDARIES OF  
 D.L.C. NOS. 37 & 38

NOTES:  
 MAP PREPARED FOR WATER RIGHTS  
 PURPOSES ONLY, NOT FOR PROPERTY  
 BOUNDARY LOCATION.



= NO CHANGE,  
 CERT. 32830 PRIMARY, AND  
 CERT. 44830 SUPPLEMENTAL



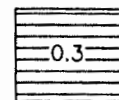
= NO CHANGE,  
 CERT. 44830 PRIMARY



= PORTION OF CERT. 32830  
 PRIMARY AND CERT. 44830  
 SUPPLEMENTAL BEING  
 TRANSFERRED TO 7.1 AC.  
 UNIRRIGATED LAND ON TAX LOT  
 384W06-601 FOR STRIP  
 IRRIGATION



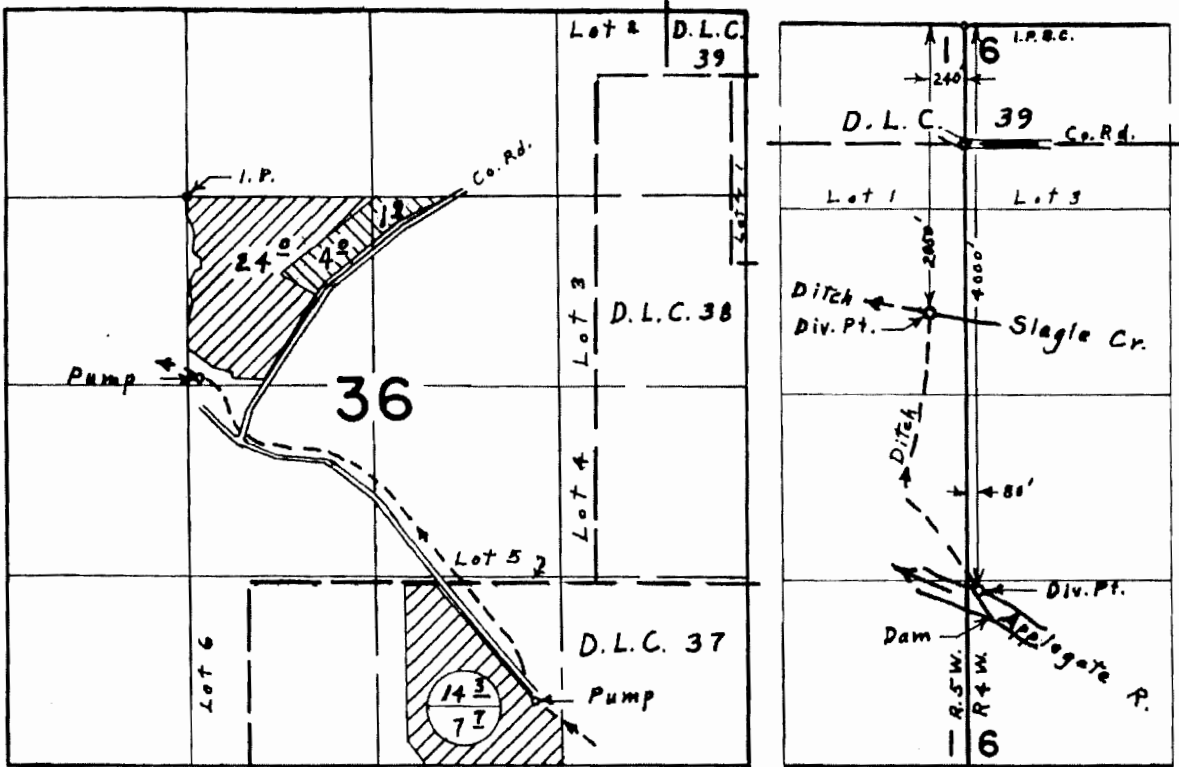
= PORTION OF CERT. 44830  
 PRIMARY BEING TRANSFERRED  
 TO 7.1 AC. UNIRRIGATED  
 LAND ON TAX LOT  
 384W06-601 FOR STRIP  
 IRRIGATION



= PORTION OF CERT. 32830  
 PRIMARY BEING TRANSFERRED  
 TO 7.1 AC. UNIRRIGATED  
 LAND ON TAX LOT  
 384W06-601 FOR STRIP  
 IRRIGATION

T.37S. R.5W. W.M.

T.38S. R.4&5W. W.M.



Primary  
Supplemental



**FINAL PROOF SURVEY**  
UNDER

RECEIVED BY OWE

NOV 24 2014

Application No. ~~42776~~ Permit No. ~~31281~~  
IN NAME OF

SALEM, OR

**NORTH SIDE APPLGATE RIVER DITCH CO., INC.**

Surveyed <sup>May 16 1975</sup> ~~Sept. 16 1974~~, by Larry M. Toll