

CLAIM OF BENEFICIAL USE

APPLICATION G-12660

PERMIT G-12993

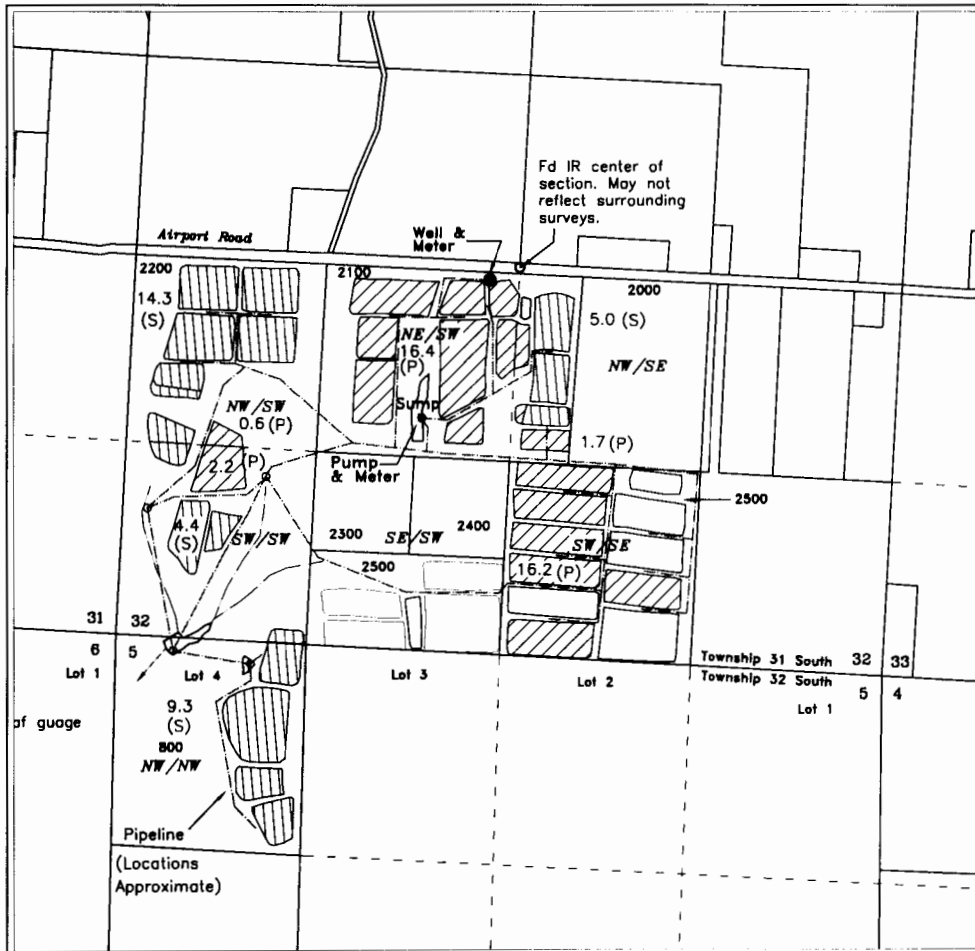
IN THE NAME OF BLANCO BOGS

SECTION 32, TOWNSHIP 31 SOUTH, RANGE 15 WEST, W.M.

AND

SECTION 5, TOWNSHIP 32 SOUTH, RANGE 15 WEST, W.M.

CURRY COUNTY OREGON



REVISION OF COBU MAP
SUBMITTED 9/25/2000
CORRECTING PLACE OF USE,
PRIMARY VS SUPPLEMENTAL
AND REDISCRPTION OF
POINTS OF DIVERSION

RECEIVED

MAY 10 2012

WATER RESOURCES CENTER
SALEM, OREGON

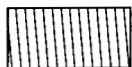


Scale
1 inch = 1320 feet

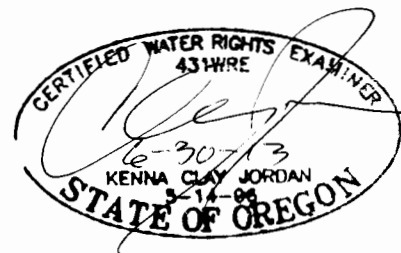
WELL - NE/SW, SECTION 32, 2560 FEET NORTH & 2430 FEET EAST
SUMP (Pump & Meter) - NE/SW, SECTION 32, 1600 FEET NORTH & 2015 FEET EAST
BOTH FROM THE SW CORNER OF SECTION 32



(P) Primary Cranberry Operations - 37.1 Acres



(S) Supplemental Cranberry Operations - 33.0 Acres



Base map from Curry County
GIS over 2005 FSA aerial photo
for assumed best fit and
adjusted to closely fit
previous COBU and Final Proof
Survey maps

JORDAN ENGINEERING
460 JORDAN LANE
ROSEBURG, OR 97471
(541) 673-1931

6/7/2011 n.e.d.
Revised 4/24/2012 n.e.d.
5-1-12 KCJ

This map is not intended to provide legal dimensions
or locations of property ownership lines