

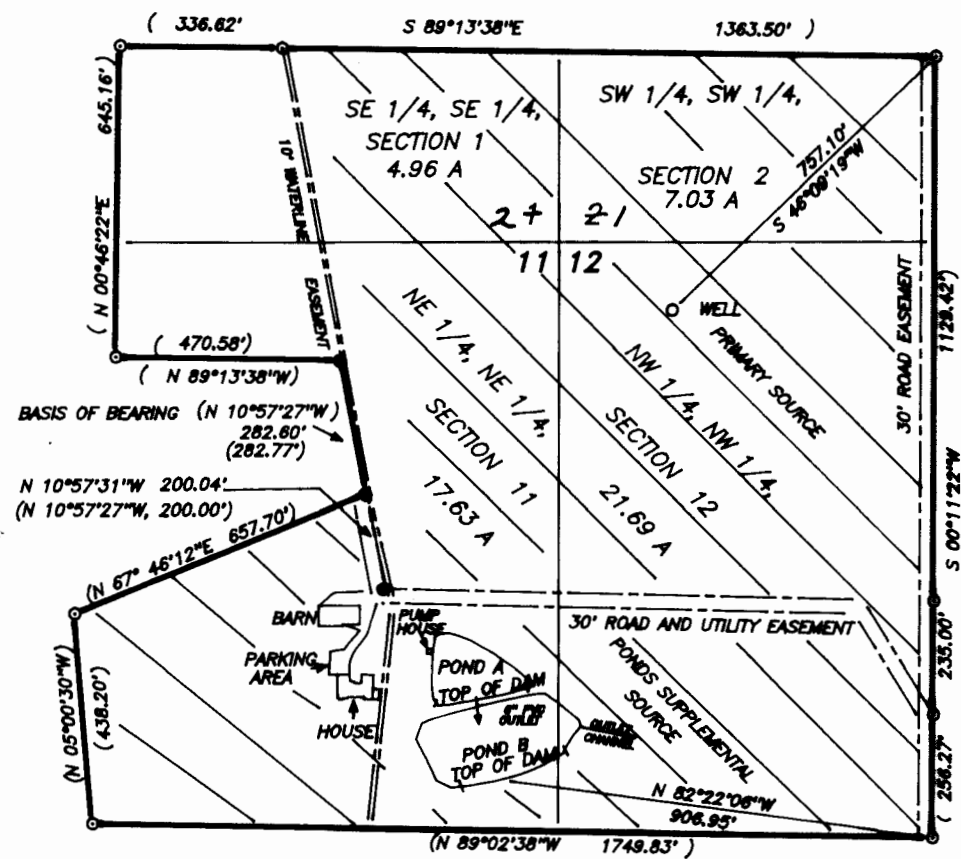
files G-14370; K-81403, 81462






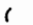

FINAL PROOF SURVEY
 FOR
MARVIN RAY STRAUGHAN
 TAX LOT 107
 SE 1/4, SE 1/4, SEC. 1; SW 1/4, SW 1/4, SEC. 2;
 NE 1/4, NE 1/4, SEC. 11; NW 1/4, NW 1/4, SEC. 12
 T.9 S.; R.5 W.; W.M.
 POLK COUNTY, OREGON
 JULY 17, 2002

RECEIVED
 AUG 05 2002
 WATER RESOURCES DEPT
 SALEM, OREGON

THIS MAP IS FOR THE PURPOSE OF
 OBTAINING A WATER RIGHT AND IS
 NOT INTENDED TO PROVIDE LEGAL
 DIMENSIONS FOR LOCATION OF
 PROPERTY BOUNDARIES.



LEGEND

-  AREA TO BE IRRIGATED
-  MONUMENT FOUND AND TIED
5/8" IRON ROD WITH PLASTIC
CAP MARKED "LS 1628"
-  MONUMENT BASED ON C.S.11542A
-  RECORD DATA
-  EASEMENTS OF RECORD
- SCALE 1 INCH = 400 FEET

SURVEYED BY:
 L. W. HUNNEMULLER
 3055 N. E. LANCASTER
 CORVALLIS, OR 97330
 PHONE: (541) 757-7614

DAM:

	POND A	POND B	TOTAL
MAXIMUM HEIGHT	8 FEET	8 FEET	
TOP WIDTH	8 FEET	8 FEET	
AREA OF POND	0.48 ACRE	1.08 ACRES	1.52 ACRES
MAXIMUM DEPTH	9 FEET	8 FEET	
STORAGE CAPACITY	1.88 A.F.	3.34 A.F.	5.00 ACRE FEET

TOTAL ACREAGE TO BE IRRIGATED 51.31 ACRES



This map has been updated to reflect the correct sections. MB/12-31-14