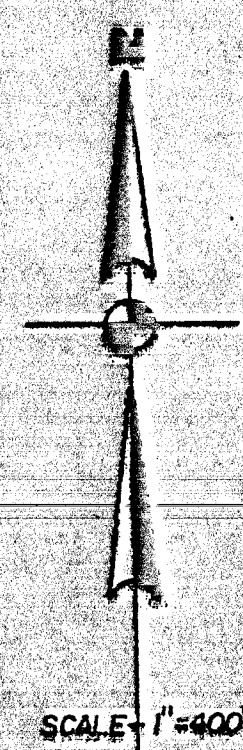


T.3S, R.1E, W.M.

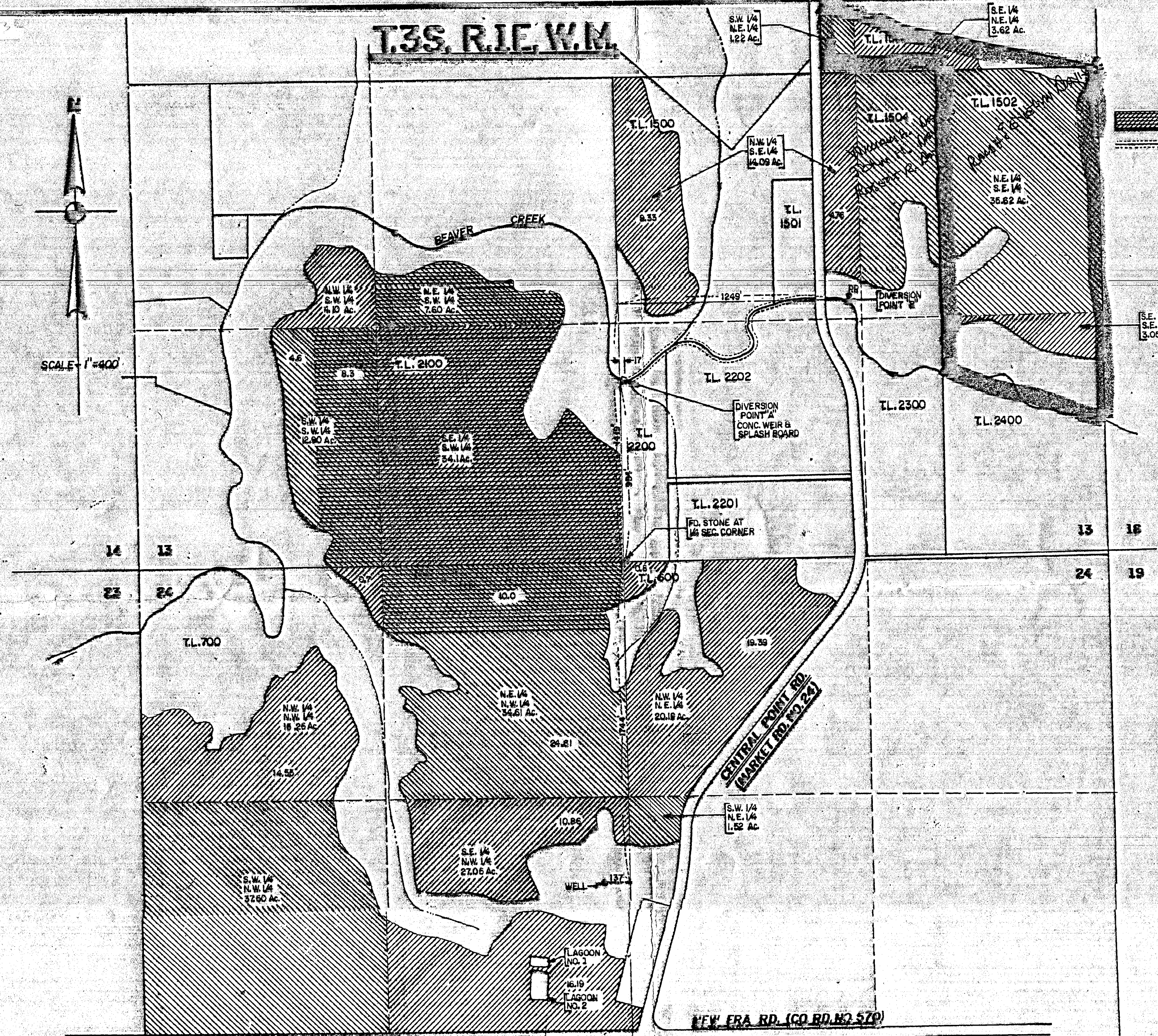


SCALE 1"=400'

**LEGEND**

PERMIT NO. 11975 NOV. 27, 1935

INTERMITTENT IMPOUNDMENT



**SECTION 13, T.3S, R.1E, W.M.**

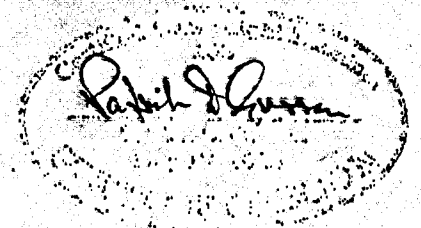
S.E. 1/4 - N.E. 1/4	3.62 Ac.
S.W. 1/4 - N.E. 1/4	1.22 Ac.
N.W. 1/4 - S.W. 1/4	4.10 Ac.
N.W. 1/4 - S.E. 1/4	14.09 Ac.
N.E. 1/4 - S.E. 1/4	35.62 Ac.
S.E. 1/4 - S.E. 1/4	3.05 Ac.
S.W. 1/4 - S.W. 1/4	4.60 Ac.
<b>SUB TOTAL</b>	<b>66.30 Ac.</b>

**SECTION 24, T.3S, R.1E, W.M.**

N.W. 1/4 - N.E. 1/4	20.19 Ac.
N.E. 1/4 - N.W. 1/4	24.61 Ac.
N.W. 1/4 - N.W. 1/4	15.25 Ac.
S.W. 1/4 - N.W. 1/4	37.50 Ac.
S.E. 1/4 - N.W. 1/4	27.05 Ac.
S.W. 1/4 - N.E. 1/4	1.52 Ac.
<b>SUB TOTAL</b>	<b>126.12 Ac.</b>

TOTAL AREA 192.42 Ac.

REVIEWED AND VERIFIED SEPTEMBER 13, 1999



**ZAROSINSKI-TATONE ENGINEERS, INC.**  
3737 S. E. EIGHTH AVE. PORTLAND, ORE. 97202  
PH: (503) 235-8795

**STAEHEL Y BRO'S DAIRY**

SURFACE WATER, GROUND WATER AND RESERVOIR APPLICATION MAP

1592-1

DRAWN: R.R. CHECKED: R.G.T.  
SCALE: 1"=400' DATE: 8-16-90

RECEIVED  
SEP 24 1999  
WATER RESOURCES DEPT.  
SALEM, OREGON