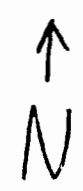


1' = 660'
 39 S 2W
 Section 6
 Tax Lot 1600

"Upper Pond"
 2500' NORTH
 2000' WEST
 of
 SE corner of
 section 6,
 39 S, 2W

SE
 corner of
 section 6,
 39 S, 2W



UPPER POND
 7

RECEIVED BY OWRD
 AUG 23 2013
 SALEM, OR

RECEIVED
 JUN - 2 2003
 WATER RESOURCES DEPT
 SALEM, OREGON

FR-160

app no R-85628 permit no R-12749