

1" = 660'

39S 2W  
Section 6  
Tax Lot 1600

**RECEIVED**  
JUN - 2 2003  
WATER RESOURCES DEPT  
SALEM, OREGON

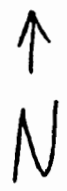
"LOWER POND"

200' NORTH, 1500'  
WEST of  
S.E. corner of  
Section 6,  
39S 2W

RECEIVED BY OWRD

AUG 23 2013

SALEM, OR



7

**FR-160**

app # R-85629 permit no. R-13750