

RECEIVED

AUG 25 1997

WATER RESOURCES DEPT.  
SALEM, OREGON

SEE MAP 39 19

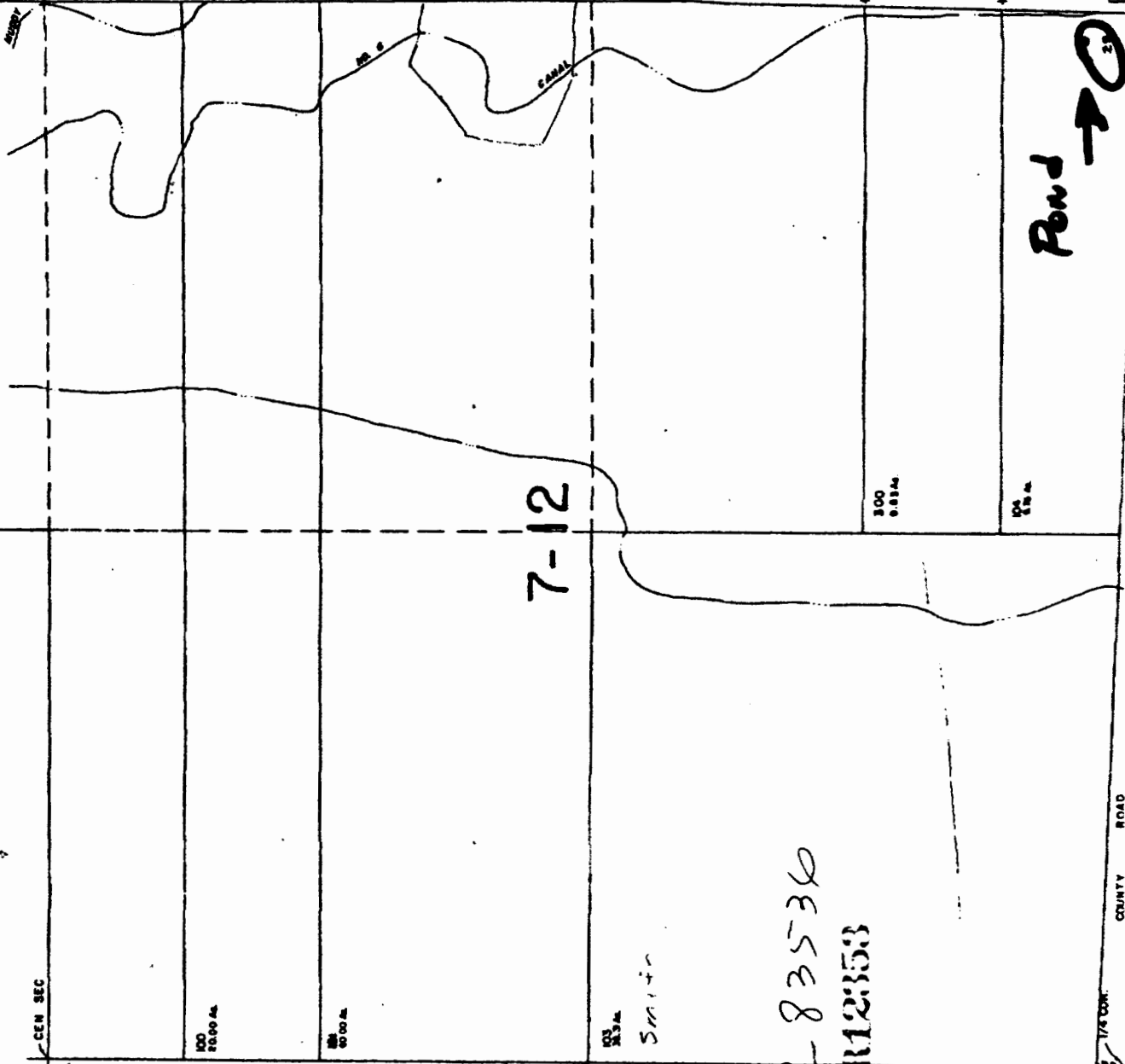
SECTION 12-7

28

CANCELLED NUMBERS  
800

1/4 COR

CRREE



LANE UNIT 11

SEE MAP 39 19

7-12

Pond →

COUNTY ROAD

1/4 COR

Smith

Application No. R-83536  
Permit No. R12353

RECEIVED BY OWRD

SALEM, OR

OCT 14 2014

SEE MAP 39 19



114200